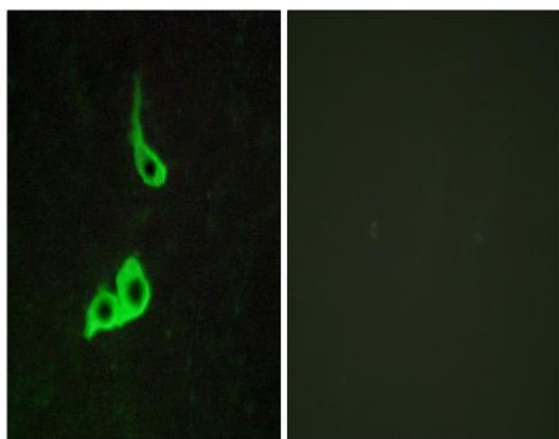


GPR153 Polyclonal Antibody

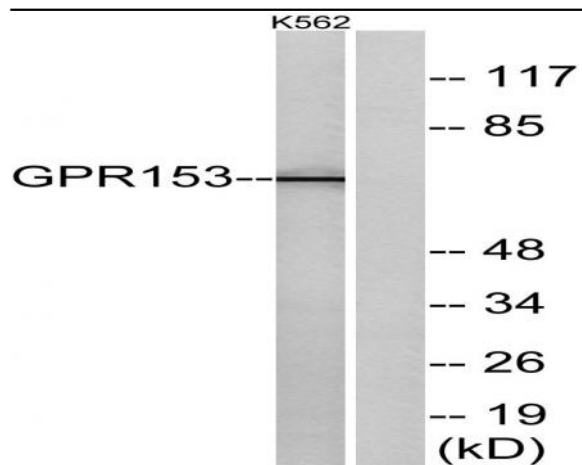
Catalog No :	YT1981
Reactivity :	Human;Mouse;Rat
Applications :	WB;IHC;IF;ELISA
Target :	GPR153
Gene Name :	GPR153
Protein Name :	Probable G-protein coupled receptor 153
Human Gene Id :	387509
Human Swiss Prot No :	Q6NV75
Mouse Gene Id :	100129
Mouse Swiss Prot No :	Q8K0Z9
Immunogen :	The antiserum was produced against synthesized peptide derived from human GPR153. AA range:195-244
Specificity :	GPR153 Polyclonal Antibody detects endogenous levels of GPR153 protein.
Formulation :	Liquid in PBS containing 50% glycerol, 0.5% BSA and 0.02% sodium azide.
Source :	Polyclonal, Rabbit,IgG
Dilution :	WB 1:500 - 1:2000. IHC 1:100 - 1:300. IF 1:200 - 1:1000. ELISA: 1:10000. Not yet tested in other applications.
Purification :	The antibody was affinity-purified from rabbit antiserum by affinity-chromatography using epitope-specific immunogen.
Concentration :	1 mg/ml
Storage Stability :	-15°C to -25°C/1 year(Do not lower than -25°C)

Observed Band :	65kD
Background :	function:Orphan receptor.,similarity:Belongs to the G-protein coupled receptor 1 family.,
Function :	function:Orphan receptor.,similarity:Belongs to the G-protein coupled receptor 1 family.,
Subcellular Location :	Cell membrane; Multi-pass membrane protein.
Expression :	Brain,Melanoma,
Sort :	7015
No4 :	1
Host :	Rabbit
Modifications :	Unmodified

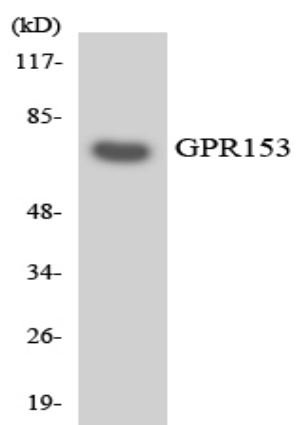
Products Images



Immunofluorescence analysis of LOVO cells, using GPR153 Antibody. The picture on the right is blocked with the synthesized peptide.



Western blot analysis of lysates from K562 cells, using GPR153 Antibody. The lane on the right is blocked with the synthesized peptide.



Western blot analysis of the lysates from HepG2 cells using GPR153 antibody.