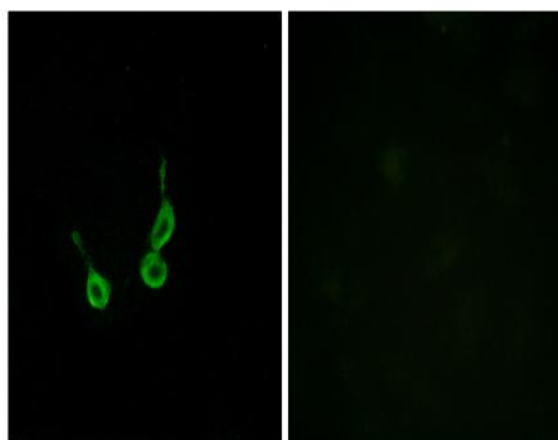


GPR150 Polyclonal Antibody

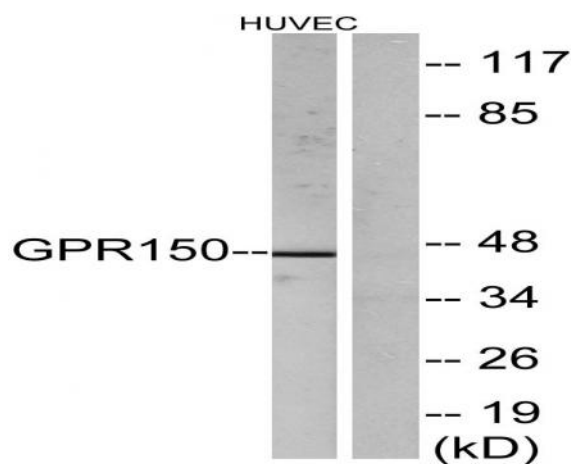
| | |
|------------------------------|---|
| Catalog No : | YT1980 |
| Reactivity : | Human;Rat;Mouse; |
| Applications : | WB;IF;ELISA |
| Target : | GPR150 |
| Gene Name : | GPR150 |
| Protein Name : | Probable G-protein coupled receptor 150 |
| Human Gene Id : | 285601 |
| Human Swiss Prot No : | Q8NGU9 |
| Mouse Swiss Prot No : | Q8BL07 |
| Immunogen : | The antiserum was produced against synthesized peptide derived from human GPR150. AA range:361-410 |
| Specificity : | GPR150 Polyclonal Antibody detects endogenous levels of GPR150 protein. |
| Formulation : | Liquid in PBS containing 50% glycerol, 0.5% BSA and 0.02% sodium azide. |
| Source : | Polyclonal, Rabbit,IgG |
| Dilution : | WB 1:500 - 1:2000. IF 1:200 - 1:1000. ELISA: 1:10000. Not yet tested in other applications. |
| Purification : | The antibody was affinity-purified from rabbit antiserum by affinity-chromatography using epitope-specific immunogen. |
| Concentration : | 1 mg/ml |
| Storage Stability : | -15°C to -25°C/1 year(Do not lower than -25°C) |
| Observed Band : | 46kD |

| | |
|-------------------------------|---|
| Background : | function:Orphan receptor.,similarity:Belongs to the G-protein coupled receptor 1 family., |
| Function : | function:Orphan receptor.,similarity:Belongs to the G-protein coupled receptor 1 family., |
| Subcellular Location : | Cell membrane; Multi-pass membrane protein. |
| Expression : | Brain, |
| Sort : | 7008 |
| No4 : | 1 |
| Host : | Rabbit |
| Modifications : | Unmodified |

Products Images



Immunofluorescence analysis of HepG2 cells, using GPR150 Antibody. The picture on the right is blocked with the synthesized peptide.



Western blot analysis of lysates from HUVEC cells, using GPR150 Antibody. The lane on the right is blocked with the synthesized peptide.