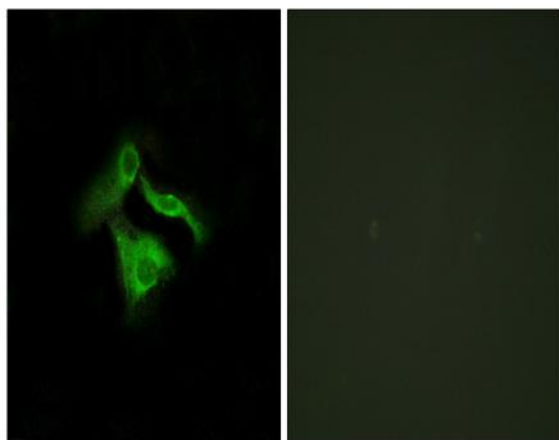


GPR149 Polyclonal Antibody

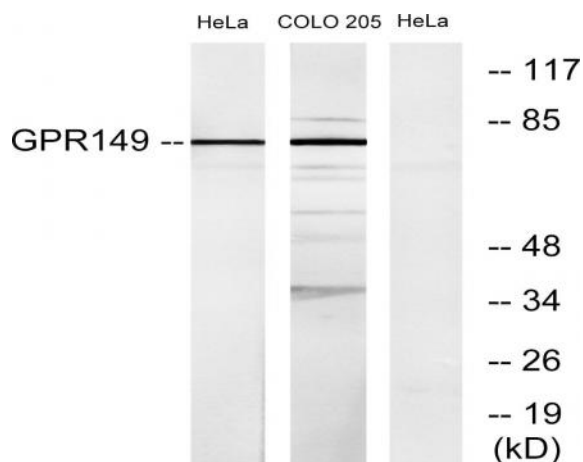
Catalog No :	YT1977
Reactivity :	Human;Rat;Mouse;
Applications :	WB;IHC;IF;ELISA
Target :	GPR149
Gene Name :	GPR149
Protein Name :	Probable G-protein coupled receptor 149
Human Gene Id :	344758
Human Swiss Prot No :	Q86SP6
Mouse Swiss Prot No :	Q3UVY1
Immunogen :	The antiserum was produced against synthesized peptide derived from human GPR149. AA range:451-500
Specificity :	GPR149 Polyclonal Antibody detects endogenous levels of GPR149 protein.
Formulation :	Liquid in PBS containing 50% glycerol, 0.5% BSA and 0.02% sodium azide.
Source :	Polyclonal, Rabbit,IgG
Dilution :	WB 1:500 - 1:2000. IHC 1:100 - 1:300. IF 1:200 - 1:1000. ELISA: 1:5000. Not yet tested in other applications.
Purification :	The antibody was affinity-purified from rabbit antiserum by affinity-chromatography using epitope-specific immunogen.
Concentration :	1 mg/ml
Storage Stability :	-15°C to -25°C/1 year(Do not lower than -25°C)
Observed Band :	81kD

Background :	function:Orphan receptor.,similarity:Belongs to the G-protein coupled receptor 1 family.,
Function :	function:Orphan receptor.,similarity:Belongs to the G-protein coupled receptor 1 family.,
Subcellular Location :	Cell membrane; Multi-pass membrane protein.
Expression :	Brain,
Sort :	7006
No4 :	1
Host :	Rabbit
Modifications :	Unmodified

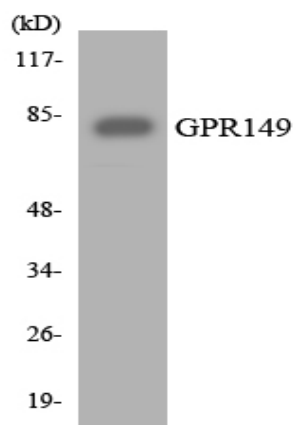
Products Images



Immunofluorescence analysis of HeLa cells, using GPR149 Antibody. The picture on the right is blocked with the synthesized peptide.



Western blot analysis of lysates from HeLa and COLO205 cells, using GPR149 Antibody. The lane on the right is blocked with the synthesized peptide.



Western blot analysis of the lysates from 293 cells using GPR149 antibody.