

Fibulin-3 Polyclonal Antibody

Catalog No :	YT1708
Reactivity :	Human;Mouse;Rat
Applications :	WB;IHC;IF;ELISA
Target :	Fibulin-3
Gene Name :	EFEMP1
Protein Name :	EGF-containing fibulin-like extracellular matrix protein 1
Human Gene Id :	2202
Human Swiss Prot No :	Q12805
Mouse Gene Id :	216616
Mouse Swiss Prot No :	Q8BPB5
Rat Swiss Prot No :	O35568
Immunogen :	The antiserum was produced against synthesized peptide derived from human EFEMP1. AA range:111-160
Specificity :	Fibulin-3 Polyclonal Antibody detects endogenous levels of Fibulin-3 protein.
Formulation :	Liquid in PBS containing 50% glycerol, 0.5% BSA and 0.02% sodium azide.
Source :	Polyclonal, Rabbit,IgG
Dilution :	WB 1:500 - 1:2000. IHC 1:100 - 1:300. ELISA: 1:10000.. IF 1:50-200
Purification :	The antibody was affinity-purified from rabbit antiserum by affinity-chromatography using epitope-specific immunogen.
Concentration :	1 mg/ml

Storage Stability : -15°C to -25°C/1 year(Do not lower than -25°C)

Observed Band : 55kD

Background : This gene encodes a member of the fibulin family of extracellular matrix glycoproteins. Like all members of this family, the encoded protein contains tandemly repeated epidermal growth factor-like repeats followed by a C-terminus fibulin-type domain. This gene is upregulated in malignant gliomas and may play a role in the aggressive nature of these tumors. Mutations in this gene are associated with Doyme honeycomb retinal dystrophy. Alternatively spliced transcript variants that encode the same protein have been described.[provided by RefSeq, Nov 2009],

Function : alternative products:Experimental confirmation may be lacking for some isoforms,disease:Defects in EFEMP1 are a cause of Doyme honeycomb retinal dystrophy (DHRD) [MIM:126600]; also known as malattia leventinese (MLVT OR ML). DHRD is an autosomal dominant disease characterized by yellow-white deposits known as drusen that accumulate beneath the retinal pigment epithelium.,online information:Retina International's Scientific Newsletter,similarity:Belongs to the fibulin family.,similarity:Contains 6 EGF-like domains.,

Subcellular Location : Secreted, extracellular space . Secreted, extracellular space, extracellular matrix . Localizes to the lamina propria underneath the olfactory epithelium. .

Expression : In the eye, associated with photoreceptor outer and inner segment regions, the nerve fiber layer, outer nuclear layer and inner and outer plexiform layers of the retina.

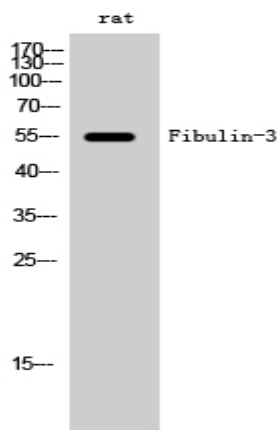
Sort : 6055

No4 : 1

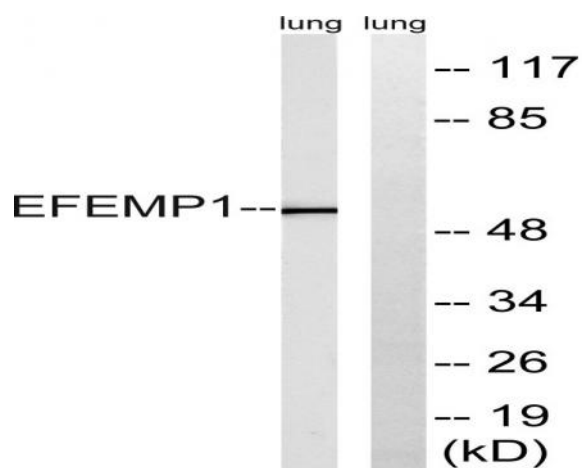
Host : Rabbit

Modifications : Unmodified

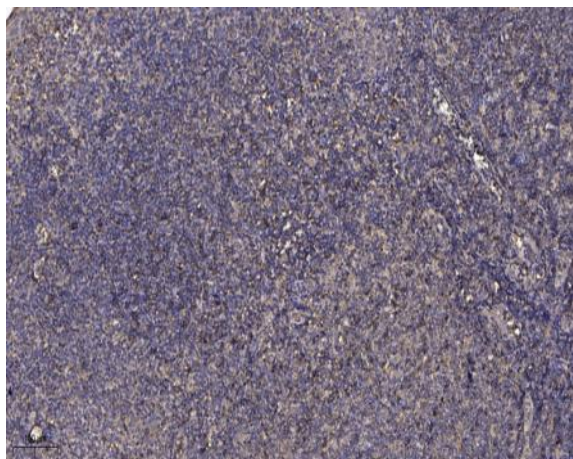
Products Images



Western Blot analysis of rat cells using Fibulin-3 Polyclonal Antibody



Western blot analysis of lysates from rat lung, using EFEMP1 Antibody. The lane on the right is blocked with the synthesized peptide.



Immunohistochemical analysis of paraffin-embedded human tonsil. 1, Antibody was diluted at 1:200(4° overnight). 2, Tris-EDTA,pH9.0 was used for antigen retrieval. 3,Secondary antibody was diluted at 1:200(room temperature, 30min).