

**Fibulin-2 Polyclonal Antibody**

<b>Catalog No :</b>	YT1707
<b>Reactivity :</b>	Human;Mouse
<b>Applications :</b>	WB;IHC;IF;ELISA
<b>Target :</b>	Fibulin-2
<b>Gene Name :</b>	FBLN2
<b>Protein Name :</b>	Fibulin-2
<b>Human Gene Id :</b>	2199
<b>Human Swiss Prot No :</b>	P98095
<b>Mouse Swiss Prot No :</b>	P37889
<b>Immunogen :</b>	The antiserum was produced against synthesized peptide derived from human FBLN2. AA range:241-290
<b>Specificity :</b>	Fibulin-2 Polyclonal Antibody detects endogenous levels of Fibulin-2 protein.
<b>Formulation :</b>	Liquid in PBS containing 50% glycerol, 0.5% BSA and 0.02% sodium azide.
<b>Source :</b>	Polyclonal, Rabbit,IgG
<b>Dilution :</b>	WB 1:500 - 1:2000. IHC 1:100 - 1:300. IF 1:200 - 1:1000. ELISA: 1:40000. Not yet tested in other applications.
<b>Purification :</b>	The antibody was affinity-purified from rabbit antiserum by affinity-chromatography using epitope-specific immunogen.
<b>Concentration :</b>	1 mg/ml
<b>Storage Stability :</b>	-15°C to -25°C/1 year(Do not lower than -25°C)
<b>Observed Band :</b>	130kD

**Background :** This gene encodes an extracellular matrix protein, which belongs to the fibulin family. This protein binds various extracellular ligands and calcium. It may play a role during organ development, in particular, during the differentiation of heart, skeletal and neuronal structures. Alternatively spliced transcript variants encoding different isoforms have been identified. [provided by RefSeq, Jul 2008],

**Function :** developmental stage:Widely expressed during embryonic development. Primarily detected within the neuropithelium, spinal ganglia and peripheral nerves.,function:Its binding to fibronectin and some other ligands is calcium dependent.,similarity:Belongs to the fibulin family.,similarity:Contains 11 EGF-like domains.,similarity:Contains 3 anaphylatoxin-like domains.,subunit:Homotrimer; disulfide-linked. Interacts with LAMA2.,tissue specificity:Component of both basement membranes and other connective tissues. Expressed in heart, placenta and ovary.,

**Subcellular Location :** Secreted, extracellular space, extracellular matrix.

**Expression :** Component of both basement membranes and other connective tissues. Expressed in heart, placenta and ovary.

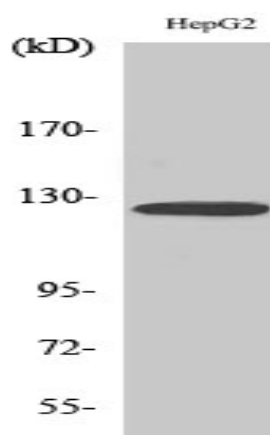
**Sort :** 6054

**No4 :** 1

**Host :** Rabbit

**Modifications :** Unmodified

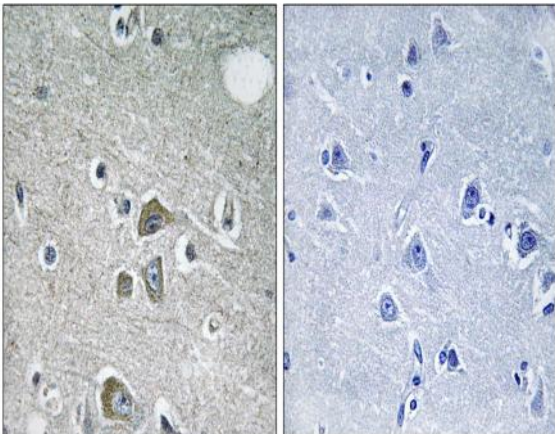
## Products Images



Western Blot analysis of various cells using Fibulin-2 Polyclonal Antibody diluted at 1:500



Immunofluorescence analysis of A549 cells, using FBLN2 Antibody. The picture on the right is blocked with the synthesized peptide.



Immunohistochemistry analysis of paraffin-embedded human brain tissue, using FBLN2 Antibody. The picture on the right is blocked with the synthesized peptide.