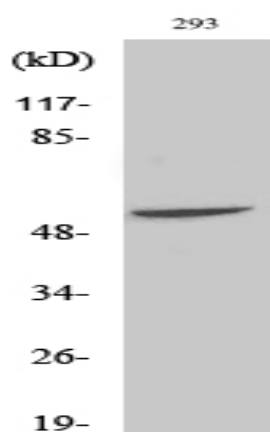


Fgl2 Polyclonal Antibody

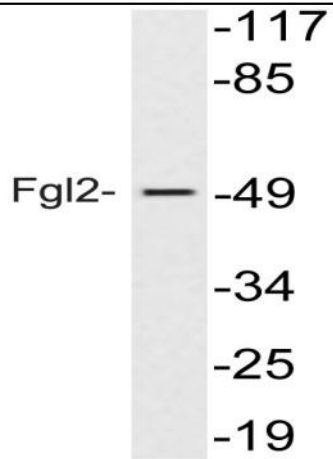
Catalog No :	YT1703
Reactivity :	Human;Mouse
Applications :	WB;ELISA
Target :	Fgl2
Gene Name :	FGL2
Protein Name :	Fibroleukin
Human Gene Id :	10875
Human Swiss Prot No :	Q14314
Mouse Swiss Prot No :	P12804
Immunogen :	The antiserum was produced against synthesized peptide derived from human Fgl2. AA range:38-87
Specificity :	Fgl2 Polyclonal Antibody detects endogenous levels of Fgl2 protein.
Formulation :	Liquid in PBS containing 50% glycerol, 0.5% BSA and 0.02% sodium azide.
Source :	Polyclonal, Rabbit,IgG
Dilution :	WB 1:500 - 1:2000. ELISA: 1:10000. Not yet tested in other applications.
Purification :	The antibody was affinity-purified from rabbit antiserum by affinity-chromatography using epitope-specific immunogen.
Concentration :	1 mg/ml
Storage Stability :	-15°C to -25°C/1 year(Do not lower than -25°C)
Observed Band :	55kD

Background :	fibrinogen like 2(FGL2) Homo sapiens The protein encoded by this gene is a secreted protein that is similar to the beta- and gamma-chains of fibrinogen. The carboxyl-terminus of the encoded protein consists of the fibrinogen-related domains (FRED). The encoded protein forms a tetrameric complex which is stabilized by interchain disulfide bonds. This protein may play a role in physiologic functions at mucosal sites. [provided by RefSeq, Jul 2008],
Function :	function:May play a role in physiologic lymphocyte functions at mucosal sites.,similarity:Contains 1 fibrinogen C-terminal domain.,subunit:Homotetramer; disulfide-linked.,tissue specificity:Constitutively expressed in cytotoxic T-cells.,
Subcellular Location :	Secreted.
Expression :	Constitutively expressed in cytotoxic T-cells.
Tag :	orthogonal
Sort :	6037
No4 :	1
Host :	Rabbit
Modifications :	Unmodified

Products Images



Western Blot analysis of various cells using Fgl2 Polyclonal Antibody



Western blot analysis of lysate from 293 cells treated with insulin, using Fgl2 antibody.