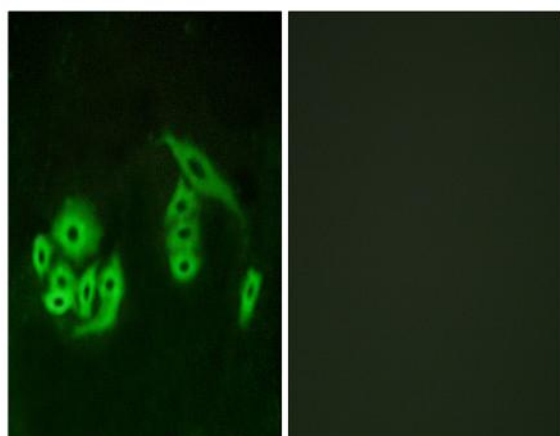


GPR12 Polyclonal Antibody

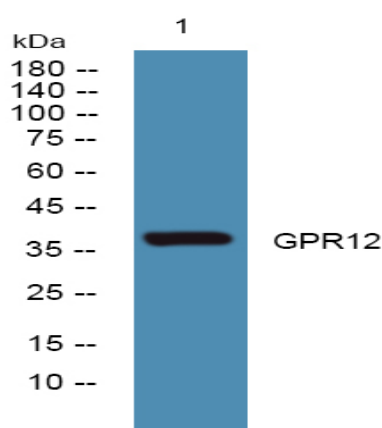
Catalog No :	YT1963
Reactivity :	Human;Rat;Mouse;
Applications :	WB;IF;ELISA
Target :	GPR12
Gene Name :	GPR12
Protein Name :	G-protein coupled receptor 12
Human Gene Id :	2835
Human Swiss Prot No :	P47775
Mouse Swiss Prot No :	P35412
Immunogen :	The antiserum was produced against synthesized peptide derived from human GPR12. AA range:1-50
Specificity :	GPR12 Polyclonal Antibody detects endogenous levels of GPR12 protein.
Formulation :	Liquid in PBS containing 50% glycerol, 0.5% BSA and 0.02% sodium azide.
Source :	Polyclonal, Rabbit,IgG
Dilution :	WB 1:500 - 1:2000. IF 1:200 - 1:1000. ELISA: 1:5000. Not yet tested in other applications.
Purification :	The antibody was affinity-purified from rabbit antiserum by affinity-chromatography using epitope-specific immunogen.
Concentration :	1 mg/ml
Storage Stability :	-15°C to -25°C/1 year(Do not lower than -25°C)
Observed Band :	37kD

Background :	function:Orphan receptor.,similarity:Belongs to the G-protein coupled receptor 1 family.,
Function :	function:Orphan receptor.,similarity:Belongs to the G-protein coupled receptor 1 family.,
Subcellular Location :	Cell membrane ; Multi-pass membrane protein .
Expression :	Brain,Brain cortex,PCR rescued clones,Thalamus,
Sort :	6992
No4 :	1

Products Images



Immunofluorescence analysis of A549 cells, using GPR12 Antibody. The picture on the right is blocked with the synthesized peptide.



Western blot analysis of lysates from PC12 cells, primary antibody was diluted at 1:1000, 4° over night