

**FGF-13 Polyclonal Antibody**

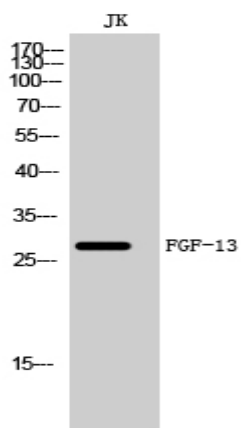
<b>Catalog No :</b>	YT1696
<b>Reactivity :</b>	Human;Mouse;Rat
<b>Applications :</b>	WB;ELISA
<b>Target :</b>	FGF-13
<b>Gene Name :</b>	FGF13
<b>Protein Name :</b>	Fibroblast growth factor 13
<b>Human Gene Id :</b>	2258
<b>Human Swiss Prot No :</b>	Q92913
<b>Mouse Gene Id :</b>	14168
<b>Mouse Swiss Prot No :</b>	P70377
<b>Rat Gene Id :</b>	84488
<b>Rat Swiss Prot No :</b>	Q9ERW3
<b>Immunogen :</b>	The antiserum was produced against synthesized peptide derived from human FGF13. AA range:154-203
<b>Specificity :</b>	FGF-13 Polyclonal Antibody detects endogenous levels of FGF-13 protein.
<b>Formulation :</b>	Liquid in PBS containing 50% glycerol, 0.5% BSA and 0.02% sodium azide.
<b>Source :</b>	Polyclonal, Rabbit,IgG
<b>Dilution :</b>	WB 1:500 - 1:2000. ELISA: 1:5000. Not yet tested in other applications.
<b>Purification :</b>	The antibody was affinity-purified from rabbit antiserum by affinity-chromatography using epitope-specific immunogen.

---

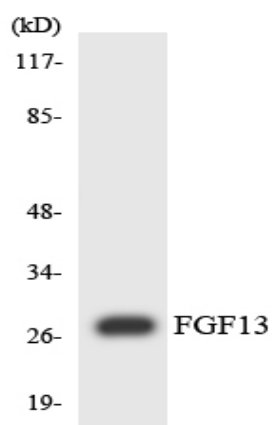
<b>Concentration :</b>	1 mg/ml
<b>Storage Stability :</b>	-15°C to -25°C/1 year(Do not lower than -25°C)
<b>Observed Band :</b>	28kD
<b>Cell Pathway :</b>	MAPK_ERK_Growth;MAPK_G_Protein;Regulates Actin and Cytoskeleton;Pathways in cancer;Melanoma;
<b>Background :</b>	<p>The protein encoded by this gene is a member of the fibroblast growth factor (FGF) family. FGF family members possess broad mitogenic and cell survival activities, and are involved in a variety of biological processes, including embryonic development, cell growth, morphogenesis, tissue repair, tumor growth, and invasion. This gene is located in a region on chromosome X, which is associated with Borjeson-Forssman-Lehmann syndrome (BFLS), making it a possible candidate gene for familial cases of the BFLS, and for other syndromal and nonspecific forms of X-linked mental retardation mapping to this region. Alternative splicing of this gene at the 5' end results in several transcript variants encoding different isoforms with different N-termini. [provided by RefSeq, Nov 2008],</p>
<b>Function :</b>	<p>function:Probably involved in nervous system development and function.,similarity:Belongs to the heparin-binding growth factors family.,tissue specificity:Nervous system.,</p>
<b>Subcellular Location :</b>	<p>[Isoform 1]: Nucleus .; [Isoform 2]: Cytoplasm . Nucleus .; [Isoform 3]: Cytoplasm . Nucleus .; [Isoform 4]: Cytoplasm . Nucleus .; [Isoform 5]: Cytoplasm . Nucleus .; Cell projection, filopodium . Cell projection, growth cone . Cell projection, dendrite . Cell membrane, sarcolemma . Cytoplasm . Not secreted. Localizes to the lateral membrane and intercalated disks of myocytes. .</p>
<b>Expression :</b>	Ubiquitously expressed. Predominantly expressed in the nervous system.
<b>Sort :</b>	6011
<b>No4 :</b>	1
<b>Host :</b>	Rabbit
<b>Modifications :</b>	Unmodified

---

## Products Images



Western Blot analysis of JK cells using FGF-13 Polyclonal Antibody diluted at 1:500



Western blot analysis of the lysates from Jurkat cells using FGF13 antibody.