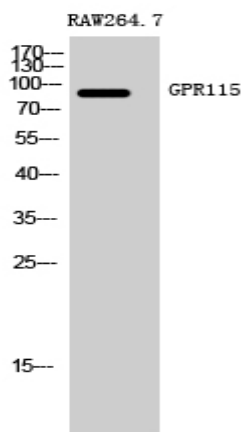


GPR115 Polyclonal Antibody

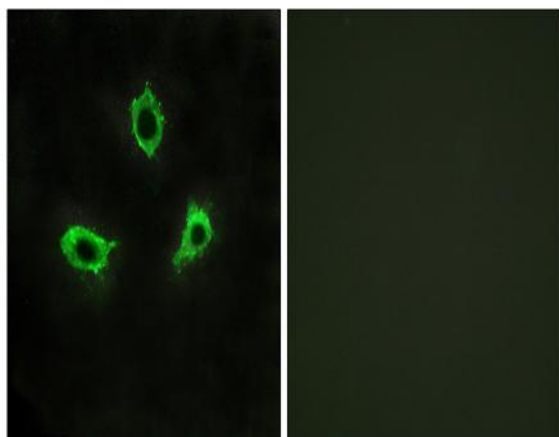
Catalog No :	YT1959
Reactivity :	Human;Mouse
Applications :	WB;IF;ELISA
Target :	GPR115
Gene Name :	GPR115
Protein Name :	Probable G-protein coupled receptor 115
Human Gene Id :	221393
Human Swiss Prot No :	Q8IZF3
Mouse Gene Id :	78249
Mouse Swiss Prot No :	Q9D2L6
Immunogen :	The antiserum was produced against synthesized peptide derived from human GPR115. AA range:641-690
Specificity :	GPR115 Polyclonal Antibody detects endogenous levels of GPR115 protein.
Formulation :	Liquid in PBS containing 50% glycerol, 0.5% BSA and 0.02% sodium azide.
Source :	Polyclonal, Rabbit,IgG
Dilution :	WB 1:500 - 1:2000. IF 1:200 - 1:1000. ELISA: 1:10000. Not yet tested in other applications.
Purification :	The antibody was affinity-purified from rabbit antiserum by affinity-chromatography using epitope-specific immunogen.
Concentration :	1 mg/ml
Storage Stability :	-15°C to -25°C/1 year(Do not lower than -25°C)

Observed Band :	82kD
Background :	function:Orphan receptor.,similarity:Belongs to the G-protein coupled receptor 2 family. LN-TM7 subfamily.,similarity:Contains 1 GPS domain.,
Function :	function:Orphan receptor.,similarity:Belongs to the G-protein coupled receptor 2 family. LN-TM7 subfamily.,similarity:Contains 1 GPS domain.,
Subcellular Location :	Membrane ; Multi-pass membrane protein .
Expression :	Testis,
Sort :	6987
No4 :	1
Host :	Rabbit
Modifications :	Unmodified

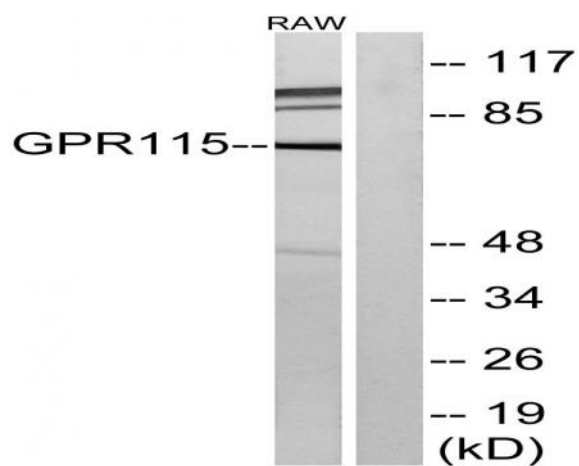
Products Images



Western Blot analysis of RAW264.7 cells using GPR115 Polyclonal Antibody



Immunofluorescence analysis of LOVO cells, using GPR115 Antibody. The picture on the right is blocked with the synthesized peptide.



Western blot analysis of lysates from RAW264.7 cells, using GPR115 Antibody. The lane on the right is blocked with the synthesized peptide.