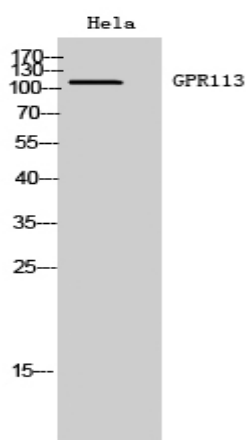


## GPR113 Polyclonal Antibody

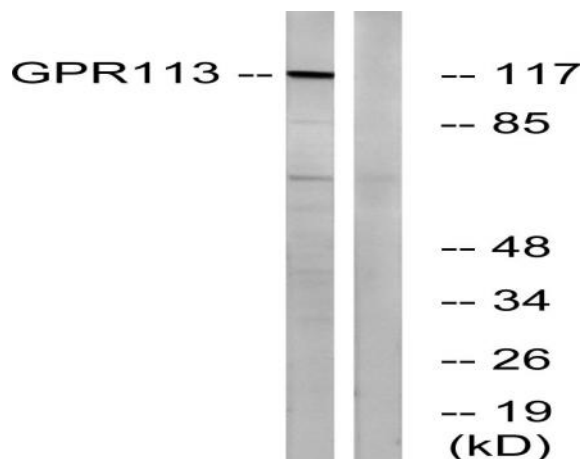
<b>Catalog No :</b>	YT1956
<b>Reactivity :</b>	Human;Rat;Mouse;
<b>Applications :</b>	WB;ELISA
<b>Target :</b>	GPR113
<b>Gene Name :</b>	GPR113
<b>Protein Name :</b>	Probable G-protein coupled receptor 113
<b>Human Gene Id :</b>	165082
<b>Human Swiss Prot No :</b>	Q8IZF5
<b>Mouse Swiss Prot No :</b>	Q58Y75
<b>Immunogen :</b>	The antiserum was produced against synthesized peptide derived from human GPR113. AA range:21-70
<b>Specificity :</b>	GPR113 Polyclonal Antibody detects endogenous levels of GPR113 protein.
<b>Formulation :</b>	Liquid in PBS containing 50% glycerol, 0.5% BSA and 0.02% sodium azide.
<b>Source :</b>	Polyclonal, Rabbit,IgG
<b>Dilution :</b>	WB 1:500 - 1:2000. ELISA: 1:40000. Not yet tested in other applications.
<b>Purification :</b>	The antibody was affinity-purified from rabbit antiserum by affinity-chromatography using epitope-specific immunogen.
<b>Concentration :</b>	1 mg/ml
<b>Storage Stability :</b>	-15°C to -25°C/1 year(Do not lower than -25°C)
<b>Observed Band :</b>	116kD

<b>Background :</b>	function:Orphan receptor.,similarity:Belongs to the G-protein coupled receptor 2 family. LN-TM7 subfamily.,similarity:Contains 1 GPS domain.,
<b>Function :</b>	function:Orphan receptor.,similarity:Belongs to the G-protein coupled receptor 2 family. LN-TM7 subfamily.,similarity:Contains 1 GPS domain.,
<b>Subcellular Location :</b>	Membrane ; Multi-pass membrane protein .
<b>Expression :</b>	Cerebellum,
<b>Sort :</b>	6985
<b>No4 :</b>	1
<b>Host :</b>	Rabbit
<b>Modifications :</b>	Unmodified

## Products Images



Western Blot analysis of HeLa cells using GPR113 Polyclonal Antibody diluted at 1:2000



Western blot analysis of lysates from LOVO cells, using GPR113 Antibody. The lane on the right is blocked with the synthesized peptide.