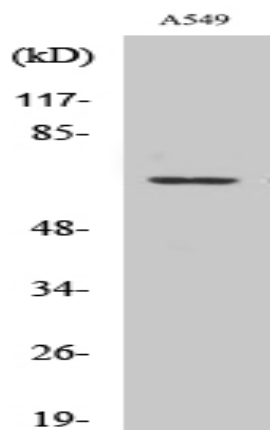


GPR108 Polyclonal Antibody

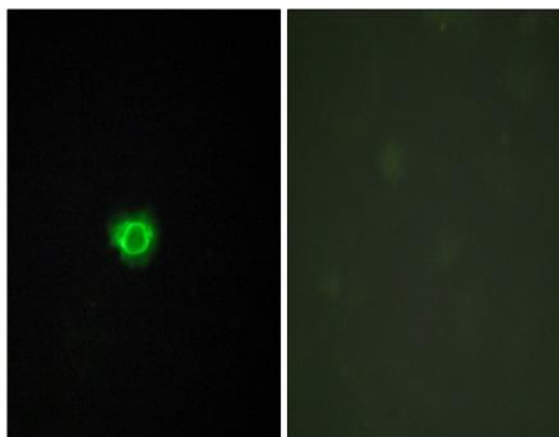
Catalog No :	YT1954
Reactivity :	Human;Rat;Mouse;
Applications :	WB;IF;ELISA
Target :	GPR108
Gene Name :	GPR108
Protein Name :	Protein GPR108
Human Gene Id :	56927
Human Swiss Prot No :	Q9NPR9
Mouse Swiss Prot No :	Q91WD0
Immunogen :	The antiserum was produced against synthesized peptide derived from human GPR108. AA range:155-204
Specificity :	GPR108 Polyclonal Antibody detects endogenous levels of GPR108 protein.
Formulation :	Liquid in PBS containing 50% glycerol, 0.5% BSA and 0.02% sodium azide.
Source :	Polyclonal, Rabbit,IgG
Dilution :	WB 1:500 - 1:2000. IF 1:200 - 1:1000. ELISA: 1:5000. Not yet tested in other applications.
Purification :	The antibody was affinity-purified from rabbit antiserum by affinity-chromatography using epitope-specific immunogen.
Concentration :	1 mg/ml
Storage Stability :	-15°C to -25°C/1 year(Do not lower than -25°C)
Observed Band :	60kD

Background :	similarity:Belongs to the LU7TM family.,
Function :	similarity:Belongs to the LU7TM family.,
Subcellular Location :	Golgi apparatus, cis-Golgi network membrane ; Multi-pass membrane protein . Golgi apparatus, trans-Golgi network membrane ; Multi-pass membrane protein . Golgi apparatus membrane ; Multi-pass membrane protein . Colocalizes with TLR3, -7, -4, and -9. .
Expression :	Uterus,
Sort :	6983
No4 :	1
Host :	Rabbit
Modifications :	Unmodified

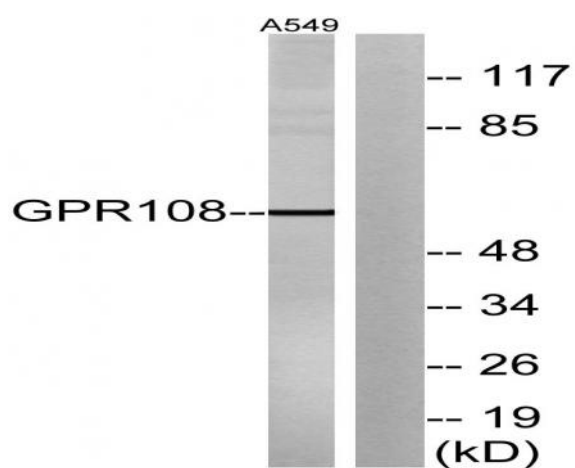
Products Images



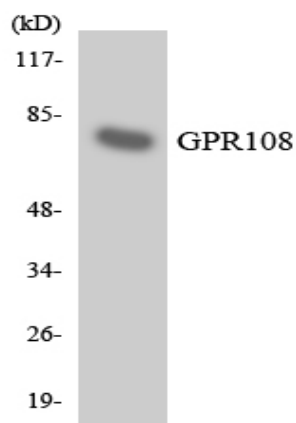
Western Blot analysis of various cells using GPR108 Polyclonal Antibody



Immunofluorescence analysis of HUVEC cells, using GPR108 Antibody. The picture on the right is blocked with the synthesized peptide.



Western blot analysis of lysates from A549 cells, using GPR108 Antibody. The lane on the right is blocked with the synthesized peptide.



Western blot analysis of the lysates from HT-29 cells using GPR108 antibody.