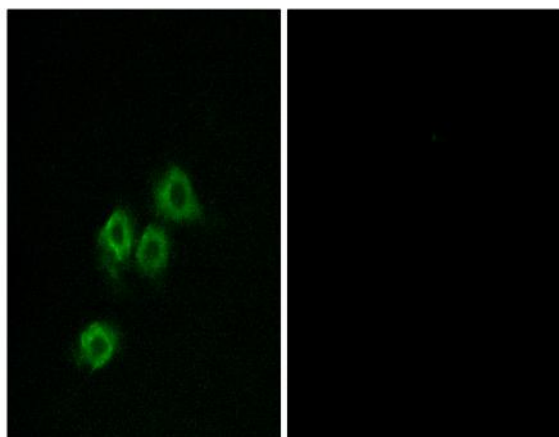


GPR1 Polyclonal Antibody

Catalog No :	YT1945
Reactivity :	Human;Mouse;Rat
Applications :	IF;ELISA
Target :	GPR1
Gene Name :	GPR1
Protein Name :	G-protein coupled receptor 1
Human Gene Id :	2825
Human Swiss Prot No :	P46091
Mouse Gene Id :	241070
Mouse Swiss Prot No :	Q8K087
Rat Gene Id :	25457
Rat Swiss Prot No :	P46090
Immunogen :	The antiserum was produced against synthesized peptide derived from human GPR1. AA range:121-170
Specificity :	GPR1 Polyclonal Antibody detects endogenous levels of GPR1 protein.
Formulation :	Liquid in PBS containing 50% glycerol, 0.5% BSA and 0.02% sodium azide.
Source :	Polyclonal, Rabbit,IgG
Dilution :	IF 1:200 - 1:1000. ELISA: 1:5000. Not yet tested in other applications.
Purification :	The antibody was affinity-purified from rabbit antiserum by affinity-chromatography using epitope-specific immunogen.

Concentration :	1 mg/ml
Storage Stability :	-15°C to -25°C/1 year(Do not lower than -25°C)
Molecularweight :	41kD
Background :	function:Orphan receptor. Probable opioid receptor. Can act as a co-receptor for HIV-1.,similarity:Belongs to the G-protein coupled receptor 1 family.,tissue specificity:Expressed in hippocampus.,
Function :	function:Orphan receptor. Probable opioid receptor. Can act as a co-receptor for HIV-1.,similarity:Belongs to the G-protein coupled receptor 1 family.,tissue specificity:Expressed in hippocampus.,
Subcellular Location :	Cell membrane ; Multi-pass membrane protein . Internalizes in presence of its ligand, TFAA1 (By similarity). Internalizes efficiently in response to RARRES2 (PubMed:27716822). .
Expression :	Expressed in hippocampus.
Sort :	6974
No4 :	1
Host :	Rabbit
Modifications :	Unmodified

Products Images



Immunofluorescence analysis of MCF7 cells, using GPR1 Antibody. The picture on the right is blocked with the synthesized peptide.