

GNL3L Polyclonal Antibody

Catalog No :	YT1938
Reactivity :	Human;Rat;Mouse;Cat
Applications :	WB;IHC;IF;ELISA
Target :	GNL3L
Fields :	>>Ribosome biogenesis in eukaryotes
Gene Name :	GNL3L
Protein Name :	Guanine nucleotide-binding protein-like 3-like protein
Human Gene Id :	54552
Human Swiss Prot No :	Q9NVN8
Mouse Swiss Prot No :	Q6PGG6
Immunogen :	The antiserum was produced against synthesized peptide derived from human GNL3L. AA range:71-120
Specificity :	GNL3L Polyclonal Antibody detects endogenous levels of GNL3L protein.
Formulation :	Liquid in PBS containing 50% glycerol, 0.5% BSA and 0.02% sodium azide.
Source :	Polyclonal, Rabbit,IgG
Dilution :	WB 1:500 - 1:2000. IHC 1:100 - 1:300. ELISA: 1:5000.. IF 1:50-200
Purification :	The antibody was affinity-purified from rabbit antiserum by affinity-chromatography using epitope-specific immunogen.
Concentration :	1 mg/ml
Storage Stability :	-15°C to -25°C/1 year(Do not lower than -25°C)

Observed Band : 66kD

Background : The protein encoded by this gene appears to be a nucleolar GTPase that is essential for ribosomal pre-rRNA processing and cell proliferation. Two transcript variants encoding the same protein have been found for this gene. [provided by RefSeq, May 2010],

Function : domain:In contrast to other GTP-binding proteins, this family is characterized by a circular permutation of the GTPase motifs described by a G4-G1-G3 pattern.,function:Required for normal processing of ribosomal pre-rRNA. Required for cell proliferation. Binds GTP.,similarity:Belongs to the MMR1/HSR1 GTP-binding protein family.,

Subcellular Location : Nucleus, nucleolus .

Expression : Lung,Skin,

Tag : orthogonal

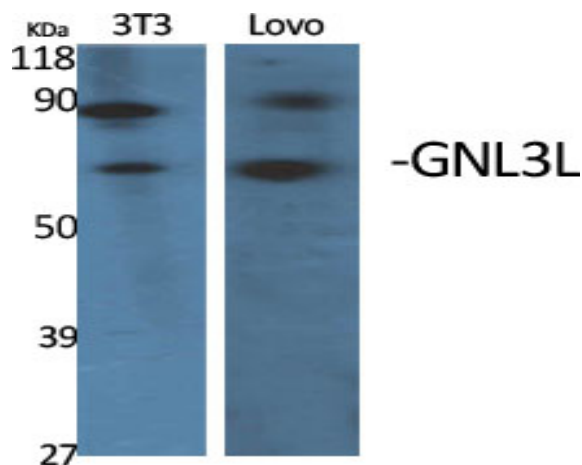
Sort : 6679

No4 : 1

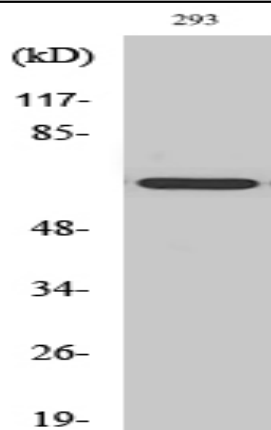
Host : Rabbit

Modifications : Unmodified

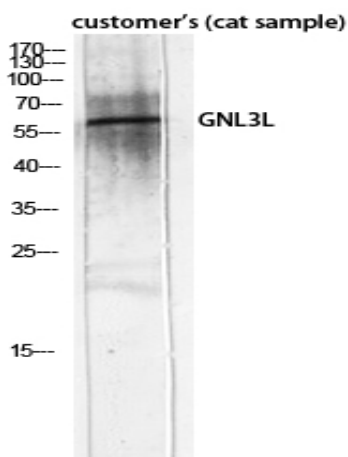
Products Images



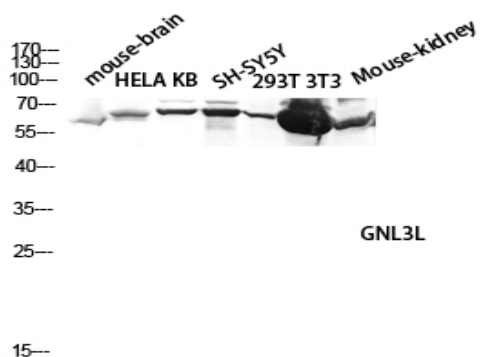
Western Blot analysis of various cells using GNL3L Polyclonal Antibody diluted at 1:2000 cells nucleus extracted by Minute TM Cytoplasmic and Nuclear Fractionation kit (SC-003, Inventbiotech, MN, USA).



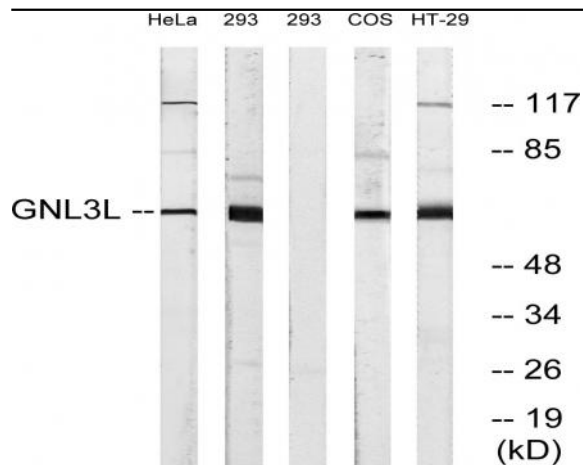
Western Blot analysis of HT29 cells using GNL3L Polyclonal Antibody diluted at 1:2000 cells nucleus extracted by Minute TM Cytoplasmic and Nuclear Fractionation kit (SC-003, Inventbiotech, MN, USA).



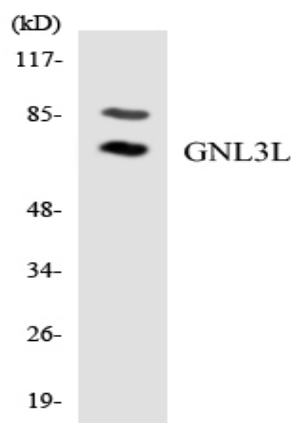
Western Blot analysis of customer's (cat sample) using GNL3L Polyclonal Antibody diluted at 1:2000 cells nucleus extracted by Minute TM Cytoplasmic and Nuclear Fractionation kit (SC-003, Inventbiotech, MN, USA).



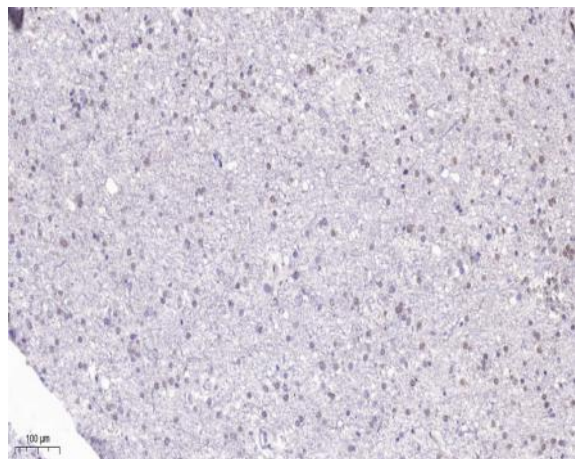
Western blot analysis of mouse-brain HELA KB SH-SY5Y 293T 3T3 Mouse-kidney lysis using GNL3L antibody. Antibody was diluted at 1:2000 cells nucleus extracted by Minute TM Cytoplasmic and Nuclear Fractionation kit (SC-003, Inventbiotech, MN, USA).



Western blot analysis of lysates from 293, HeLa, and HT-29 cells, using GNL3L Antibody. The lane on the right is blocked with the synthesized peptide.



Western blot analysis of the lysates from HUVEC cells using GNL3L antibody.



Immunohistochemical analysis of paraffin-embedded human brain. 1, Tris-EDTA, pH9.0 was used for antigen retrieval. 2 Antibody was diluted at 1:200 (4° overnight). 3, Secondary antibody was diluted at 1:200 (room temperature, 45min).