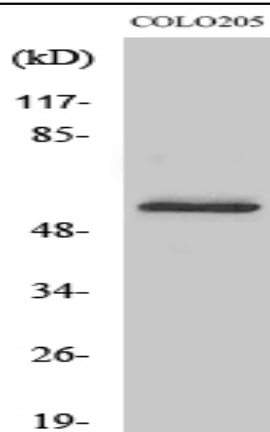


Glucagon Receptor Polyclonal Antibody

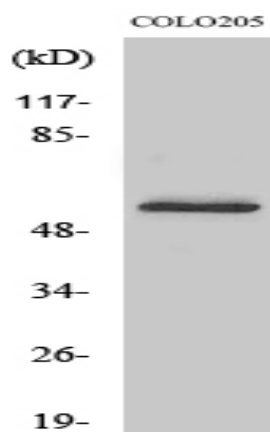
Catalog No :	YT1917
Reactivity :	Human;Mouse;Rat
Applications :	WB;IF;ELISA
Target :	Glucagon Receptor
Fields :	>>Neuroactive ligand-receptor interaction;>>Glucagon signaling pathway
Gene Name :	GCGR
Protein Name :	Glucagon receptor
Human Gene Id :	2642
Human Swiss Prot No :	P47871
Mouse Gene Id :	14527
Mouse Swiss Prot No :	Q61606
Rat Gene Id :	24953
Rat Swiss Prot No :	P30082
Immunogen :	The antiserum was produced against synthesized peptide derived from human GLR. AA range:95-144
Specificity :	Glucagon Receptor Polyclonal Antibody detects endogenous levels of Glucagon Receptor protein.
Formulation :	Liquid in PBS containing 50% glycerol, 0.5% BSA and 0.02% sodium azide.
Source :	Polyclonal, Rabbit,IgG
Dilution :	WB 1:500 - 1:2000. IF 1:200 - 1:1000. ELISA: 1:5000. Not yet tested in other applications.

Purification :	The antibody was affinity-purified from rabbit antiserum by affinity-chromatography using epitope-specific immunogen.
Concentration :	1 mg/ml
Storage Stability :	-15°C to -25°C/1 year(Do not lower than -25°C)
Observed Band :	54kD
Cell Pathway :	Neuroactive ligand-receptor interaction;
Background :	glucagon receptor(GCGR) Homo sapiens The protein encoded by this gene is a glucagon receptor that is important in controlling blood glucose levels. Defects in this gene are a cause of non-insulin-dependent diabetes mellitus (NIDDM).[provided by RefSeq, Jan 2010],
Function :	disease:It is a candidate for certain defects in non-insulin-dependent diabetes mellitus (NIDDM). The variant in position 40 (Ser) is found in some NIDDM patients, but also in nondiabetic subjects.,function:This is a receptor for glucagon which plays a central role in regulating the level of blood glucose by controlling the rate of hepatic glucose production and insulin secretion. The activity of this receptor is mediated by G proteins which activate adenylyl cyclase and also a phosphatidylinositol-calcium second messenger system.,similarity:Belongs to the G-protein coupled receptor 2 family.,
Subcellular Location :	Cell membrane ; Multi-pass membrane protein . Is rapidly internalized after ligand-binding. .
Expression :	Liver,Placenta,
Sort :	6614
No4 :	1
Host :	Rabbit
Modifications :	Unmodified

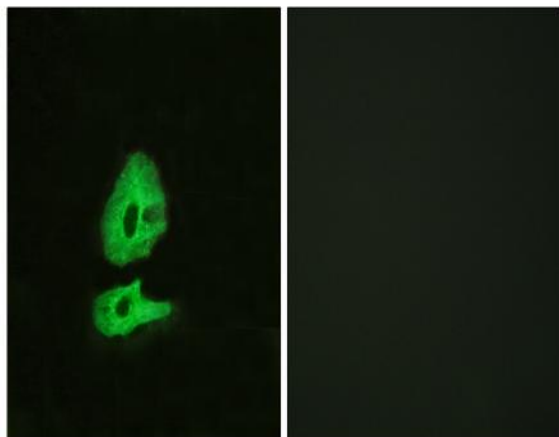
Products Images



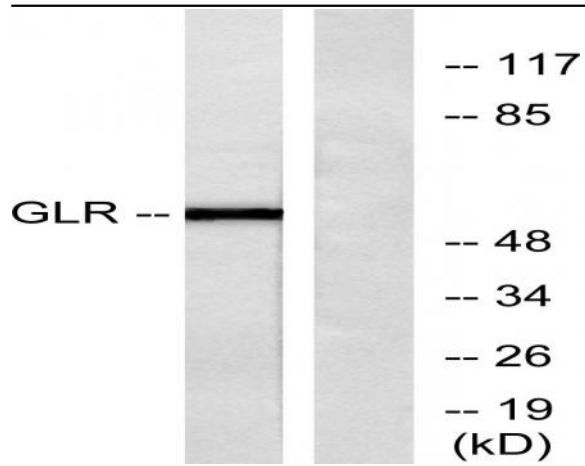
Western Blot analysis of various cells using Glucagon Receptor Polyclonal Antibody



Western Blot analysis of COLO205 cells using Glucagon Receptor Polyclonal Antibody



Immunofluorescence analysis of HeLa cells, using GLR Antibody. The picture on the right is blocked with the synthesized peptide.



Western blot analysis of lysates from COLO205 cells, using GLR Antibody. The lane on the right is blocked with the synthesized peptide.