

## GK2 Polyclonal Antibody

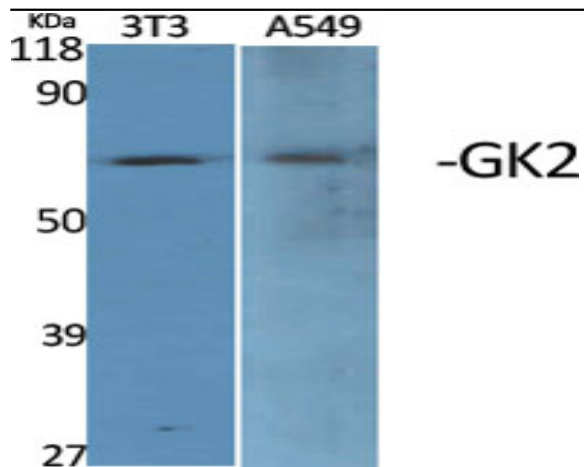
<b>Catalog No :</b>	YT1912
<b>Reactivity :</b>	Human;Rat;Mouse;
<b>Applications :</b>	WB;IHC;IF;ELISA
<b>Target :</b>	GK2
<b>Fields :</b>	>>Glycerolipid metabolism;>>Metabolic pathways;>>PPAR signaling pathway
<b>Gene Name :</b>	GK2
<b>Protein Name :</b>	Glycerol kinase 2
<b>Human Gene Id :</b>	2712
<b>Human Swiss Prot No :</b>	Q14410
<b>Mouse Swiss Prot No :</b>	Q9WU65
<b>Immunogen :</b>	The antiserum was produced against synthesized peptide derived from human GK2. AA range:281-330
<b>Specificity :</b>	GK2 Polyclonal Antibody detects endogenous levels of GK2 protein.
<b>Formulation :</b>	Liquid in PBS containing 50% glycerol, 0.5% BSA and 0.02% sodium azide.
<b>Source :</b>	Polyclonal, Rabbit,IgG
<b>Dilution :</b>	WB 1:500 - 1:2000. IHC 1:100 - 1:300. IF 1:200 - 1:1000. ELISA: 1:20000. Not yet tested in other applications.
<b>Purification :</b>	The antibody was affinity-purified from rabbit antiserum by affinity-chromatography using epitope-specific immunogen.
<b>Concentration :</b>	1 mg/ml
<b>Storage Stability :</b>	-15°C to -25°C/1 year(Do not lower than -25°C)

---

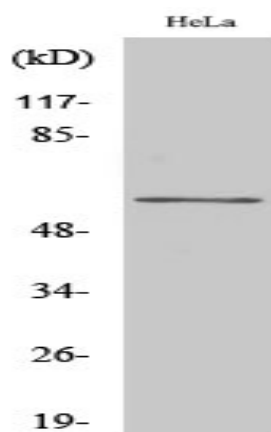
<b>Observed Band :</b>	61kD
<b>Cell Pathway :</b>	Glycerolipid metabolism;PPAR;
<b>Background :</b>	catalytic activity:ATP + glycerol = ADP + sn-glycerol 3-phosphate.,function:Key enzyme in the regulation of glycerol uptake and metabolism.,pathway:Polyol metabolism; glycerol degradation via glycerol kinase pathway; sn-glycerol 3-phosphate from glycerol: step 1/1.,similarity:Belongs to the FGGY kinase family.,subcellular location:In sperm the majority of the enzyme is bound to mitochondria.,
<b>Function :</b>	catalytic activity:ATP + glycerol = ADP + sn-glycerol 3-phosphate.,function:Key enzyme in the regulation of glycerol uptake and metabolism.,pathway:Polyol metabolism; glycerol degradation via glycerol kinase pathway; sn-glycerol 3-phosphate from glycerol: step 1/1.,similarity:Belongs to the FGGY kinase family.,subcellular location:In sperm the majority of the enzyme is bound to mitochondria.,
<b>Subcellular Location :</b>	Mitochondrion outer membrane ; Single-pass type IV membrane protein . Cytoplasm . In sperm the majority of the enzyme is bound to mitochondria. .
<b>Expression :</b>	Testis-specific (PubMed:33536340). Expressed in the midpiece of spermatozoa (PubMed:28852571).
<b>Sort :</b>	6593
<b>No4 :</b>	1
<b>Host :</b>	Rabbit
<b>Modifications :</b>	Unmodified

---

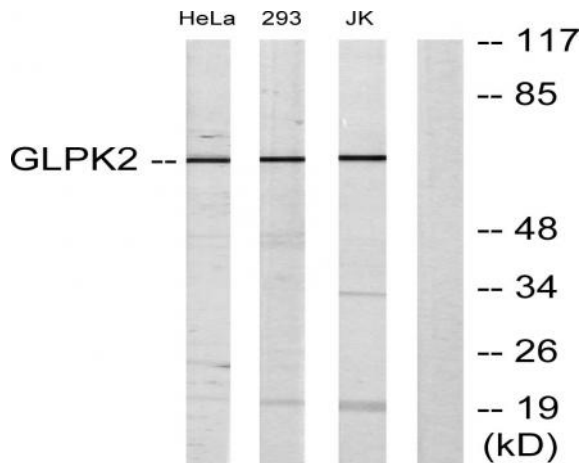
## Products Images



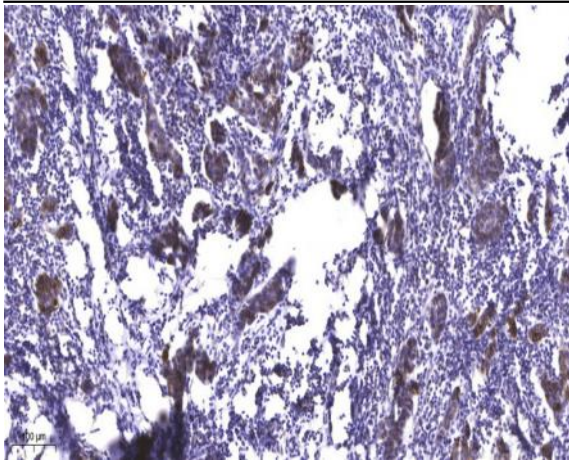
Western Blot analysis of various cells using GK2 Polyclonal Antibody



Western Blot analysis of Jurkat cells using GK2 Polyclonal Antibody



Western blot analysis of lysates from HeLa, 293, and Jurkat cells, using GK2 Antibody. The lane on the right is blocked with the synthesized peptide.



Immunohistochemical analysis of paraffin-embedded human Breast cancer. 1, Antibody was diluted at 1:200(4° overnight). 2, Tris-EDTA,pH9.0 was used for antigen retrieval. 3,Secondary antibody was diluted at 1:200(room temperature, 45min).