

## ACE2 (PT0084R) PT® Rabbit mAb

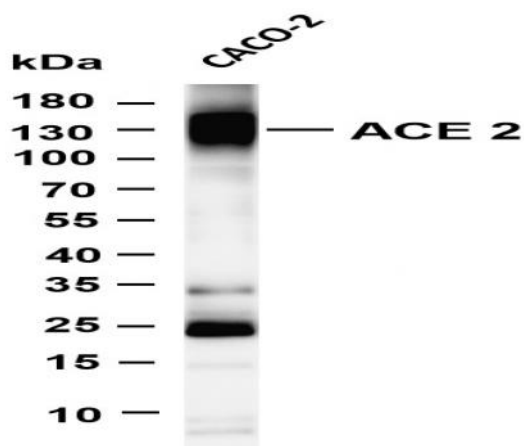
<b>Catalog No :</b>	YM8047
<b>Reactivity :</b>	Human;
<b>Applications :</b>	WB;IHC;IF;IP;ELISA
<b>Target :</b>	ACE2
<b>Gene Name :</b>	ACE2 UNQ868/PRO1885
<b>Protein Name :</b>	ACE2
<b>Human Gene Id :</b>	59272
<b>Human Swiss Prot No :</b>	Q9BYF1
<b>Mouse Gene Id :</b>	70008
<b>Mouse Swiss Prot No :</b>	Q8R0I0
<b>Rat Gene Id :</b>	302668
<b>Rat Swiss Prot No :</b>	Q5EGZ1
<b>Specificity :</b>	endogenous
<b>Formulation :</b>	PBS, 50% glycerol, 0.05% Proclin 300, 0.05%BSA
<b>Source :</b>	Monoclonal, rabbit, IgG, Kappa
<b>Dilution :</b>	IHC 1:1000-1:4000;WB 1:1000-1:5000;IF 1:200-1:1000;ELISA 1:5000-1:20000;IP 1:50-1:200;
<b>Purification :</b>	Protein A
<b>Storage Stability :</b>	-15°C to -25°C/1 year(Do not lower than -25°C)

---

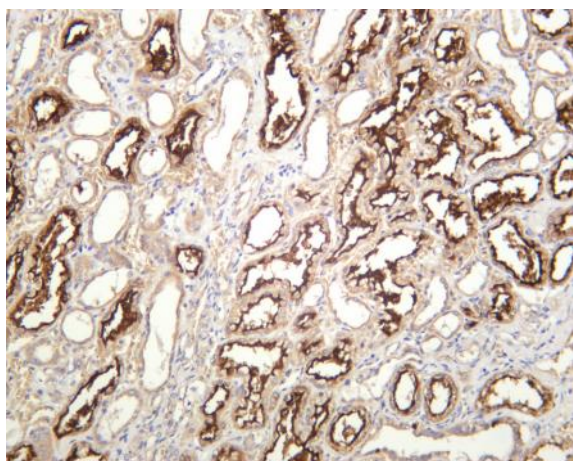
<b>Molecularweight :</b>	130kD
<b>Observed Band :</b>	130kD
<b>Function :</b>	cofactor: Binds 1 chloride ion per subunit., cofactor: Binds 1 zinc ion per subunit., enzyme regulation: Activated by chloride and fluoride, but not bromide. Inhibited by MLN-4760, cFP_Leu, and EDTA, but not by the ACE inhibitors linosipril, captopril and enalaprilat., function: Carboxypeptidase which converts angiotensin I to angiotensin 1-9, a peptide of unknown function, and angiotensin II to angiotensin 1-7, a vasodilator. Also able to hydrolyze apelin-13 and dynorphin-13 with high efficiency. May be an important regulator of heart function. In case of human coronaviruses SARS and HCoV-NL63 infections, serve as functional receptor for the spike glycoprotein of both coronaviruses., induction: Up-regulated in failing heart., PTM: N-glycosylation on Asn-90 may limit SARS infectivity., similarity: Belongs to the peptidase M2 family., subunit: Interacts with ITGB1. Interacts with SARS-CoV and HCoV-NL63
<b>Subcellular Location :</b>	Membrane
<b>Expression :</b>	Expressed in endothelial cells from small and large arteries, and in arterial smooth muscle cells (at protein level) (PubMed:15141377). Expressed in enterocytes of the small intestine, Leydig cells and Sertoli cells (at protein level) (PubMed:15141377). Expressed in the renal proximal tubule and the small intestine (at protein level) (PubMed:18424768). Expressed in heart, kidney, testis, and gastrointestinal system (at protein level) (PubMed:10969042, PubMed:10924499, PubMed:15231706, PubMed:12459472, PubMed:15671045, PubMed:32715618, PubMed:32170560). In lung, expressed at low levels in some alveolar type 2 cells, the expression seems to be individual-specific (at protein level) (PubMed:32425701, PubMed:15141377, PubMed:32715618, PubMed:32170560, PubMed:33432184). Expressed in nasal epith
<b>Tag :</b>	hot, recombinant
<b>Sort :</b>	999
<b>No4 :</b>	1
<b>Host :</b>	Rabbit
<b>Modifications :</b>	Unmodified

---

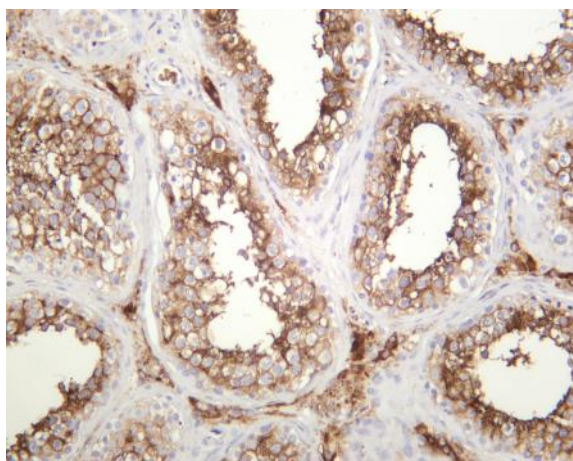
## Products Images



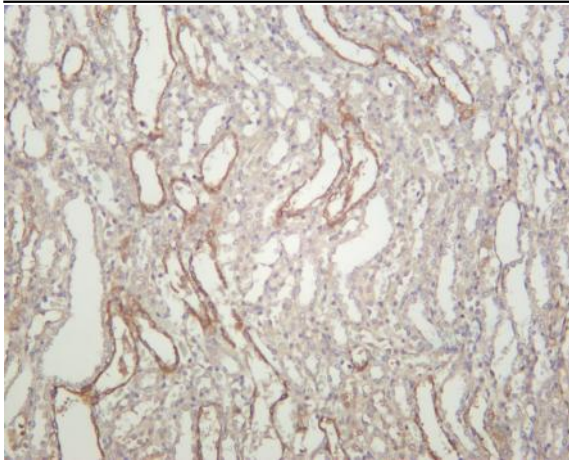
Various whole cell lysates were separated by 4-20% SDS-PAGE, and the membrane was blotted with anti-ACE2 (PT0084R) antibody. The HRP-conjugated Goat anti-Rabbit IgG(H + L) antibody was used to detect the antibody. Lane 1: CACO-2  
Predicted band size: 130kDa Observed band size: 130kDa



Human kidney was stained with anti-ACE2 (PT0084R) rabbit antibody



Human testis was stained with anti-ACE2 (PT0084R) rabbit antibody



Rat kidney was stained with anti-ACE2 (PT0084R) rabbit antibody