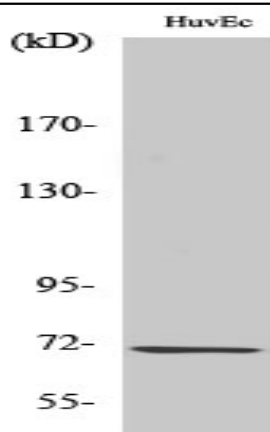


GCS- β -1 Polyclonal Antibody

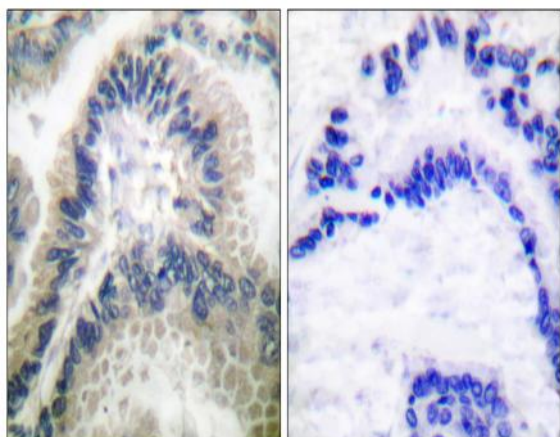
Catalog No :	YT1886
Reactivity :	Human;Mouse;Rat
Applications :	WB;IHC;IF;ELISA
Target :	GCS- β -1
Fields :	>>Purine metabolism;>>Metabolic pathways;>>cGMP-PKG signaling pathway;>>Vascular smooth muscle contraction;>>Gap junction;>>Platelet activation;>>Circadian entrainment;>>Long-term depression;>>Oxytocin signaling pathway;>>Renin secretion;>>Salivary secretion
Gene Name :	GUCY1B3
Protein Name :	Guanylate cyclase soluble subunit beta-1
Human Gene Id :	2983
Human Swiss Prot No :	Q02153
Mouse Gene Id :	54195
Mouse Swiss Prot No :	O54865
Rat Gene Id :	25202
Rat Swiss Prot No :	P20595
Immunogen :	The antiserum was produced against synthesized peptide derived from human Guanylate Cyclase beta. AA range:10-59
Specificity :	GCS- β -1 Polyclonal Antibody detects endogenous levels of GCS- β -1 protein.
Formulation :	Liquid in PBS containing 50% glycerol, 0.5% BSA and 0.02% sodium azide.
Source :	Polyclonal, Rabbit,IgG

Dilution :	WB 1:500 - 1:2000. IHC 1:100 - 1:300. ELISA: 1:5000.. IF 1:50-200
Purification :	The antibody was affinity-purified from rabbit antiserum by affinity-chromatography using epitope-specific immunogen.
Concentration :	1 mg/ml
Storage Stability :	-15°C to -25°C/1 year(Do not lower than -25°C)
Observed Band :	70kD
Cell Pathway :	Purine metabolism;Vascular smooth muscle contraction;Gap junction;Long-term depression;
Background :	This gene encodes the beta subunit of the soluble guanylate cyclase (sGC), which catalyzes the conversion of GTP (guanosine triphosphate) to cGMP (cyclic guanosine monophosphate). The encoded protein contains an HNOX domain, which serves as a receptor for ligands such as nitric oxide, oxygen and nitrovasodilator drugs. Alternative splicing results in multiple transcript variants. [provided by RefSeq, May 2014],
Function :	catalytic activity:GTP = 3',5'-cyclic GMP + diphosphate.,cofactor:Binds 1 or 2 heme groups per heterodimer.,enzyme regulation:Activated by nitric oxide in the presence of magnesium or manganese ions.,miscellaneous:There are two types of guanylate cyclases: soluble forms and membrane-associated receptor forms.,similarity:Belongs to the adenylyl cyclase class-4/guanylyl cyclase family.,similarity:Contains 1 guanylate cyclase domain.,subunit:Heterodimer of an alpha and a beta chain.,
Subcellular Location :	Cytoplasm .
Expression :	Detected in brain cortex and cerebellum (at protein level).
Sort :	6525
No4 :	1
Host :	Rabbit
Modifications :	Unmodified

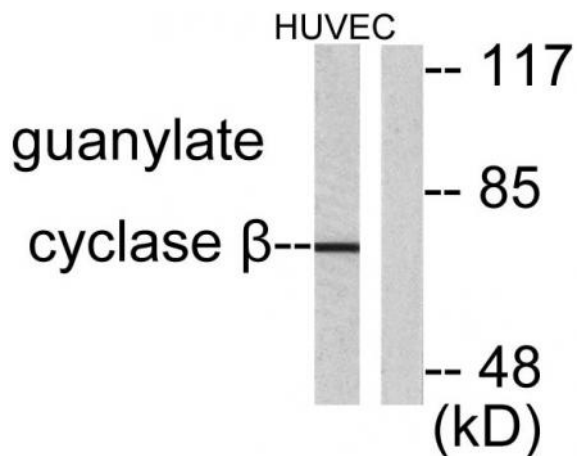
Products Images



Western Blot analysis of various cells using GCS- β -1 Polyclonal Antibody



Immunohistochemistry analysis of paraffin-embedded human lung carcinoma tissue, using Guanylate Cyclase beta Antibody. The picture on the right is blocked with the synthesized peptide.



Western blot analysis of lysates from HUVEC cells, using Guanylate Cyclase beta Antibody. The lane on the right is blocked with the synthesized peptide.