

Ephrin-A1 Polyclonal Antibody

Catalog No :	YT1589
Reactivity :	Human;Mouse;Rat
Applications :	WB;IHC;IF;ELISA
Target :	Ephrin-A1
Fields :	>>MAPK signaling pathway;>>Ras signaling pathway;>>Rap1 signaling pathway;>>PI3K-Akt signaling pathway;>>Axon guidance;>>MicroRNAs in cancer
Gene Name :	EFNA1
Protein Name :	Ephrin-A1
Human Gene Id :	1942
Human Swiss Prot No :	P20827
Mouse Gene Id :	13636
Mouse Swiss Prot No :	P52793
Rat Gene Id :	94268
Rat Swiss Prot No :	P97553
Immunogen :	The antiserum was produced against synthesized peptide derived from human EFNA1. AA range:66-115
Specificity :	Ephrin-A1 Polyclonal Antibody detects endogenous levels of Ephrin-A1 protein.
Formulation :	Liquid in PBS containing 50% glycerol, 0.5% BSA and 0.02% sodium azide.
Source :	Polyclonal, Rabbit,IgG
Dilution :	WB 1:500 - 1:2000. IHC 1:100 - 1:300. IF 1:200 - 1:1000. ELISA: 1:10000. Not

yet tested in other applications.

Purification : The antibody was affinity-purified from rabbit antiserum by affinity-chromatography using epitope-specific immunogen.

Concentration : 1 mg/ml

Storage Stability : -15°C to -25°C/1 year(Do not lower than -25°C)

Observed Band : 24kD

Cell Pathway : Axon guidance;

Background : This gene encodes a member of the ephrin (EPH) family. The ephrins and EPH-related receptors comprise the largest subfamily of receptor protein-tyrosine kinases and have been implicated in mediating developmental events, especially in the nervous system and in erythropoiesis. Based on their structures and sequence relationships, ephrins are divided into the ephrin-A (EFNA) class, which are anchored to the membrane by a glycosylphosphatidylinositol linkage, and the ephrin-B (EFNB) class, which are transmembrane proteins. This gene encodes an EFNA class ephrin which binds to the EPHA2, EPHA4, EPHA5, EPHA6, and EPHA7 receptors. Two transcript variants that encode different isoforms were identified through sequence analysis. [provided by RefSeq, Jul 2008],

Function : induction:By TNF-alpha and interleukin-1 beta.,similarity:Belongs to the ephrin family.,subunit:Binds to the receptor tyrosine kinases EPHA2, EPHA4, EPHA5, EPHA6 and EPHA7. Also binds with low affinity to EPHA1.,

Subcellular Location : Cell membrane ; Lipid-anchor, GPI-anchor .; [Ephrin-A1, secreted form]: Secreted .

Expression : Brain. Down-regulated in primary glioma tissues compared to the normal tissues. The soluble monomeric form is expressed in the glioblastoma multiforme (GBM) and breast cancer cells (at protein level).

Tag : hot

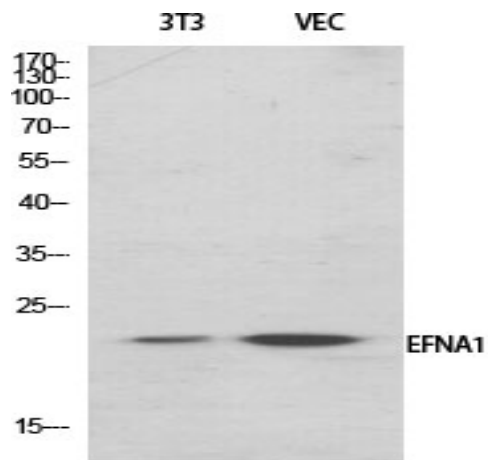
Sort : 5658

No4 : 1

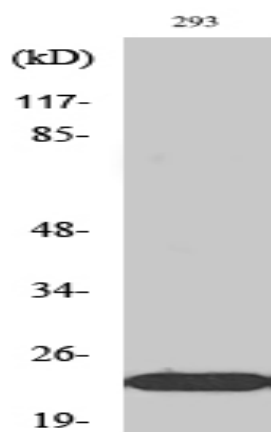
Host : Rabbit

Modifications : Unmodified

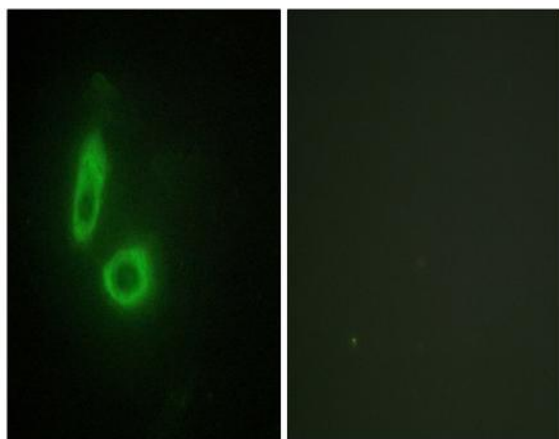
Products Images



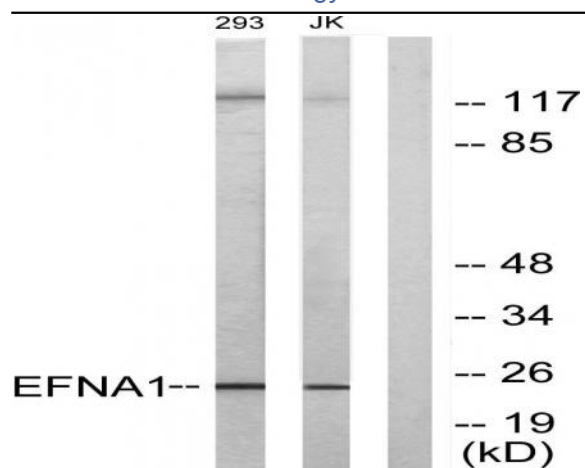
Western Blot analysis of various cells using Ephrin-A1 Polyclonal Antibody diluted at 1:2000



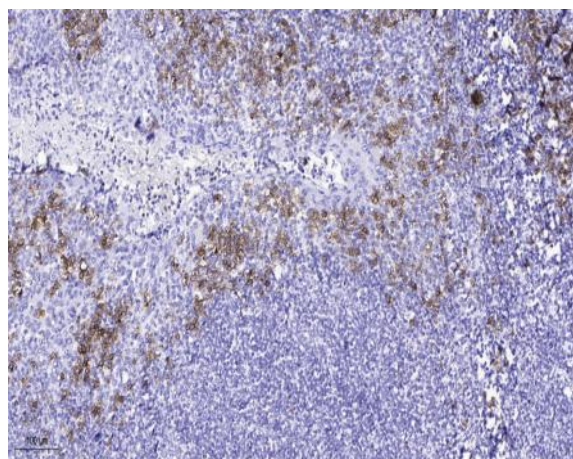
Western Blot analysis of Jurkat cells using Ephrin-A1 Polyclonal Antibody diluted at 1:2000



Immunofluorescence analysis of HeLa cells, using EFNA1 Antibody. The picture on the right is blocked with the synthesized peptide.



Western blot analysis of lysates from 293 and Jurkat cells, using EFNA1 Antibody. The lane on the right is blocked with the synthesized peptide.



Immunohistochemical analysis of paraffin-embedded human tonsil. 1, Antibody was diluted at 1:200(4° overnight). 2, Tris-EDTA,pH9.0 was used for antigen retrieval. 3,Secondary antibody was diluted at 1:200(room temperature, 45min).