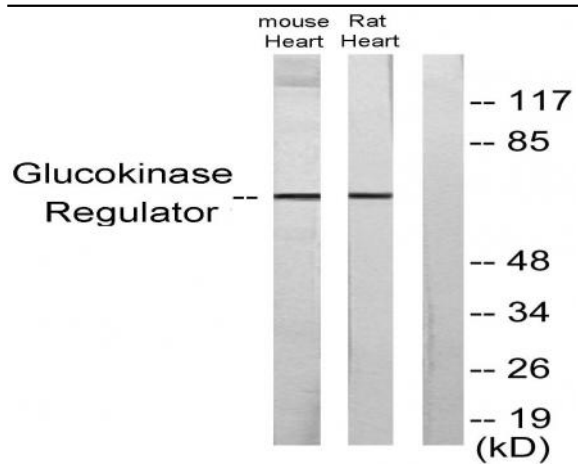


GCKR Polyclonal Antibody

Catalog No :	YT1873
Reactivity :	Human;Mouse;Rat
Applications :	WB;ELISA
Target :	GCKR
Gene Name :	GCKR
Protein Name :	Glucokinase regulatory protein
Human Gene Id :	2646
Human Swiss Prot No :	Q14397
Mouse Gene Id :	231103
Mouse Swiss Prot No :	Q91X44
Rat Gene Id :	25658
Rat Swiss Prot No :	Q07071
Immunogen :	The antiserum was produced against synthesized peptide derived from human Glucokinase Regulator. AA range:211-260
Specificity :	GCKR Polyclonal Antibody detects endogenous levels of GCKR protein.
Formulation :	Liquid in PBS containing 50% glycerol, 0.5% BSA and 0.02% sodium azide.
Source :	Polyclonal, Rabbit,IgG
Dilution :	WB 1:500 - 1:2000. ELISA: 1:40000. Not yet tested in other applications.
Purification :	The antibody was affinity-purified from rabbit antiserum by affinity-chromatography using epitope-specific immunogen.

Concentration :	1 mg/ml
Storage Stability :	-15°C to -25°C/1 year(Do not lower than -25°C)
Observed Band :	68kD
Background :	This gene encodes a protein belonging to the GCKR subfamily of the SIS (Sugar ISomerase) family of proteins. The gene product is a regulatory protein that inhibits glucokinase in liver and pancreatic islet cells by binding non-covalently to form an inactive complex with the enzyme. This gene is considered a susceptibility gene candidate for a form of maturity-onset diabetes of the young (MODY). [provided by RefSeq, Jul 2008],
Function :	function:Inhibits glucokinase by forming an inactive complex with this enzyme.,similarity:Belongs to the GCKR family.,similarity:Contains 1 SIS domain.,tissue specificity:Found in liver and pancreas. Not detected in muscle, brain, heart, thymus, intestine, uterus, adipose tissue, kidney, adrenal, lung or spleen.,
Subcellular Location :	Cytoplasm . Nucleus . Mitochondrion . Under low glucose concentrations, GCKR associates with GCK and the inactive complex is recruited to the hepatocyte nucleus. .
Expression :	Found in liver and pancreas. Not detected in muscle, brain, heart, thymus, intestine, uterus, adipose tissue, kidney, adrenal, lung or spleen.
Sort :	6506
No4 :	1
Host :	Rabbit
Modifications :	Unmodified

Products Images



Western blot analysis of lysates from mouse heart and rat heart cells, using Glucokinase Regulator Antibody. The lane on the right is blocked with the synthesized peptide.