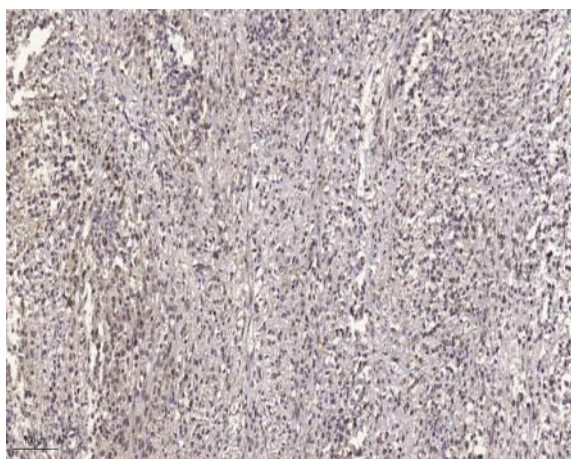


GBP5 Polyclonal Antibody

Catalog No :	YT1870
Reactivity :	Human;Rat;Mouse;
Applications :	IHC;IF;WB;ELISA
Target :	GBP5
Fields :	>>NOD-like receptor signaling pathway
Gene Name :	GBP5
Protein Name :	Guanylate-binding protein 5
Human Gene Id :	115362
Human Swiss Prot No :	Q96PP8
Mouse Swiss Prot No :	Q8CFB4
Immunogen :	Synthesized peptide derived from the Internal region of human GBP5.
Specificity :	GBP5 Polyclonal Antibody detects endogenous levels of GBP5 protein.
Formulation :	Liquid in PBS containing 50% glycerol, 0.5% BSA and 0.02% sodium azide.
Source :	Polyclonal, Rabbit,IgG
Dilution :	WB 1:500-2000 IHC 1:100 - 1:300. ELISA: 1:20000.. IF 1:50-200
Purification :	The antibody was affinity-purified from rabbit antiserum by affinity-chromatography using epitope-specific immunogen.
Concentration :	1 mg/ml
Storage Stability :	-15°C to -25°C/1 year(Do not lower than -25°C)

Observed Band :	66kD
Background :	similarity:Belongs to the GBP family.,
Function :	similarity:Belongs to the GBP family.,
Subcellular Location :	Cytoplasm . Golgi apparatus membrane ; Lipid-anchor . Cytoplasmic vesicle .
Expression :	Expressed in peripheral blood monocytes (at protein level).
Tag :	hot
Sort :	6500
No4 :	1
Host :	Rabbit
Modifications :	Unmodified

Products Images



Immunohistochemical analysis of paraffin-embedded human small intestinal carcinoma tissue. 1,primary Antibody was diluted at 1:200(4° overnight). 2, Sodium citrate pH 6.0 was used for antigen retrieval(>98° C,20min). 3,Secondary antibody was diluted at 1:200