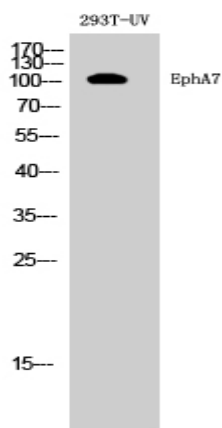


EphA7 Polyclonal Antibody

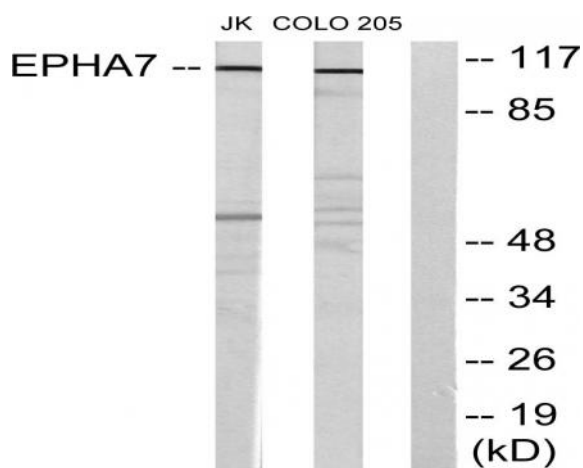
| | |
|------------------------------|---------------------------------------------------------------------------------------------------|
| Catalog No : | YT1581 |
| Reactivity : | Human;Mouse;Rat |
| Applications : | WB;IHC;IF;ELISA |
| Target : | EPHA7 |
| Fields : | >>Axon guidance |
| Gene Name : | EPHA7 |
| Protein Name : | Ephrin type-A receptor 7 |
| Human Gene Id : | 2045 |
| Human Swiss Prot No : | Q15375 |
| Mouse Gene Id : | 13841 |
| Mouse Swiss Prot No : | Q61772 |
| Rat Gene Id : | 171287 |
| Rat Swiss Prot No : | P54759 |
| Immunogen : | The antiserum was produced against synthesized peptide derived from human EPHA7. AA range:451-500 |
| Specificity : | EphA7 Polyclonal Antibody detects endogenous levels of EphA7 protein. |
| Formulation : | Liquid in PBS containing 50% glycerol, 0.5% BSA and 0.02% sodium azide. |
| Source : | Polyclonal, Rabbit,IgG |
| Dilution : | WB 1:500 - 1:2000. ELISA: 1:40000.. IF 1:50-200 |

| | |
|-------------------------------|------------------------------------------------------------------------------------------------------------------------------------------------------------------------------------------------------------------------------------------------------------------------------------------------------------------------------------------------------------------------------------------------------------------------------------------------------------------------------------------------------------------------------------------------------------------------------------------------------------------------------------------------------------------------------------------------------------------------------------------------------|
| Purification : | The antibody was affinity-purified from rabbit antiserum by affinity-chromatography using epitope-specific immunogen. |
| Concentration : | 1 mg/ml |
| Storage Stability : | -15°C to -25°C/1 year(Do not lower than -25°C) |
| Observed Band : | 112kD |
| Cell Pathway : | Axon guidance; |
| Background : | This gene belongs to the ephrin receptor subfamily of the protein-tyrosine kinase family. EPH and EPH-related receptors have been implicated in mediating developmental events, particularly in the nervous system. Receptors in the EPH subfamily typically have a single kinase domain and an extracellular region containing a Cys-rich domain and 2 fibronectin type III repeats. The ephrin receptors are divided into 2 groups based on the similarity of their extracellular domain sequences and their affinities for binding ephrin-A and ephrin-B ligands. Increased expression of this gene is associated with multiple forms of carcinoma. Alternative splicing results in multiple transcript variants. [provided by RefSeq, Dec 2013], |
| Function : | catalytic activity:ATP + a [protein]-L-tyrosine = ADP + a [protein]-L-tyrosine phosphate.,function:Receptor for members of the ephrin-A family. Binds to ephrin-A1, -A2, -A3, -A4 and -A5.,similarity:Belongs to the protein kinase superfamily. Tyr protein kinase family. Ephrin receptor subfamily.,similarity:Contains 1 protein kinase domain.,similarity:Contains 1 SAM (sterile alpha motif) domain.,similarity:Contains 2 fibronectin type-III domains.,subunit:Interacts with PRKCABP and GRIP1.,tissue specificity:Widely expressed., |
| Subcellular Location : | Cell membrane ; Single-pass type I membrane protein . |
| Expression : | Widely expressed. |
| Sort : | 5637 |
| No4 : | 1 |
| Host : | Rabbit |
| Modifications : | Unmodified |

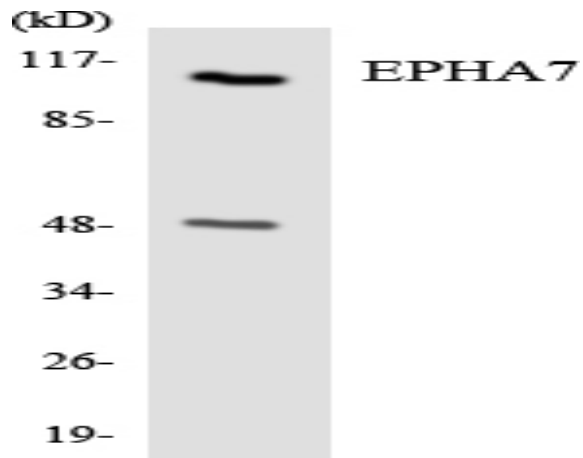
Products Images



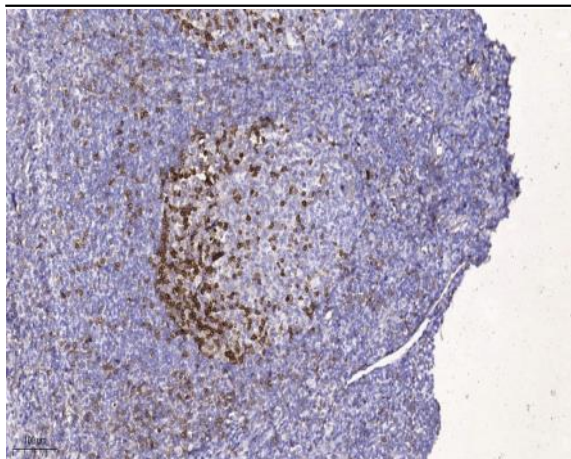
Western Blot analysis of 293T-UV cells using EphA7 Polyclonal Antibody diluted at 1:500



Western blot analysis of lysates from Jurkat cells and COLO205 cells, using EPHA7 Antibody. The lane on the right is blocked with the synthesized peptide.



Western blot analysis of the lysates from HeLa cells using EPHA7 antibody.



Immunohistochemical analysis of paraffin-embedded human tonsil. 1, Antibody was diluted at 1:200(4° overnight). 2, Tris-EDTA,pH9.0 was used for antigen retrieval. 3,Secondary antibody was diluted at 1:200(room temperature, 45min).