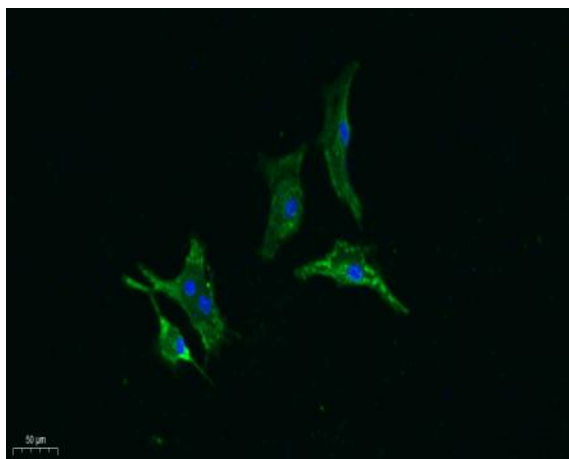


Gasdermin C Polyclonal Antibody

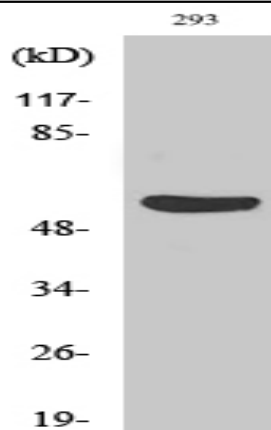
Catalog No :	YT1855
Reactivity :	Human;Rat;Mouse;
Applications :	WB IF;ELISA
Target :	Gasdermin C
Gene Name :	GSDMC
Protein Name :	Gasdermin-C
Human Gene Id :	56169
Human Swiss Prot No :	Q9BYG8
Mouse Swiss Prot No :	Q99NB5
Immunogen :	The antiserum was produced against synthesized peptide derived from human GSDMC. AA range:109-158
Specificity :	Gasdermin C Polyclonal Antibody detects endogenous levels of Gasdermin C protein.
Formulation :	Liquid in PBS containing 50% glycerol, 0.5% BSA and 0.02% sodium azide.
Source :	Polyclonal, Rabbit,IgG
Dilution :	WB 1:500-2000 IF 1:100-300 ELISA 1:5000-20000 Not yet tested in other applications.
Purification :	The antibody was affinity-purified from rabbit antiserum by affinity-chromatography using epitope-specific immunogen.
Concentration :	1 mg/ml
Storage Stability :	-15°C to -25°C/1 year(Do not lower than -25°C)

Observed Band :	55kD
Background :	caution:Despite its name, it is unclear if this protein contains a functional leucine zipper.,similarity:Belongs to the gasdermin family.,tissue specificity:Expressed primarily in trachea and spleen.,
Function :	caution:Despite its name, it is unclear if this protein contains a functional leucine zipper.,similarity:Belongs to the gasdermin family.,tissue specificity:Expressed primarily in trachea and spleen.,
Subcellular Location :	[Gasdermin-C]: Cytoplasm, cytosol .; [Gasdermin-C, N-terminal]: Cell membrane ; Multi-pass membrane protein .
Expression :	Expressed mainly in trachea and spleen (PubMed:11223543). In the esophagus, expressed in differentiating cells and probably in differentiated cells. Also detected in gastric epithelium (PubMed:19051310).
Tag :	hot
Sort :	1405
No3 :	ab254813
No4 :	1
Host :	Rabbit
Modifications :	Unmodified

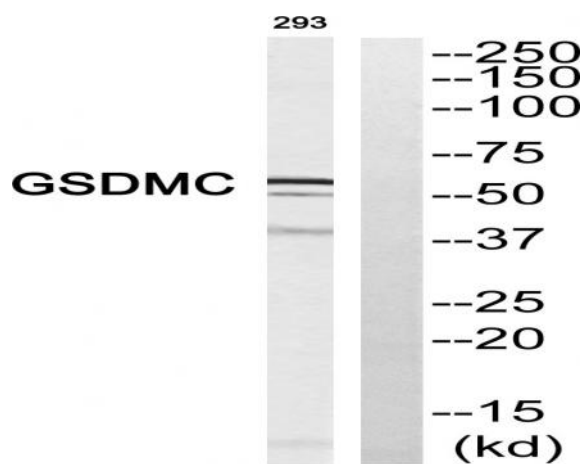
Products Images



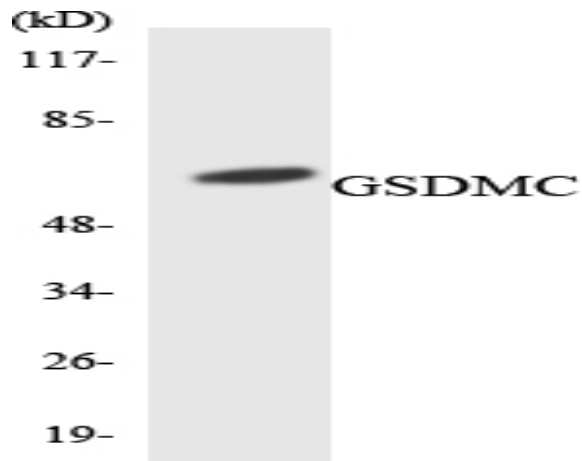
Immunofluorescence analysis of A549. 1,primary Antibody was diluted at 1:200(4°C overnight). 2, Goat Anti Rabbit IgG (H&L) - Alexa Fluor 488 Secondary antibody was diluted at 1:1000(room temperature, 50min).3, Picture B: DAPI(blue) 10min.



Western Blot analysis of various cells using Gasdermin C Polyclonal Antibody diluted at 1:500



Western blot analysis of GSDMC Antibody. The lane on the right is blocked with the GSDMC peptide.



Western blot analysis of the lysates from HepG2 cells using GSDMC antibody.