

Gas6 Polyclonal Antibody

Catalog No :	YT1853
Reactivity :	Human;Rat;Mouse;
Applications :	WB;IHC;IF;ELISA
Target :	Gas6
Fields :	>>EGFR tyrosine kinase inhibitor resistance
Gene Name :	GAS6
Protein Name :	Growth arrest-specific protein 6
Human Gene Id :	2621
Human Swiss Prot No :	Q14393
Mouse Swiss Prot No :	Q61592
Immunogen :	The antiserum was produced against synthesized peptide derived from human GAS6. AA range:291-340
Specificity :	Gas6 Polyclonal Antibody detects endogenous levels of Gas6 protein.
Formulation :	Liquid in PBS containing 50% glycerol, 0.5% BSA and 0.02% sodium azide.
Source :	Polyclonal, Rabbit,IgG
Dilution :	WB 1:500 - 1:2000. IHC 1:100 - 1:300. ELISA: 1:40000.. IF 1:50-200
Purification :	The antibody was affinity-purified from rabbit antiserum by affinity-chromatography using epitope-specific immunogen.
Concentration :	1 mg/ml
Storage Stability :	-15°C to -25°C/1 year(Do not lower than -25°C)

Observed Band : 75kD

Background : This gene encodes a gamma-carboxyglutamic acid (Gla)-containing protein thought to be involved in the stimulation of cell proliferation. This gene is frequently overexpressed in many cancers and has been implicated as an adverse prognostic marker. Elevated protein levels are additionally associated with a variety of disease states, including venous thromboembolic disease, systemic lupus erythematosus, chronic renal failure, and preeclampsia. [provided by RefSeq, Aug 2014],

Function : function:Ligand for tyrosine-protein kinase receptors AXL, TYRO3 and MER whose signaling is implicated in cell growth and survival, cell adhesion and cell migration. Plays a role in thrombosis by amplifying platelet aggregation and secretion in response to known agonists.,PTM:Gamma-carboxyglutamate residues are formed by vitamin K dependent carboxylation. These residues are essential for the binding of calcium.,PTM:Isoform 1 is proteolytically processed after secretion to yield a N-terminal 36 kDa protein and a C-terminal 50 kDa protein including the laminin G-like domains which activates AXL.,similarity:Contains 1 Gla (gamma-carboxy-glutamate) domain.,similarity:Contains 2 laminin G-like domains.,similarity:Contains 4 EGF-like domains.,subunit:Heterodimer and heterotetramer with AXL.,tissue specificity:Plasma. Isoform 1 and isoform 2 are widely expressed. Isoform 1 is the predominant fo

Subcellular Location : Secreted .

Expression : Plasma. Isoform 1 and isoform 2 are widely expressed, isoform 1 being expressed at higher levels than isoform 2 in most tissues. Isoform 2 is the predominant form in spleen.

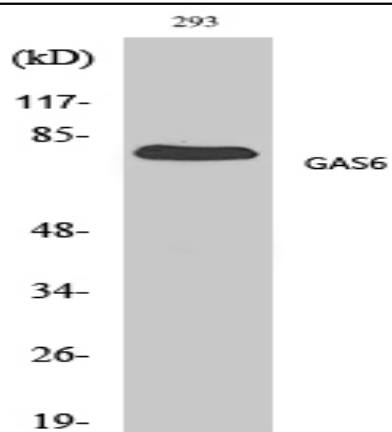
Sort : 6462

No4 : 1

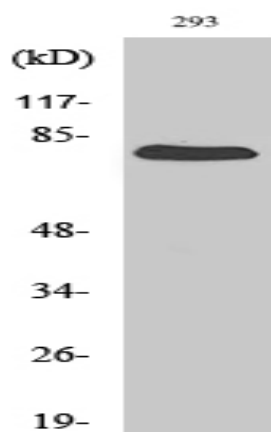
Host : Rabbit

Modifications : Unmodified

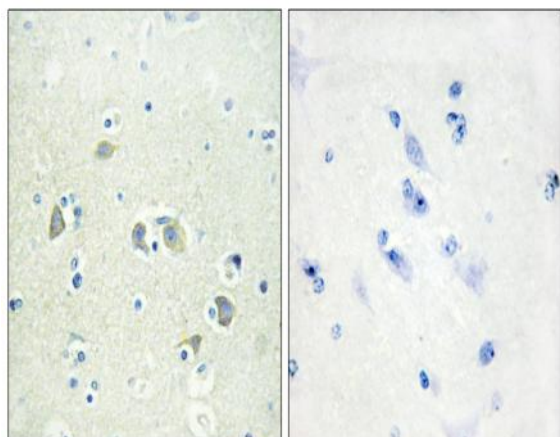
Products Images



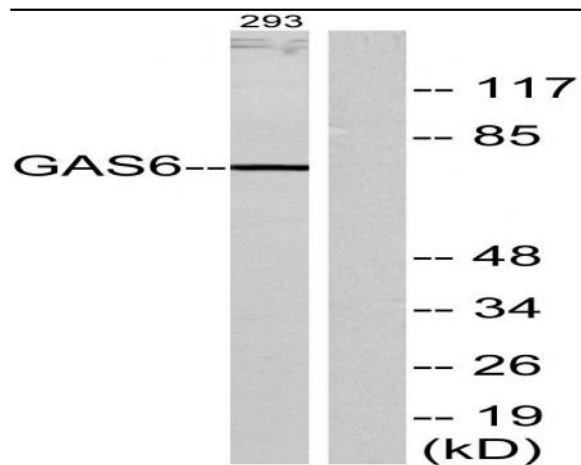
Western Blot analysis of various cells using Gas6 Polyclonal Antibody diluted at 1:500



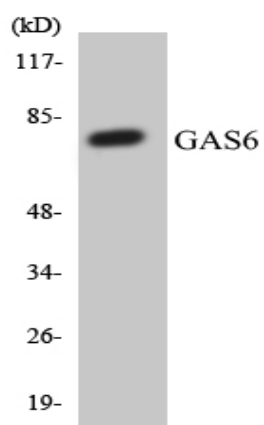
Western Blot analysis of 293 cells using Gas6 Polyclonal Antibody diluted at 1:500



Immunohistochemistry analysis of paraffin-embedded human brain tissue, using GAS6 Antibody. The picture on the right is blocked with the synthesized peptide.



Western blot analysis of lysates from 293 cells, using GAS6 Antibody. The lane on the right is blocked with the synthesized peptide.



Western blot analysis of the lysates from HT-29 cells using GAS6 antibody.