

Enterokinase HC Polyclonal Antibody

Catalog No :	YT1562
Reactivity :	Human;Mouse
Applications :	IHC;IF;ELISA
Target :	Enterokinase HC
Gene Name :	TMPRSS15
Protein Name :	Enteropeptidase
Human Gene Id :	5651
Human Swiss Prot No :	P98073
Mouse Swiss Prot No :	P97435
Immunogen :	The antiserum was produced against synthesized peptide derived from human ENTK. AA range:81-130
Specificity :	Enterokinase HC Polyclonal Antibody detects endogenous levels of Enterokinase HC protein.
Formulation :	Liquid in PBS containing 50% glycerol, 0.5% BSA and 0.02% sodium azide.
Source :	Polyclonal, Rabbit,IgG
Dilution :	IHC 1:100 - 1:300. IF 1:200 - 1:1000. ELISA: 1:20000. Not yet tested in other applications.
Purification :	The antibody was affinity-purified from rabbit antiserum by affinity-chromatography using epitope-specific immunogen.
Concentration :	1 mg/ml
Storage Stability :	-15°C to -25°C/1 year(Do not lower than -25°C)

Molecularweight : 113kD

Background : This gene encodes an enzyme that converts the pancreatic proenzyme trypsinogen to trypsin, which activates other proenzymes including chymotrypsinogen and procarboxypeptidases. The precursor protein is cleaved into two chains that form a heterodimer linked by a disulfide bond. This protein is a member of the trypsin family of peptidases. Mutations in this gene cause enterokinase deficiency, a malabsorption disorder characterized by diarrhea and failure to thrive. [provided by RefSeq, Jul 2008],

Function : catalytic activity:Activation of trypsinogen by selective cleavage of 6-Lys-|-Ile-7 bond.,disease:Defects in PRSS7 are a cause of enterokinase deficiency [MIM:226200]; a life-threatening intestinal malabsorption disorder characterized by diarrhea and failure to thrive.,function:Responsible for initiating activation of pancreatic proteolytic proenzymes (trypsin, chymotrypsin and carboxypeptidase A). It catalyzes the conversion of trypsinogen to trypsin which in turn activates other proenzymes including chymotrypsinogen, procarboxypeptidases, and proelastases.,PTM:The chains are derived from a single precursor that is cleaved by a trypsin-like protease.,similarity:Belongs to the peptidase S1 family.,similarity:Contains 1 MAM domain.,similarity:Contains 1 peptidase S1 domain.,similarity:Contains 1 SEA domain.,similarity:Contains 1 SRCR domain.,similarity:Contains 2 CUB domains.,similarity:C

Subcellular Location : Membrane ; Single-pass type II membrane protein .

Expression : Intestinal brush border.

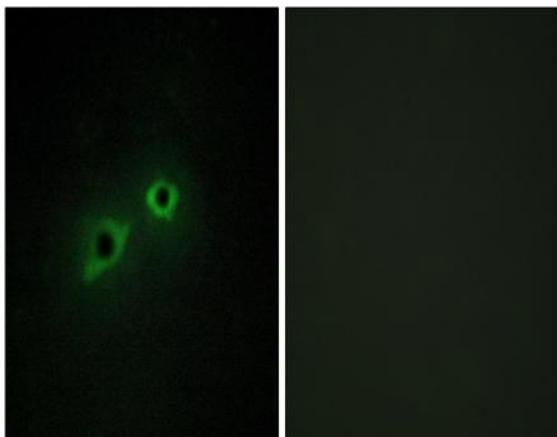
Sort : 5569

No4 : 1

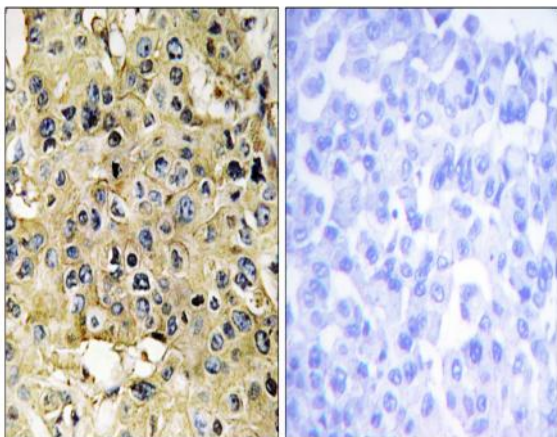
Host : Rabbit

Modifications : Unmodified

Products Images



Immunofluorescence analysis of HepG2 cells, using ENTK Antibody. The picture on the right is blocked with the synthesized peptide.



Immunohistochemistry analysis of paraffin-embedded human breast carcinoma tissue, using ENTK Antibody. The picture on the right is blocked with the synthesized peptide.