

Galectin-9 Polyclonal Antibody

Catalog No :	YT1841
Reactivity :	Human;Mouse;Rat
Applications :	WB;IHC;IF;ELISA
Target :	Galectin-9
Gene Name :	LGALS9
Protein Name :	Galectin-9
Human Gene Id :	3965
Human Swiss Prot No :	O00182
Mouse Gene Id :	16859
Mouse Swiss Prot No :	O08573
Rat Gene Id :	25476
Rat Swiss Prot No :	P97840
Immunogen :	The antiserum was produced against synthesized peptide derived from human LEG9. AA range:51-100
Specificity :	Galectin-9 Polyclonal Antibody detects endogenous levels of Galectin-9 protein.
Formulation :	Liquid in PBS containing 50% glycerol, 0.5% BSA and 0.02% sodium azide.
Source :	Polyclonal, Rabbit,IgG
Dilution :	WB 1:500 - 1:2000. IHC 1:100 - 1:300. IF 1:200 - 1:1000. ELISA: 1:10000. Not yet tested in other applications.
Purification :	The antibody was affinity-purified from rabbit antiserum by affinity-chromatography using epitope-specific immunogen.

Concentration : 1 mg/ml

Storage Stability : -15°C to -25°C/1 year(Do not lower than -25°C)

Observed Band : 40kD

Background : The galectins are a family of beta-galactoside-binding proteins implicated in modulating cell-cell and cell-matrix interactions. The protein encoded by this gene is an S-type lectin. It is overexpressed in Hodgkin's disease tissue and might participate in the interaction between the H&RS cells with their surrounding cells and might thus play a role in the pathogenesis of this disease and/or its associated immunodeficiency. Multiple alternatively spliced transcript variants have been found for this gene. [provided by RefSeq, Jul 2008],

Function : alternative products:Additional isoforms seem to exist, domain:Contains two homologous but distinct carbohydrate-binding domains., function: Binds galactosides. Has high affinity for the Forssman pentasaccharide. May play a role in thymocyte-epithelial interactions relevant to the biology of the thymus. Inhibits cell proliferation. The isoform Short acts as an eosinophil chemoattractant. Is a ligand for HAVCR2/TIM3. Induces T-helper type 1 lymphocyte (Th1) death., online information: Galectin-9, similarity: Contains 2 galectin domains., subcellular location: May also be secreted by a non-classical secretory pathway., subunit: Monomer., tissue specificity: Peripheral blood leukocytes and lymphatic tissues. Overexpressed in Hodgkin's disease tissue.,

Subcellular Location : Cytoplasm . Nucleus . Secreted . May also be secreted by a non-classical secretory pathway (By similarity). Secreted by mesenchymal stromal cells upon IFNG stimulation (PubMed:23817958). .; [Isoform 2]: Secreted .; [Isoform 3]: Secreted .

Expression : Peripheral blood leukocytes and lymphatic tissues. Expressed in lung, liver, breast and kidney with higher levels in tumor endothelial cells than normal endothelium (at protein level) (PubMed:24333696). Expressed in trophoblast cells in decidua and placenta in pregnancy (at protein level) (PubMed:23242525, PubMed:25578313). Isoform 2 is the most abundant isoform expressed in endothelial cells (PubMed:24333696). Upon endothelial cell activation isoform 2 expression decreases while expression of isoform 3 and isoform 5 increases (PubMed:24333696). Isoform 4 decreases in pathological pregnancy (PubMed:23242525).

Tag : orthogonal

Sort : 354

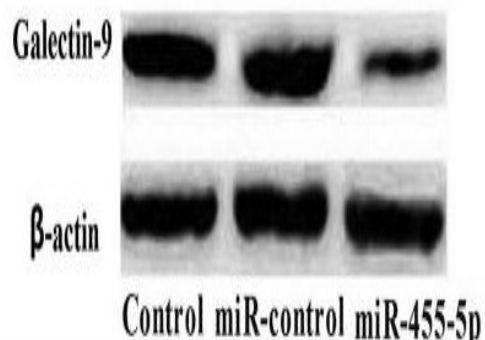
No3 : ab227046

1

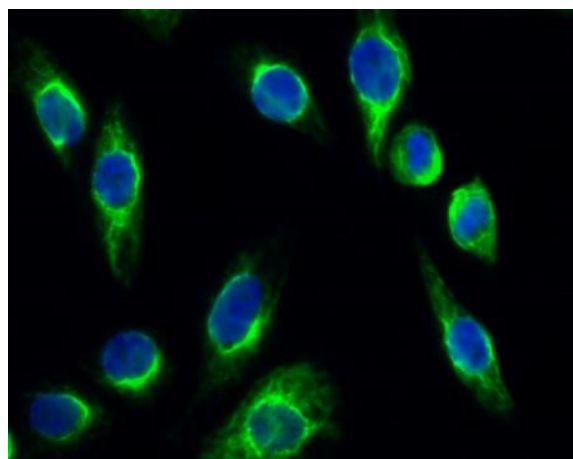
Host: Rabbit

Modifications : Unmodified

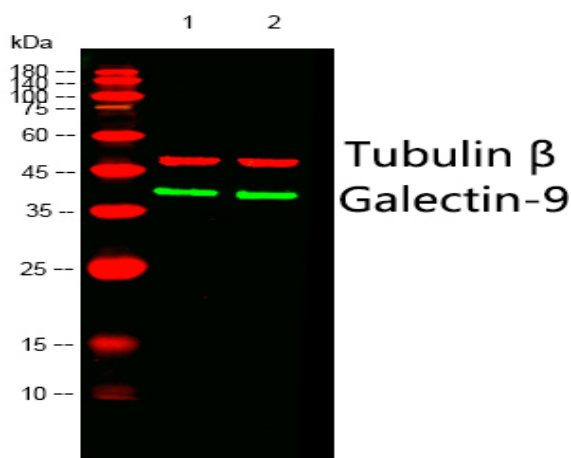
Products Images



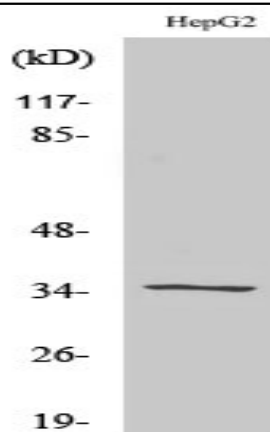
Yang, Qianqian, et al. "miR-455-5p functions as a potential oncogene by targeting galectin-9 in colon cancer." *Oncology letters* 13.3 (2017): 1958-1964.



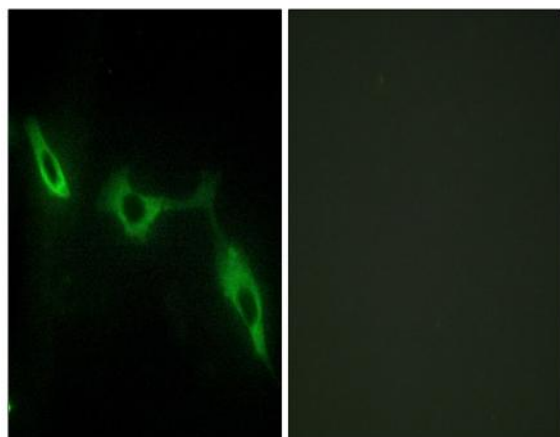
Immunofluorescence analysis of HeLa cell. 1, Galectin-9 Polyclonal Antibody (green) was diluted at 1:200 (4° overnight). 2, Goat Anti Rabbit Alexa Fluor 488 Catalog:RS3211 was diluted at 1:1000 (room temperature, 50min). 3 DAPI (blue) 10min.



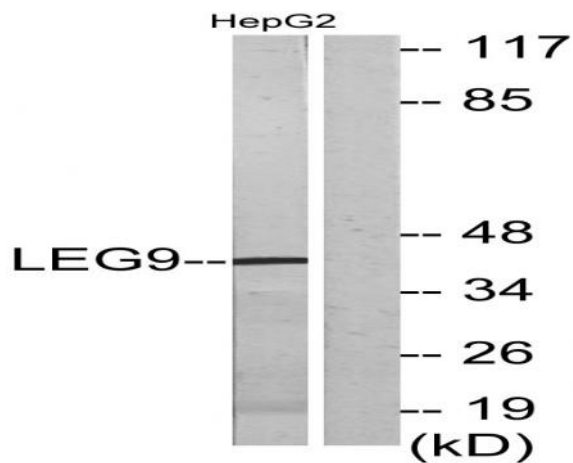
Western blot analysis of lysates from 1) VEC, 2) HepG2 cells, (Green) primary antibody was diluted at 1:1000, 4° over night, Dylight 800 secondary antibody (Immunoway:RS23920) was diluted at 1:10000, 37° 1 hour. (Red) Tubulin β Monoclonal Antibody (5G3) (Immunoway:YM3030) antibody was diluted at 1:5000 as loading control, 4° over night, Dylight 680 secondary antibody (Immunoway:RS23710) was diluted at 1:10000, 37° 1 hour.



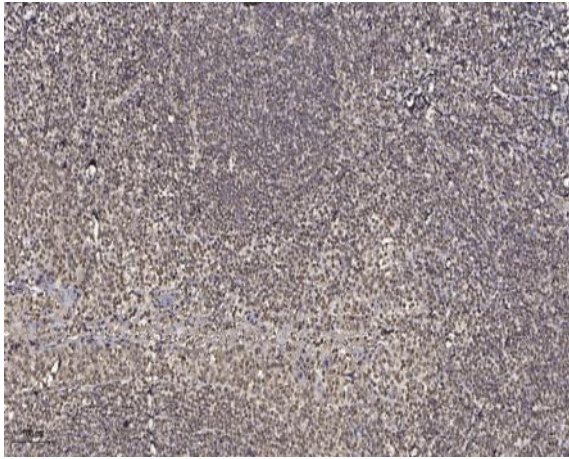
Western Blot analysis of HepG2 cells using Galectin-9 Polyclonal Antibody diluted at 1:1000



Immunofluorescence analysis of NIH/3T3 cells, using LEG9 Antibody. The picture on the right is blocked with the synthesized peptide.



Western blot analysis of lysates from HepG2 cells, using LEG9 Antibody. The lane on the right is blocked with the synthesized peptide.



Immunohistochemical analysis of paraffin-embedded human tonsil. 1, Antibody was diluted at 1:200(4° overnight). 2, Tris-EDTA,pH9.0 was used for antigen retrieval. 3,Secondary antibody was diluted at 1:200(room temperature, 45min).