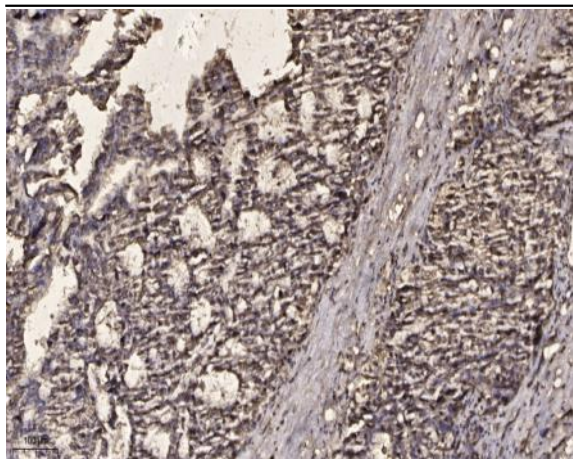


Galectin-7 Polyclonal Antibody

| | |
|------------------------------|-----------------------------------------------------------------------------------------------------------------------|
| Catalog No : | YT1839 |
| Reactivity : | Human;Mouse;Rat |
| Applications : | IHC;IF;WB;ELISA |
| Target : | Galectin-7 |
| Gene Name : | LGALS7 |
| Protein Name : | Galectin-7 |
| Human Gene Id : | 3963/653499 |
| Human Swiss Prot No : | P47929 |
| Mouse Swiss Prot No : | O54974 |
| Rat Gene Id : | 29518 |
| Rat Swiss Prot No : | P97590 |
| Immunogen : | The antiserum was produced against synthesized peptide derived from human LEG7. AA range:41-90 |
| Specificity : | Galectin-7 Polyclonal Antibody detects endogenous levels of Galectin-7 protein. |
| Formulation : | Liquid in PBS containing 50% glycerol, 0.5% BSA and 0.02% sodium azide. |
| Source : | Polyclonal, Rabbit,IgG |
| Dilution : | WB 1:500-2000 IHC 1:100 - 1:300. ELISA: 1:5000.. IF 1:50-200 |
| Purification : | The antibody was affinity-purified from rabbit antiserum by affinity-chromatography using epitope-specific immunogen. |
| Concentration : | 1 mg/ml |

| | |
|-------------------------------|-------------------------------------------------------------------------------------------------------------------------------------------------------------------------------------------------------------------------------------------------------------------------------------------------------------------------------------------------------------------------------------------------------------------------------------------------------------------------|
| Storage Stability : | -15°C to -25°C/1 year(Do not lower than -25°C) |
| Molecularweight : | 16kD |
| Background : | The galectins are a family of beta-galactoside-binding proteins implicated in modulating cell-cell and cell-matrix interactions. Differential and in situ hybridization studies indicate that this lectin is specifically expressed in keratinocytes and found mainly in stratified squamous epithelium. A duplicate copy of this gene (GeneID:653499) is found adjacent to, but on the opposite strand on chromosome 19. [provided by RefSeq, Jul 2008], |
| Function : | function:Could be involved in cell-cell and/or cell-matrix interactions necessary for normal growth control. Pro-apoptotic protein that functions intracellularly upstream of JNK activation and cytochrome c release.,induction:By p53.,online information:Galectin-7,similarity:Contains 1 galectin domain.,subcellular location:May be secreted by a non-classical secretory pathway.,subunit:Monomer.,tissue specificity:Mainly in stratified squamous epithelium., |
| Subcellular Location : | Cytoplasm . Nucleus . Secreted . May be secreted by a non-classical secretory pathway. |
| Expression : | Mainly expressed in stratified squamous epithelium. |
| Sort : | 6414 |
| No4 : | 1 |
| Host : | Rabbit |
| Modifications : | Unmodified |

Products Images



Immunohistochemical analysis of paraffin-embedded human liver cancer. 1, Antibody was diluted at 1:200(4° overnight). 2, Tris-EDTA,pH9.0 was used for antigen retrieval. 3,Secondary antibody was diluted at 1:200(room temperature, 45min).