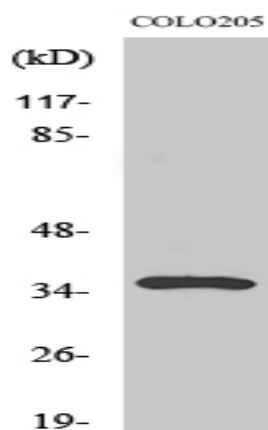


Galectin-4 Polyclonal Antibody

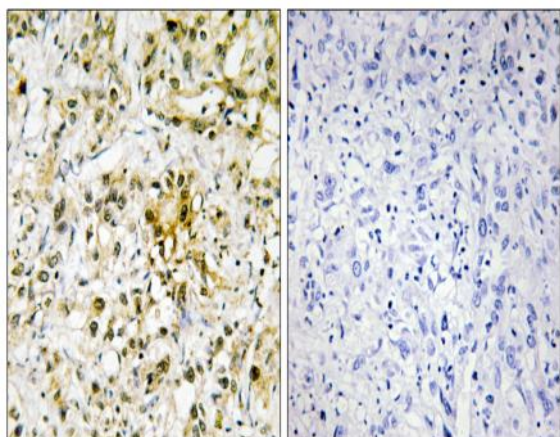
Catalog No :	YT1838
Reactivity :	Human;Rat;Mouse;
Applications :	WB;IHC;IF;ELISA
Target :	Galectin-4
Gene Name :	LGALS4
Protein Name :	Galectin-4
Human Gene Id :	3960
Human Swiss Prot No :	P56470
Mouse Swiss Prot No :	Q8K419
Immunogen :	The antiserum was produced against synthesized peptide derived from human LEG4. AA range:61-110
Specificity :	Galectin-4 Polyclonal Antibody detects endogenous levels of Galectin-4 protein.
Formulation :	Liquid in PBS containing 50% glycerol, 0.5% BSA and 0.02% sodium azide.
Source :	Polyclonal, Rabbit,IgG
Dilution :	WB 1:500 - 1:2000. IHC 1:100 - 1:300. ELISA: 1:20000.. IF 1:50-200
Purification :	The antibody was affinity-purified from rabbit antiserum by affinity-chromatography using epitope-specific immunogen.
Concentration :	1 mg/ml
Storage Stability :	-15°C to -25°C/1 year(Do not lower than -25°C)
Observed Band :	36kD

Background :	The galectins are a family of beta-galactoside-binding proteins implicated in modulating cell-cell and cell-matrix interactions. The expression of this gene is restricted to small intestine, colon, and rectum, and it is underexpressed in colorectal cancer. [provided by RefSeq, Jul 2008],
Function :	domain:Contains two homologous but distinct carbohydrate-binding domains.,function:Galectin that binds lactose and a related range of sugars. May be involved in the assembly of adherens junctions.,online information:Galectin-4,similarity:Contains 2 galectin domains.,subunit:Monomer.,
Subcellular Location :	extracellular space,cytosol,plasma membrane,
Expression :	Colon,Colon carcinoma,Gastric carcinoma,Skin,
Sort :	6413
No4 :	1
Host :	Rabbit
Modifications :	Unmodified

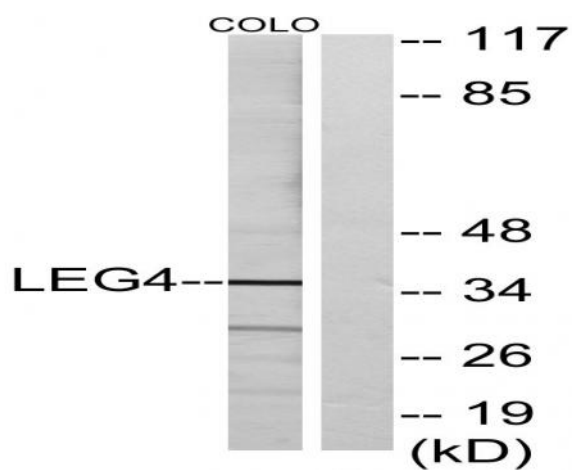
Products Images



Western Blot analysis of various cells using Galectin-4 Polyclonal Antibody



Immunohistochemistry analysis of paraffin-embedded human liver carcinoma tissue, using LEG4 Antibody. The picture on the right is blocked with the synthesized peptide.



Western blot analysis of lysates from COLO cells, using LEG4 Antibody. The lane on the right is blocked with the synthesized peptide.