

## Galectin-2 Polyclonal Antibody

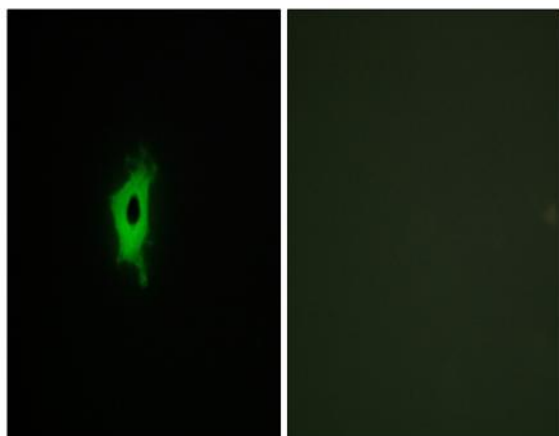
<b>Catalog No :</b>	YT1837
<b>Reactivity :</b>	Human;Mouse;Rat
<b>Applications :</b>	IHC;IF;ELISA
<b>Target :</b>	Galectin-2
<b>Gene Name :</b>	LGALS2
<b>Protein Name :</b>	Galectin-2
<b>Human Gene Id :</b>	3957
<b>Human Swiss Prot No :</b>	P05162
<b>Mouse Gene Id :</b>	107753
<b>Mouse Swiss Prot No :</b>	Q9CQW5
<b>Rat Gene Id :</b>	171134
<b>Rat Swiss Prot No :</b>	Q9Z144
<b>Immunogen :</b>	The antiserum was produced against synthesized peptide derived from human LEG2. AA range:31-80
<b>Specificity :</b>	Galectin-2 Polyclonal Antibody detects endogenous levels of Galectin-2 protein.
<b>Formulation :</b>	Liquid in PBS containing 50% glycerol, 0.5% BSA and 0.02% sodium azide.
<b>Source :</b>	Polyclonal, Rabbit,IgG
<b>Dilution :</b>	IHC 1:100 - 1:300. IF 1:200 - 1:1000. ELISA: 1:5000. Not yet tested in other applications.
<b>Purification :</b>	The antibody was affinity-purified from rabbit antiserum by affinity-chromatography using epitope-specific immunogen.

---

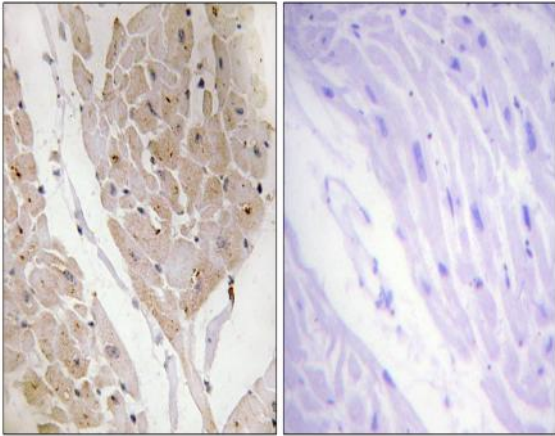
<b>Concentration :</b>	1 mg/ml
<b>Storage Stability :</b>	-15°C to -25°C/1 year(Do not lower than -25°C)
<b>Molecularweight :</b>	15kD
<b>Background :</b>	The protein encoded by this gene is a soluble beta-galactoside binding lectin. The encoded protein is found as a homodimer and can bind to lymphotoxin-alpha. A single nucleotide polymorphism in an intron of this gene can alter the transcriptional level of the protein, with a resultant increased risk of myocardial infarction. [provided by RefSeq, Jul 2008],
<b>Function :</b>	function:This protein binds beta-galactoside. Its physiological function is not yet known.,online information:Galectin-2,similarity:Contains 1 galectin domain.,subunit:Homodimer.,
<b>Expression :</b>	Colon,
<b>Sort :</b>	6404
<b>No4 :</b>	1
<b>Host :</b>	Rabbit
<b>Modifications :</b>	Unmodified

---

## Products Images



Immunofluorescence analysis of COS7 cells, using LEG2 Antibody. The picture on the right is blocked with the synthesized peptide.



Immunohistochemistry analysis of paraffin-embedded human heart tissue, using LEG2 Antibody. The picture on the right is blocked with the synthesized peptide.