

## Emx1 Polyclonal Antibody

<b>Catalog No :</b>	YT1549
<b>Reactivity :</b>	Human;Mouse;Rat
<b>Applications :</b>	WB;ELISA
<b>Target :</b>	Emx1
<b>Gene Name :</b>	EMX1
<b>Protein Name :</b>	Homeobox protein EMX1
<b>Human Gene Id :</b>	2016
<b>Human Swiss Prot No :</b>	Q04741
<b>Mouse Gene Id :</b>	13796
<b>Mouse Swiss Prot No :</b>	Q04742
<b>Immunogen :</b>	The antiserum was produced against synthesized peptide derived from human EMX1. AA range:181-230
<b>Specificity :</b>	Emx1 Polyclonal Antibody detects endogenous levels of Emx1 protein.
<b>Formulation :</b>	Liquid in PBS containing 50% glycerol, 0.5% BSA and 0.02% sodium azide.
<b>Source :</b>	Polyclonal, Rabbit,IgG
<b>Dilution :</b>	WB 1:500 - 1:2000. ELISA: 1:40000. Not yet tested in other applications.
<b>Purification :</b>	The antibody was affinity-purified from rabbit antiserum by affinity-chromatography using epitope-specific immunogen.
<b>Concentration :</b>	1 mg/ml
<b>Storage Stability :</b>	-15°C to -25°C/1 year(Do not lower than -25°C)

**Observed Band :** 28kD

**Background :** function:Transcription factor, which in cooperation with EMX2, acts to generate the boundary between the roof and archipallium in the developing brain. May function in combinations with OTX1/2 to specify cell fates in the developing central nervous system.,similarity:Belongs to the EMX homeobox family.,similarity:Contains 1 homeobox DNA-binding domain.,tissue specificity:Cerebral cortex.,

**Function :** function:Transcription factor, which in cooperation with EMX2, acts to generate the boundary between the roof and archipallium in the developing brain. May function in combinations with OTX1/2 to specify cell fates in the developing central nervous system.,similarity:Belongs to the EMX homeobox family.,similarity:Contains 1 homeobox DNA-binding domain.,tissue specificity:Cerebral cortex.,

**Subcellular Location :** Nucleus . Cytoplasm . Might be shuttling between the nucleus and the cytoplasm.

**Expression :** Cerebral cortex.

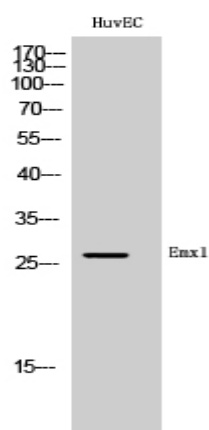
**Sort :** 5543

**No4 :** 1

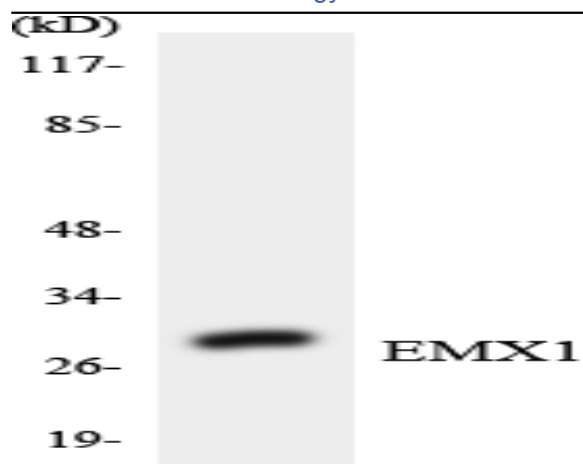
**Host :** Rabbit

**Modifications :** Unmodified

## Products Images



Western Blot analysis of HuvEC cells using Emx1 Polyclonal Antibody cells nucleus extracted by Minute TM Cytoplasmic and Nuclear Fractionation kit (SC-003, Inventbiotech, MN, USA).



Western blot analysis of the lysates from Jurkat cells using EMX1 antibody.