

EMR4 Polyclonal Antibody

Catalog No :	YT1548
Reactivity :	Human;Monkey
Applications :	WB;IF;ELISA
Target :	EMR4
Gene Name :	EMR4P
Protein Name :	Putative EGF-like module-containing mucin-like hormone receptor-like 4
Human Gene Id :	326342
Human Swiss Prot No :	Q86SQ3
Mouse Swiss Prot No :	Q91ZE5
Immunogen :	The antiserum was produced against synthesized peptide derived from human EMR4P. AA range:101-150
Specificity :	EMR4 Polyclonal Antibody detects endogenous levels of EMR4 protein.
Formulation :	Liquid in PBS containing 50% glycerol, 0.5% BSA and 0.02% sodium azide.
Source :	Polyclonal, Rabbit,IgG
Dilution :	WB 1:500 - 1:2000. IF 1:200 - 1:1000. ELISA: 1:20000. Not yet tested in other applications.
Purification :	The antibody was affinity-purified from rabbit antiserum by affinity-chromatography using epitope-specific immunogen.
Concentration :	1 mg/ml
Storage Stability :	-15°C to -25°C/1 year(Do not lower than -25°C)
Observed Band :	55kD

Background : This gene is a member of the EGF-TM7 receptor gene family which is thought to play a role in leukocyte adhesion and migration. In other vertebrates, including nonhuman primates, this gene encodes a protein containing N-terminal EGF domains and a C-terminal transmembrane domain. Sequence evidence for the human gene, however, indicates nucleotide deletion in the genomic sequence would result in frameshift and early termination of translation. A protein expressed by this gene would be soluble rather than expressed on the cell surface. As the encoded protein has not been detected, this gene may represent a transcribed pseudogene. [provided by RefSeq, Aug 2008],

Subcellular Location : [Isoform 1]: Cell membrane ; Multi-pass membrane protein .; [Isoform 2]: Secreted .

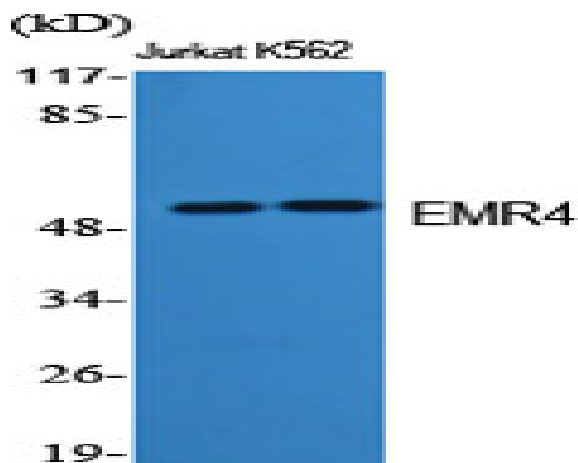
Sort : 5540

No4 : 1

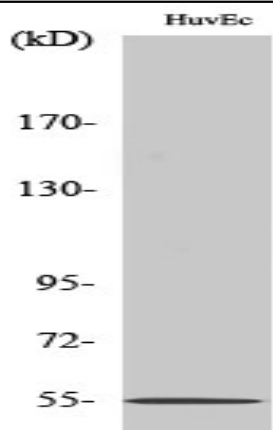
Host : Rabbit

Modifications : Unmodified

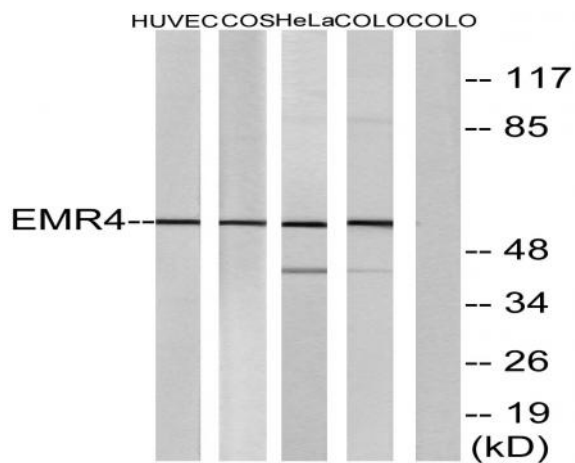
Products Images



Western Blot analysis of various cells using EMR4 Polyclonal Antibody



Western Blot analysis of COLO205 cells using EMR4 Polyclonal Antibody



Western blot analysis of lysates from HUVEC cells, COS7 cells, HeLa cells, and COLO205 cells, using EMR4 Antibody. The lane on the right is blocked with the synthesized peptide.