

## GABAA R $\beta$ 2 Polyclonal Antibody

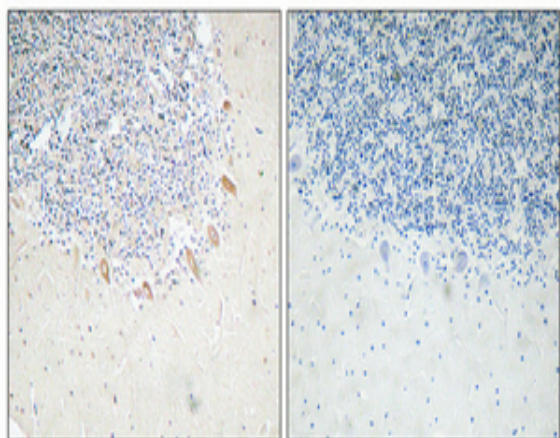
<b>Catalog No :</b>	YT1825
<b>Reactivity :</b>	Human;Mouse;Rat
<b>Applications :</b>	WB;IHC;IF;ELISA
<b>Target :</b>	GABAA R $\beta$ 2
<b>Fields :</b>	>>Neuroactive ligand-receptor interaction;>>Retrograde endocannabinoid signaling;>>Serotonergic synapse;>>GABAergic synapse;>>Morphine addiction;>>Nicotine addiction
<b>Gene Name :</b>	GABRB2
<b>Protein Name :</b>	Gamma-aminobutyric acid receptor subunit beta-2
<b>Human Gene Id :</b>	2561
<b>Human Swiss Prot No :</b>	P47870
<b>Mouse Gene Id :</b>	14401
<b>Mouse Swiss Prot No :</b>	P63137
<b>Rat Gene Id :</b>	25451
<b>Rat Swiss Prot No :</b>	P63138
<b>Immunogen :</b>	The antiserum was produced against synthesized peptide derived from human GABAA R $\beta$ 2. AA range:382-431
<b>Specificity :</b>	GABAA R $\beta$ 2 Polyclonal Antibody detects endogenous levels of GABAA R $\beta$ 2 protein.
<b>Formulation :</b>	Liquid in PBS containing 50% glycerol, 0.5% BSA and 0.02% sodium azide.
<b>Source :</b>	Polyclonal, Rabbit,IgG

---

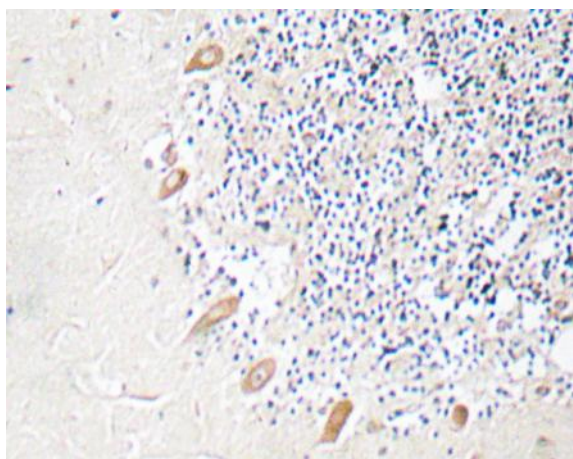
<b>Dilution :</b>	WB 1:500-2000 IHC 1:100 - 1:300. ELISA: 1:40000.. IF 1:50-200
<b>Purification :</b>	The antibody was affinity-purified from rabbit antiserum by affinity-chromatography using epitope-specific immunogen.
<b>Concentration :</b>	1 mg/ml
<b>Storage Stability :</b>	-15°C to -25°C/1 year(Do not lower than -25°C)
<b>Molecularweight :</b>	55kD
<b>Cell Pathway :</b>	Neuroactive ligand-receptor interaction;
<b>Background :</b>	The gamma-aminobutyric acid (GABA) A receptor is a multisubunit chloride channel that mediates the fastest inhibitory synaptic transmission in the central nervous system. This gene encodes GABA A receptor, beta 2 subunit. It is mapped to chromosome 5q34 in a cluster comprised of genes encoding alpha 1 and gamma 2 subunits of the GABA A receptor. Alternative splicing of this gene generates 2 transcript variants, differing by a 114 bp insertion. [provided by RefSeq, Jul 2008],
<b>Function :</b>	function:GABA, the major inhibitory neurotransmitter in the vertebrate brain, mediates neuronal inhibition by binding to the GABA/benzodiazepine receptor and opening an integral chloride channel.,online information:Forbidden fruit - Issue 56 of March 2005,similarity:Belongs to the ligand-gated ionic channel (TC 1.A.9) family.,subunit:Generally pentameric. There are five types of GABA(A) receptor chains: alpha, beta, gamma, delta, and rho. Binds UBQLN1.,
<b>Subcellular Location :</b>	Cell junction, synapse, postsynaptic cell membrane ; Multi-pass membrane protein . Cell membrane ; Multi-pass membrane protein . Cytoplasmic vesicle membrane .
<b>Expression :</b>	Isoform 1 and isoform 2 show reduced expression in schizophrenic brain. Isoform 3 shows increased expression in schizophrenic and bipolar disorder brains while isoform 4 shows reduced expression.
<b>Tag :</b>	hot
<b>Sort :</b>	6377
<b>No4 :</b>	1
<b>Host :</b>	Rabbit
<b>Modifications :</b>	Unmodified

---

## Products Images



Immunohistochemical analysis of paraffin-embedded Human brain. Antibody was diluted at 1:100(4° overnight). High-pressure and temperature Tris-EDTA,pH8.0 was used for antigen retrieval. Negative contrl (right) obtaned from antibody was pre-absorbed by immunogen peptide.



Immunohistochemistry analysis of GABAA R $\beta$ 2 antibody in paraffin-embedded human brain tissue.