

## ELOVL5 Polyclonal Antibody

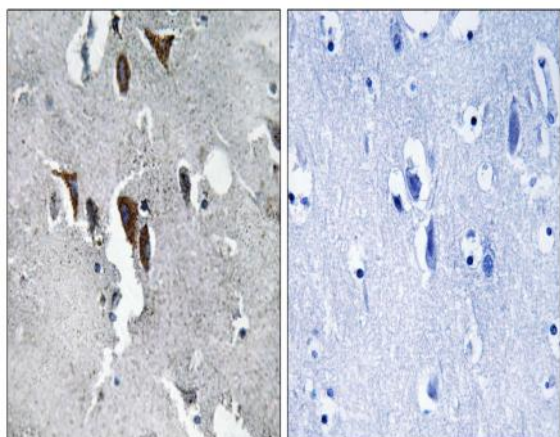
<b>Catalog No :</b>	YT1539
<b>Reactivity :</b>	Human;Rat;Mouse;
<b>Applications :</b>	WB;IHC;IF;ELISA
<b>Target :</b>	ELOVL5
<b>Fields :</b>	>>Fatty acid elongation;>>Biosynthesis of unsaturated fatty acids;>>Metabolic pathways;>>Fatty acid metabolism
<b>Gene Name :</b>	ELOVL5
<b>Protein Name :</b>	Elongation of very long chain fatty acids protein 5
<b>Human Gene Id :</b>	60481
<b>Human Swiss Prot No :</b>	Q9NYP7
<b>Mouse Swiss Prot No :</b>	Q8BHI7
<b>Immunogen :</b>	The antiserum was produced against synthesized peptide derived from human ELOVL5. AA range:250-299
<b>Specificity :</b>	ELOVL5 Polyclonal Antibody detects endogenous levels of ELOVL5 protein.
<b>Formulation :</b>	Liquid in PBS containing 50% glycerol, 0.5% BSA and 0.02% sodium azide.
<b>Source :</b>	Polyclonal, Rabbit,IgG
<b>Dilution :</b>	WB 1:500 - 1:2000. IHC 1:100 - 1:300. ELISA: 1:40000.. IF 1:50-200
<b>Purification :</b>	The antibody was affinity-purified from rabbit antiserum by affinity-chromatography using epitope-specific immunogen.
<b>Concentration :</b>	1 mg/ml
<b>Storage Stability :</b>	-15°C to -25°C/1 year(Do not lower than -25°C)

---

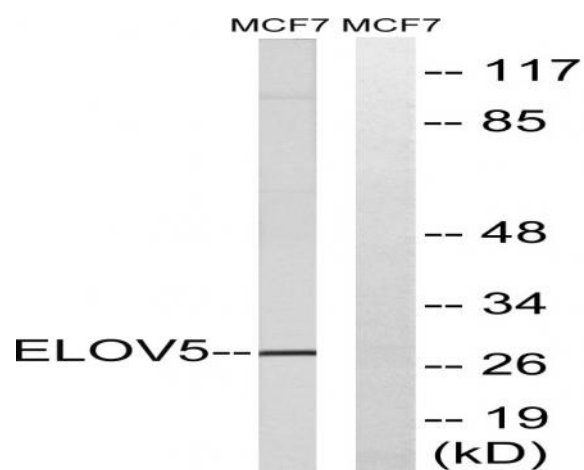
<b>Observed Band :</b>	28kD
<b>Cell Pathway :</b>	Biosynthesis of unsaturated fatty acids;
<b>Background :</b>	This gene belongs to the ELO family. It is highly expressed in the adrenal gland and testis, and encodes a multi-pass membrane protein that is localized in the endoplasmic reticulum. This protein is involved in the elongation of long-chain polyunsaturated fatty acids. Mutations in this gene have been associated with spinocerebellar ataxia-38 (SCA38). Alternatively spliced transcript variants have been found for this gene. [provided by RefSeq, Sep 2014],
<b>Function :</b>	function:May be involved in the elongation of long-chain polyunsaturated fatty acids (PUFAs).,similarity:Belongs to the ELO family.,tissue specificity:Highly expressed in the adrenal gland and testis. Weekly expressed in prostate, lung and brain.,
<b>Subcellular Location :</b>	Endoplasmic reticulum membrane ; Multi-pass membrane protein . Cell projection, dendrite . In Purkinje cells, the protein localizes to the soma and proximal portion of the dendritic tree. .
<b>Expression :</b>	Ubiquitous. Highly expressed in the adrenal gland and testis. Weakly expressed in prostate, lung and brain. Expressed in the cerebellum.
<b>Sort :</b>	5524
<b>No4 :</b>	1
<b>Host :</b>	Rabbit
<b>Modifications :</b>	Unmodified

---

## Products Images



Immunohistochemistry analysis of paraffin-embedded human brain tissue, using ELOVL5 Antibody. The picture on the right is blocked with the synthesized peptide.



Western blot analysis of lysates from MCF-7 cells, using ELOVL5 Antibody. The lane on the right is blocked with the synthesized peptide.