

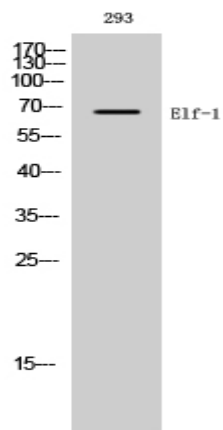
## Elf-1 Polyclonal Antibody

<b>Catalog No :</b>	YT1523
<b>Reactivity :</b>	Human
<b>Applications :</b>	WB;IHC;IF;ELISA
<b>Target :</b>	Elf-1
<b>Gene Name :</b>	ELF1
<b>Protein Name :</b>	ETS-related transcription factor Elf-1
<b>Human Gene Id :</b>	1997
<b>Human Swiss Prot No :</b>	P32519
<b>Mouse Swiss Prot No :</b>	Q60775
<b>Immunogen :</b>	The antiserum was produced against synthesized peptide derived from human ELF1. AA range:537-586
<b>Specificity :</b>	Elf-1 Polyclonal Antibody detects endogenous levels of Elf-1 protein.
<b>Formulation :</b>	Liquid in PBS containing 50% glycerol, 0.5% BSA and 0.02% sodium azide.
<b>Source :</b>	Polyclonal, Rabbit,IgG
<b>Dilution :</b>	WB 1:500 - 1:2000. IHC 1:100 - 1:300. IF 1:200 - 1:1000. ELISA: 1:20000. Not yet tested in other applications.
<b>Purification :</b>	The antibody was affinity-purified from rabbit antiserum by affinity-chromatography using epitope-specific immunogen.
<b>Concentration :</b>	1 mg/ml
<b>Storage Stability :</b>	-15°C to -25°C/1 year(Do not lower than -25°C)
<b>Observed Band :</b>	67kD

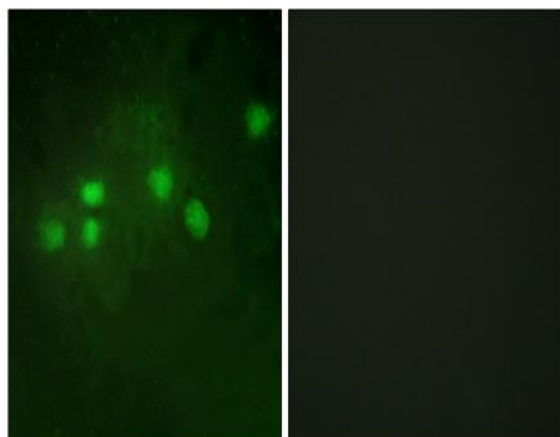
<b>Background :</b>	This gene encodes an E26 transformation-specific related transcription factor. The encoded protein is primarily expressed in lymphoid cells and acts as both an enhancer and a repressor to regulate transcription of various genes. Alternative splicing results in multiple transcript variants. [provided by RefSeq, Feb 2009],
<b>Function :</b>	function:Transcription factor that activates the LYN and BLK promoters. Appears to be required for the T-cell-receptor-mediated trans activation of HIV-2 gene expression. Binds specifically to two purine-rich motifs in the HIV-2 enhancer.,PTM:Phosphorylated upon DNA damage, probably by ATM or ATR.,similarity:Belongs to the ETS family.,similarity:Contains 1 ETS DNA-binding domain.,subunit:Binds to the underphosphorylated form of RB. May interact with other transcription factors in order to regulate specific genes. Interacts with RUNX1.,tissue specificity:In fetal tissue, it is highly expressed in heart, lung liver and kidney, and weakly expressed in brain. In adult, it is highly expressed in pancreas, spleen, thymus and peripheral blood leukocytes, expressed at moderate levels in heart, placenta, lung, liver, skeletal muscle, kidney, prostate, ovary, small intestine and colon, and weakly
<b>Subcellular Location :</b>	Nucleus.
<b>Expression :</b>	In fetal tissues, it is highly expressed in heart, lung liver and kidney, and weakly expressed in brain. In adult, it is highly expressed in pancreas, spleen, thymus and peripheral blood leukocytes, expressed at moderate levels in heart, placenta, lung, liver, skeletal muscle, kidney, prostate, ovary, small intestine and colon, and weakly expressed in brain and testis.
<b>Sort :</b>	5498
<b>No4 :</b>	1
<b>Host :</b>	Rabbit
<b>Modifications :</b>	Unmodified

---

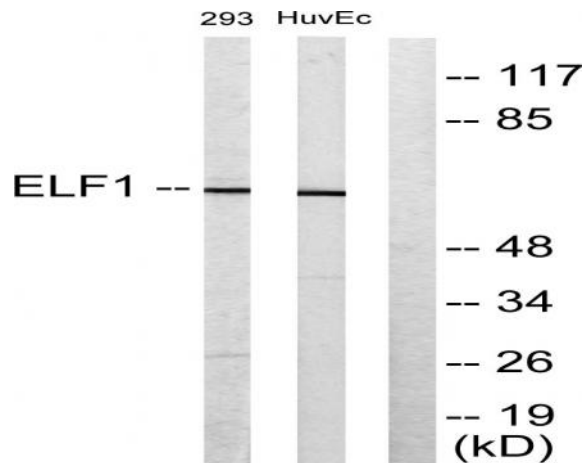
## Products Images



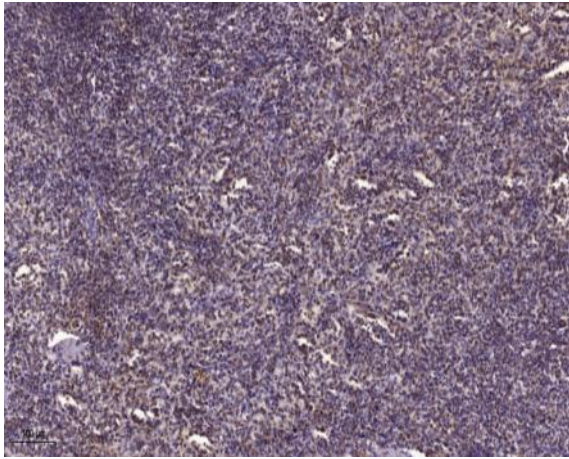
Western Blot analysis of 293 cells using Elf-1 Polyclonal Antibody diluted at 1:1000



Immunofluorescence analysis of A549 cells, using ELF1 Antibody. The picture on the right is blocked with the synthesized peptide.



Western blot analysis of lysates from 293 and HUVEC cells, using ELF1 Antibody. The lane on the right is blocked with the synthesized peptide.



Immunohistochemical analysis of paraffin-embedded human spleen. 1, Tris-EDTA, pH 9.0 was used for antigen retrieval. 2 Antibody was diluted at 1:200 (4° overnight). 3, Secondary antibody was diluted at 1:200 (room temperature, 45 min).