

Fyn Polyclonal Antibody

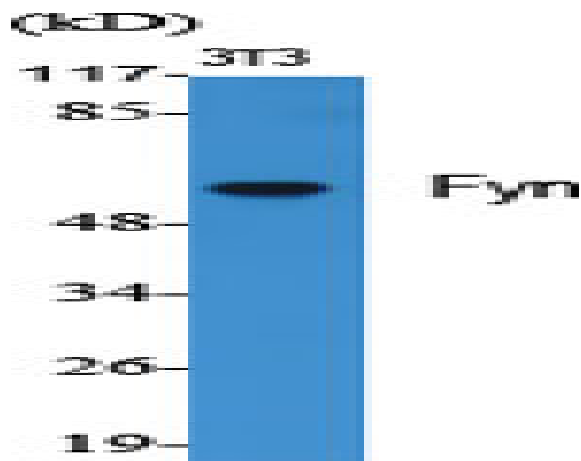
Catalog No :	YT1806
Reactivity :	Human;Mouse;Rat
Applications :	WB;IHC;IF;ELISA
Target :	Fyn
Fields :	>>Sphingolipid signaling pathway;>>Phospholipase D signaling pathway;>>Axon guidance;>>Osteoclast differentiation;>>Focal adhesion;>>Adherens junction;>>Platelet activation;>>Natural killer cell mediated cytotoxicity;>>T cell receptor signaling pathway;>>Fc epsilon RI signaling pathway;>>Cholinergic synapse;>>Prion disease;>>Pathogenic Escherichia coli infection;>>Viral myocarditis
Gene Name :	FYN
Protein Name :	Tyrosine-protein kinase Fyn
Human Gene Id :	2534
Human Swiss Prot No :	P06241
Mouse Gene Id :	14360
Mouse Swiss Prot No :	P39688
Rat Gene Id :	25150
Rat Swiss Prot No :	Q62844
Immunogen :	The antiserum was produced against synthesized peptide derived from human Fyn. AA range:488-537
Specificity :	Fyn Polyclonal Antibody detects endogenous levels of Fyn protein.
Formulation :	Liquid in PBS containing 50% glycerol, 0.5% BSA and 0.02% sodium azide.

Source :	Polyclonal, Rabbit,IgG
Dilution :	WB 1:500 - 1:2000. ELISA: 1:5000.. IF 1:50-200
Purification :	The antibody was affinity-purified from rabbit antiserum by affinity-chromatography using epitope-specific immunogen.
Concentration :	1 mg/ml
Storage Stability :	-15°C to -25°C/1 year(Do not lower than -25°C)
Observed Band :	60kD
Cell Pathway :	Axon guidance;Focal adhesion;Adherens_Junction;Natural killer cell mediated cytotoxicity;T_Cell_Receptor;Fc epsilon RI;Prion diseases;Pathogenic Escherichia coli infection;Viral myocarditis;
Background :	This gene is a member of the protein-tyrosine kinase oncogene family. It encodes a membrane-associated tyrosine kinase that has been implicated in the control of cell growth. The protein associates with the p85 subunit of phosphatidylinositol 3-kinase and interacts with the fyn-binding protein. Alternatively spliced transcript variants encoding distinct isoforms exist. [provided by RefSeq, Jul 2008],
Function :	catalytic activity:ATP + a [protein]-L-tyrosine = ADP + a [protein]-L-tyrosine phosphate.,cofactor:Manganese.,enzyme regulation:Inhibited by phosphorylation of Tyr-531 by leukocyte common antigen and activated by dephosphorylation of this site.,function:Implicated in the control of cell growth. Plays a role in the regulation of intracellular calcium levels, with isoform 2 showing the greater ability to mobilize cytoplasmic calcium in comparison to isoform 1. Required in brain development and mature brain function with important roles in the regulation of axon growth, axon guidance, and neurite extension. Blocks axon outgrowth and attraction induced by NTN1 by phosphorylating its receptor DDC.,similarity:Belongs to the protein kinase superfamily. Tyr protein kinase family.,similarity:Belongs to the protein kinase superfamily. Tyr protein kinase family. SRC subfamily.,similarity:Contains 1
Subcellular Location :	Cytoplasm. Nucleus. Cell membrane. Present and active in lipid rafts. Palmitoylation is crucial for proper trafficking.
Expression :	Isoform 1 is highly expressed in the brain. Isoform 2 is expressed in cells of hemopoietic lineages, especially T-lymphocytes.
Sort :	6337
No4 :	1

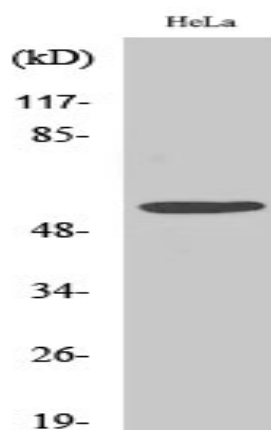
Host : Rabbit

Modifications : Unmodified

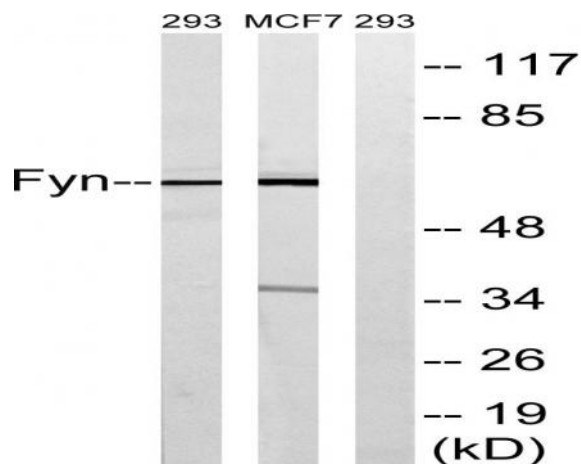
Products Images



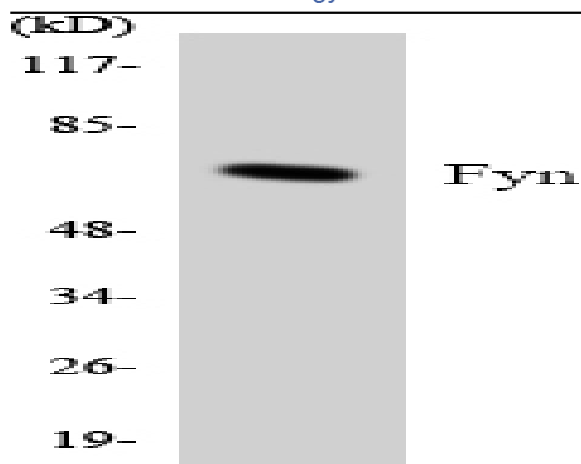
Western blot analysis of various cells using Fyn Polyclonal Antibody diluted at 1:2000



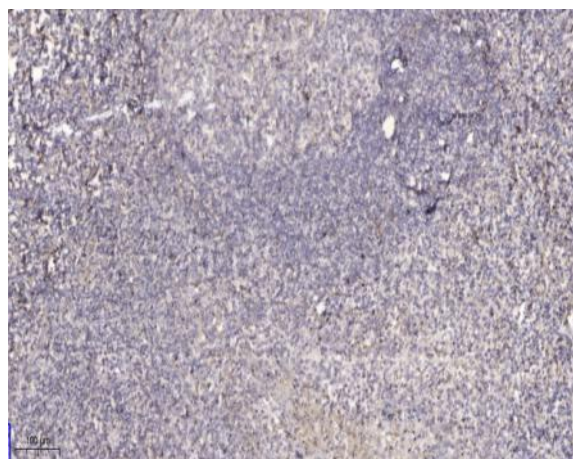
Western blot analysis of COLO205 cells using Fyn Polyclonal Antibody diluted at 1:2000



Western blot analysis of lysates from MCF-7 and 293 cells, using Fyn Antibody. The lane on the right is blocked with the synthesized peptide.



Western blot analysis of the lysates from K562 cells using Fyn antibody.



Immunohistochemical analysis of paraffin-embedded human tonsil. 1, Antibody was diluted at 1:200(4° overnight). 2, Tris-EDTA,pH9.0 was used for antigen retrieval. 3,Secondary antibody was diluted at 1:200(room temperature, 45min).