

## eIF4B Polyclonal Antibody

<b>Catalog No :</b>	YT1515
<b>Reactivity :</b>	Human;Mouse
<b>Applications :</b>	WB;IHC;IF;ELISA
<b>Target :</b>	eIF4B
<b>Fields :</b>	>>mTOR signaling pathway;>>PI3K-Akt signaling pathway;>>Proteoglycans in cancer
<b>Gene Name :</b>	EIF4B
<b>Protein Name :</b>	Eukaryotic translation initiation factor 4B
<b>Human Gene Id :</b>	1975
<b>Human Swiss Prot No :</b>	P23588
<b>Mouse Gene Id :</b>	75705
<b>Mouse Swiss Prot No :</b>	Q8BGD9
<b>Immunogen :</b>	The antiserum was produced against synthesized peptide derived from human eIF4B. AA range:388-437
<b>Specificity :</b>	eIF4B Polyclonal Antibody detects endogenous levels of eIF4B protein.
<b>Formulation :</b>	Liquid in PBS containing 50% glycerol, 0.5% BSA and 0.02% sodium azide.
<b>Source :</b>	Polyclonal, Rabbit,IgG
<b>Dilution :</b>	WB 1:500 - 1:2000. IHC 1:100 - 1:300. IF 1:200 - 1:1000. ELISA: 1:5000. Not yet tested in other applications.
<b>Purification :</b>	The antibody was affinity-purified from rabbit antiserum by affinity-chromatography using epitope-specific immunogen.

---

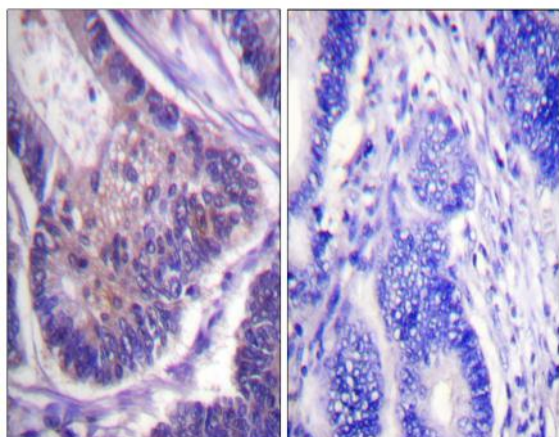
<b>Concentration :</b>	1 mg/ml
<b>Storage Stability :</b>	-15°C to -25°C/1 year(Do not lower than -25°C)
<b>Observed Band :</b>	70kD
<b>Cell Pathway :</b>	mTOR;
<b>Background :</b>	function:Required for the binding of mRNA to ribosomes. Functions in close association with EIF4-F and EIF4-A. Binds near the 5'-terminal cap of mRNA in presence of EIF-4F and ATP. Promotes the ATPase activity and the ATP-dependent RNA unwinding activity of both EIF4-A and EIF4-F.,similarity:Contains 1 RRM (RNA recognition motif) domain.,subunit:Self-associates and interacts with EIF3 p170 subunit.,
<b>Function :</b>	function:Required for the binding of mRNA to ribosomes. Functions in close association with EIF4-F and EIF4-A. Binds near the 5'-terminal cap of mRNA in presence of EIF-4F and ATP. Promotes the ATPase activity and the ATP-dependent RNA unwinding activity of both EIF4-A and EIF4-F.,similarity:Contains 1 RRM (RNA recognition motif) domain.,subunit:Self-associates and interacts with EIF3 p170 subunit.,
<b>Subcellular Location :</b>	cytosol,polysome,eukaryotic translation initiation factor 4F complex,dendrite,neuronal cell body,
<b>Expression :</b>	Adipose tissue,Brain,Cervix carcinoma,Epithelium,Liver,Lung
<b>Sort :</b>	5479
<b>No4 :</b>	1
<b>Host :</b>	Rabbit
<b>Modifications :</b>	Unmodified

---

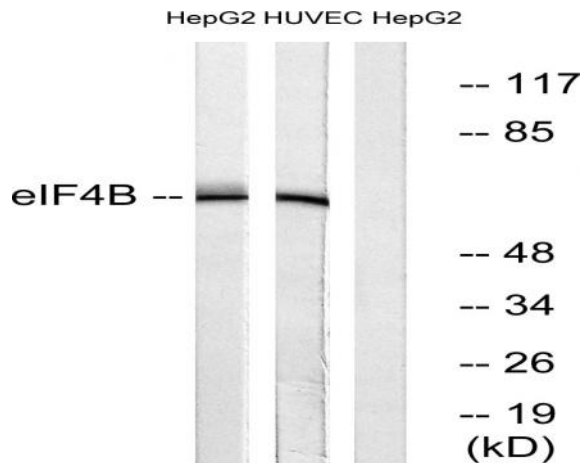
## Products Images



Immunofluorescence analysis of A549 cells, using eIF4B Antibody. The picture on the right is blocked with the synthesized peptide.



Immunohistochemistry analysis of paraffin-embedded human colon carcinoma tissue, using eIF4B Antibody. The picture on the right is blocked with the synthesized peptide.



Western blot analysis of lysates from HepG2 and HUVEC cells, using eIF4B Antibody. The lane on the right is blocked with the synthesized peptide.