

FR- α Polyclonal Antibody

Catalog No :	YT1794
Reactivity :	Human;Mouse;Rat
Applications :	WB;ELISA
Target :	FR- α
Fields :	>>Antifolate resistance;>>Endocytosis
Gene Name :	FOLR1
Protein Name :	Folate receptor alpha
Human Gene Id :	2348
Human Swiss Prot No :	P15328
Mouse Swiss Prot No :	P35846
Immunogen :	The antiserum was produced against synthesized peptide derived from human FOLR1. AA range:41-90
Specificity :	FR- α Polyclonal Antibody detects endogenous levels of FR- α protein.
Formulation :	Liquid in PBS containing 50% glycerol, 0.5% BSA and 0.02% sodium azide.
Source :	Polyclonal, Rabbit,IgG
Dilution :	WB 1:500 - 1:2000. ELISA: 1:5000. Not yet tested in other applications.
Purification :	The antibody was affinity-purified from rabbit antiserum by affinity-chromatography using epitope-specific immunogen.
Concentration :	1 mg/ml
Storage Stability :	-15°C to -25°C/1 year(Do not lower than -25°C)

Observed Band : 34kD

Background : The protein encoded by this gene is a member of the folate receptor family. Members of this gene family bind folic acid and its reduced derivatives, and transport 5-methyltetrahydrofolate into cells. This gene product is a secreted protein that either anchors to membranes via a glycosyl-phosphatidylinositol linkage or exists in a soluble form. Mutations in this gene have been associated with neurodegeneration due to cerebral folate transport deficiency. Due to the presence of two promoters, multiple transcription start sites, and alternative splicing, multiple transcript variants encoding the same protein have been found for this gene. [provided by RefSeq, Oct 2009],

Function : function: Binds to folate and reduced folic acid derivatives and mediates delivery of 5-methyltetrahydrofolate to the interior of cells.,PTM: Eight disulfide bonds are present.,PTM: The secreted form is derived from the membrane-bound form either by cleavage of the GPI anchor, or/and by proteolysis catalyzed by a metalloprotease.,similarity: Belongs to the folate receptor family.,tissue specificity: Exclusively expressed in tissues of epithelial origin. Expression is increased in malignant tissues. Expressed in kidney, lung and cerebellum.,

Subcellular Location : Cell membrane ; Lipid-anchor, GPI-anchor . Apical cell membrane ; Lipid-anchor, GPI-anchor . Basolateral cell membrane ; Lipid-anchor, GPI-like-anchor . Secreted . Cytoplasmic vesicle . Cytoplasmic vesicle, clathrin-coated vesicle . Endosome . Endocytosed into cytoplasmic vesicles and then recycled to the cell membrane. .

Expression : Primarily expressed in tissues of epithelial origin. Expression is increased in malignant tissues. Expressed in kidney, lung and cerebellum. Detected in placenta and thymus epithelium.

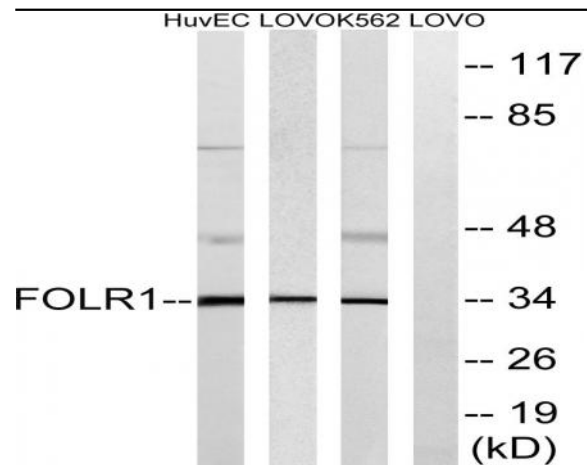
Sort : 6311

No4 : 1

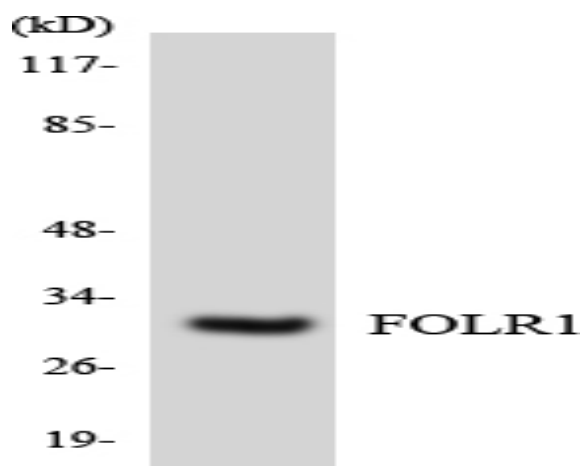
Host : Rabbit

Modifications : Unmodified

Products Images



Western blot analysis of lysates from K562, LOVO, and HUVEC cells, using FOLR1 Antibody. The lane on the right is blocked with the synthesized peptide.



Western blot analysis of the lysates from HepG2 cells using FOLR1 antibody.