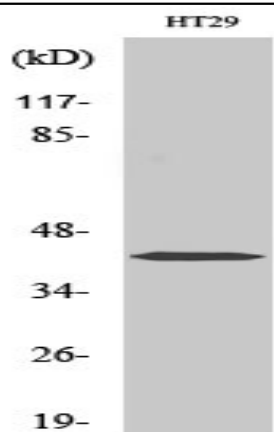


Fra-1 Polyclonal Antibody

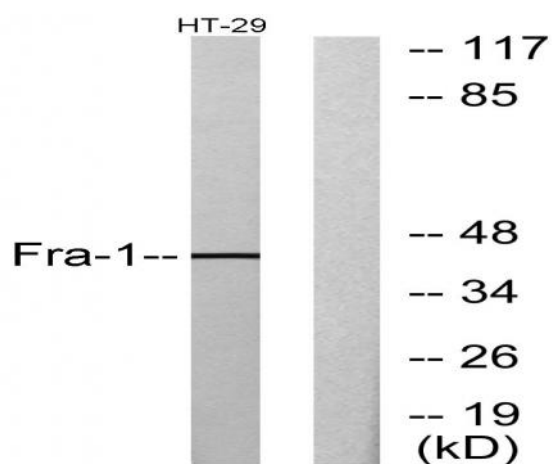
Catalog No :	YT1772
Reactivity :	Human;Mouse;Rat
Applications :	WB;IHC;IF;ELISA
Target :	FRA1
Fields :	>>Wnt signaling pathway;>>Osteoclast differentiation;>>IL-17 signaling pathway;>>Human T-cell leukemia virus 1 infection
Gene Name :	FOSL1
Protein Name :	Fos-related antigen 1
Human Gene Id :	8061
Human Swiss Prot No :	P15407
Mouse Gene Id :	14283
Mouse Swiss Prot No :	P48755
Rat Gene Id :	25445
Rat Swiss Prot No :	P10158
Immunogen :	The antiserum was produced against synthesized peptide derived from human Fra-1. AA range:101-150
Specificity :	Fra-1 Polyclonal Antibody detects endogenous levels of Fra-1 protein.
Formulation :	Liquid in PBS containing 50% glycerol, 0.5% BSA and 0.02% sodium azide.
Source :	Polyclonal, Rabbit,IgG
Dilution :	WB 1:500 - 1:2000. IHC 1:100 - 1:300. ELISA: 1:20000.. IF 1:50-200

Purification :	The antibody was affinity-purified from rabbit antiserum by affinity-chromatography using epitope-specific immunogen.
Concentration :	1 mg/ml
Storage Stability :	-15°C to -25°C/1 year(Do not lower than -25°C)
Observed Band :	43kD
Cell Pathway :	WNT;WNT-T CELL
Background :	The Fos gene family consists of 4 members: FOS, FOSB, FOSL1, and FOSL2. These genes encode leucine zipper proteins that can dimerize with proteins of the JUN family, thereby forming the transcription factor complex AP-1. As such, the FOS proteins have been implicated as regulators of cell proliferation, differentiation, and transformation. Several transcript variants encoding different isoforms have been found for this gene. [provided by RefSeq, Jul 2014],
Function :	similarity:Belongs to the bZIP family.,similarity:Belongs to the bZIP family. Fos subfamily.,similarity:Contains 1 bZIP domain.,subunit:Heterodimer.,
Subcellular Location :	Nucleus .
Expression :	Blood,Endothelial cell,Kidney,Skin,
Tag :	orthogonal
Sort :	324
No4 :	1
Host :	Rabbit
Modifications :	Unmodified

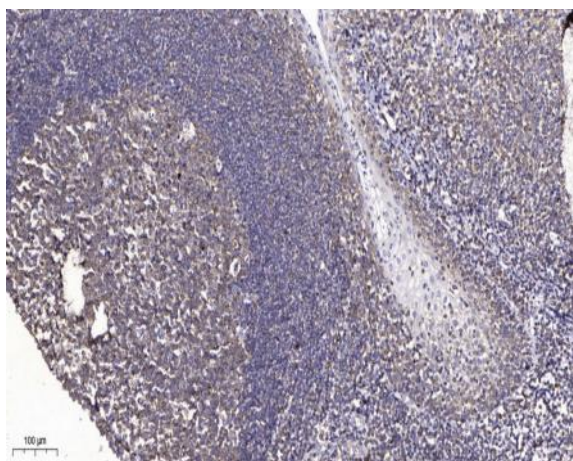
Products Images



Western Blot analysis of various cells using Fra-1 Polyclonal Antibody diluted at 1:2000



Western blot analysis of lysates from HT-29 cells, using Fra-1 Antibody. The lane on the right is blocked with the synthesized peptide.



Immunohistochemical analysis of paraffin-embedded human tonsil. 1, Antibody was diluted at 1:200(4° overnight). 2, Tris-EDTA,pH9.0 was used for antigen retrieval. 3,Secondary antibody was diluted at 1:200(room temperature, 45min).