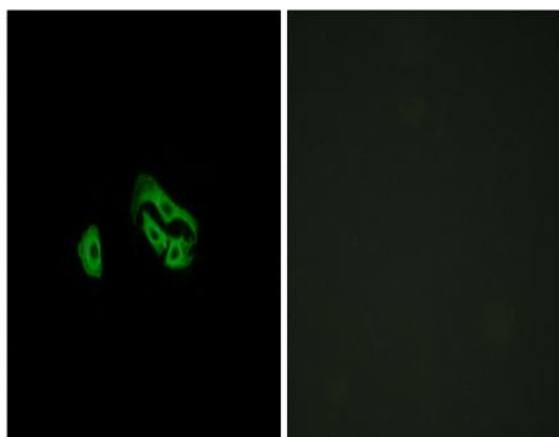


FPRL2 Polyclonal Antibody

Catalog No :	YT1771
Reactivity :	Human;Rat;Mouse;
Applications :	IF;ELISA
Target :	FPRL2
Fields :	>>Neuroactive ligand-receptor interaction;>>Neutrophil extracellular trap formation;>>Staphylococcus aureus infection
Gene Name :	FPR3
Protein Name :	N-formyl peptide receptor 3
Human Gene Id :	2359
Human Swiss Prot No :	P25089
Immunogen :	The antiserum was produced against synthesized peptide derived from human FPRL2. AA range:304-353
Specificity :	FPRL2 Polyclonal Antibody detects endogenous levels of FPRL2 protein.
Formulation :	Liquid in PBS containing 50% glycerol, 0.5% BSA and 0.02% sodium azide.
Source :	Polyclonal, Rabbit,IgG
Dilution :	IF 1:200 - 1:1000. ELISA: 1:5000. Not yet tested in other applications.
Purification :	The antibody was affinity-purified from rabbit antiserum by affinity-chromatography using epitope-specific immunogen.
Concentration :	1 mg/ml
Storage Stability :	-15°C to -25°C/1 year(Do not lower than -25°C)
Molecularweight :	40kD

Cell Pathway :	Neuroactive ligand-receptor interaction;
Background :	function:Low affinity receptor for N-formyl-methionyl peptides, which are powerful neutrophils chemotactic factors. Binding of FMLP to the receptor causes activation of neutrophils. This response is mediated via a G-protein that activates a phosphatidylinositol-calcium second messenger system.,similarity:Belongs to the G-protein coupled receptor 1 family.,
Function :	function:Low affinity receptor for N-formyl-methionyl peptides, which are powerful neutrophils chemotactic factors. Binding of FMLP to the receptor causes activation of neutrophils. This response is mediated via a G-protein that activates a phosphatidylinositol-calcium second messenger system.,similarity:Belongs to the G-protein coupled receptor 1 family.,
Subcellular Location :	Cell membrane; Multi-pass membrane protein.
Expression :	Detected in various tissues with highest expression in lung.
Sort :	6282
No4 :	1
Host :	Rabbit
Modifications :	Unmodified

Products Images



Immunofluorescence analysis of HeLa cells, using FPRL2 Antibody. The picture on the right is blocked with the synthesized peptide.