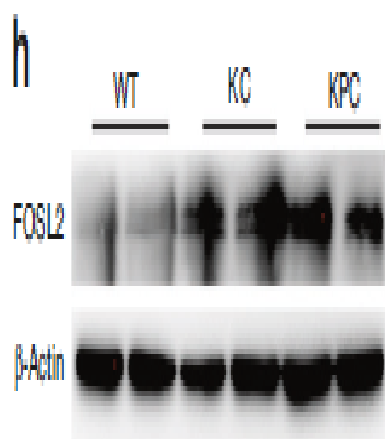


FOSL2 Polyclonal Antibody

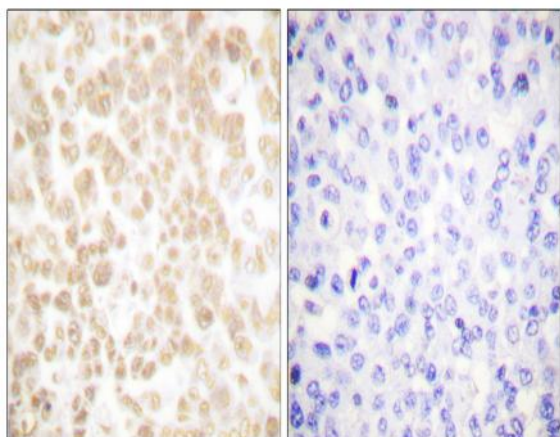
Catalog No :	YT1739
Reactivity :	Human;Mouse;Rat
Applications :	WB;IHC;IF;ELISA
Target :	FOSL2
Fields :	>>Osteoclast differentiation
Gene Name :	FOSL2
Protein Name :	Fos-related antigen 2
Human Gene Id :	2355
Human Swiss Prot No :	P15408
Mouse Gene Id :	14284
Mouse Swiss Prot No :	P47930
Rat Gene Id :	25446
Rat Swiss Prot No :	P51145
Immunogen :	The antiserum was produced against synthesized peptide derived from human Fra-2. AA range:271-320
Specificity :	FOSL2 Polyclonal Antibody detects endogenous levels of FOSL2 protein.
Formulation :	Liquid in PBS containing 50% glycerol, 0.5% BSA and 0.02% sodium azide.
Source :	Polyclonal, Rabbit,IgG
Dilution :	WB 1:500 - 1:2000. IHC 1:100 - 1:300. ELISA: 1:10000.. IF 1:50-200

Purification :	The antibody was affinity-purified from rabbit antiserum by affinity-chromatography using epitope-specific immunogen.
Concentration :	1 mg/ml
Storage Stability :	-15°C to -25°C/1 year(Do not lower than -25°C)
Observed Band :	43kD
Background :	The Fos gene family consists of 4 members: FOS, FOSB, FOSL1, and FOSL2. These genes encode leucine zipper proteins that can dimerize with proteins of the JUN family, thereby forming the transcription factor complex AP-1. As such, the FOS proteins have been implicated as regulators of cell proliferation, differentiation, and transformation. [provided by RefSeq, Jul 2014],
Function :	similarity:Belongs to the bZIP family.,similarity:Belongs to the bZIP family. Fos subfamily.,similarity:Contains 1 bZIP domain.,subunit:Heterodimer.,
Subcellular Location :	Nucleus .
Expression :	Endothelial cell,Epithelium,Lung,
Sort :	6217
No4 :	1
Host :	Rabbit
Modifications :	Unmodified

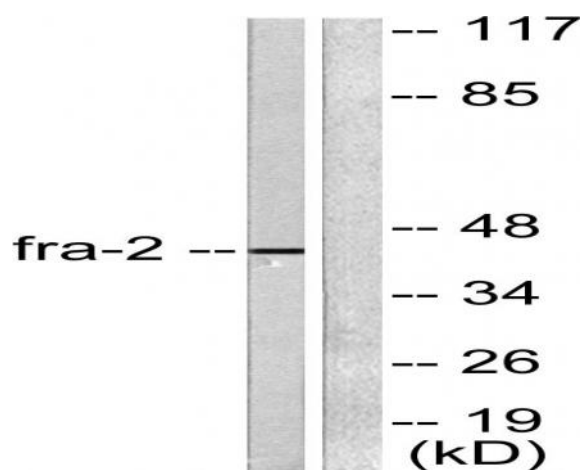
Products Images



Chromatin accessibility uncovers KRAS-driven FOSL2 promoting pancreatic ductal adenocarcinoma progression through up-regulation of CCL28. Chuanxin Wang Mouse 1:50 pancreas tissue



Immunohistochemistry analysis of paraffin-embedded human breast carcinoma tissue, using Fra-2 Antibody. The picture on the right is blocked with the synthesized peptide.



Western blot analysis of lysates from LOVO cells, using Fra-2 Antibody. The lane on the right is blocked with the synthesized peptide.