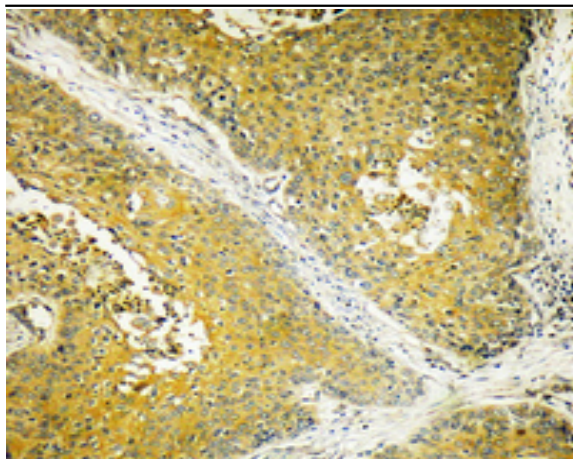


Dynein LC 2 Polyclonal Antibody

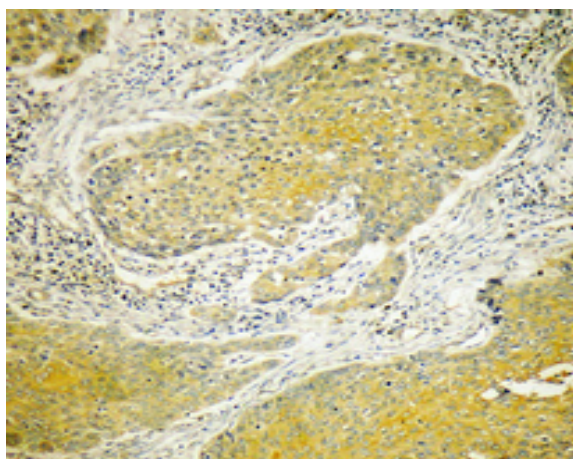
Catalog No :	YT1432
Reactivity :	Human;Mouse;Rat
Applications :	IHC;IF;ELISA
Target :	Dynein LC 2
Fields :	>>Vasopressin-regulated water reabsorption;>>Salmonella infection
Gene Name :	DYNLL2
Protein Name :	Dynein light chain 2 cytoplasmic
Human Gene Id :	140735
Human Swiss Prot No :	Q96FJ2
Mouse Gene Id :	68097
Mouse Swiss Prot No :	Q9D0M5
Rat Gene Id :	140734
Rat Swiss Prot No :	Q78P75
Immunogen :	The antiserum was produced against synthesized peptide derived from human DYNLL2. AA range:1-50
Specificity :	Dynein LC 2 Polyclonal Antibody detects endogenous levels of Dynein LC 2 protein.
Formulation :	Liquid in PBS containing 50% glycerol, 0.5% BSA and 0.02% sodium azide.
Source :	Polyclonal, Rabbit,IgG
Dilution :	IHC 1:100 - 1:300. ELISA: 1:40000.. IF 1:50-200

Purification :	The antibody was affinity-purified from rabbit antiserum by affinity-chromatography using epitope-specific immunogen.
Concentration :	1 mg/ml
Storage Stability :	-15°C to -25°C/1 year(Do not lower than -25°C)
Molecularweight :	10kD
Background :	function:May be involved in some aspects of dynein-related intracellular transport and motility. May play a role in changing or maintaining the spatial distribution of cytoskeletal structures.,similarity:Belongs to the dynein light chain family.,subunit:Homodimer. Interacts with BMF. Component of the myosin V motor complex as well as the microtubular dynein motor complex. Interacts with rabies virus phosphoprotein.,
Function :	function:May be involved in some aspects of dynein-related intracellular transport and motility. May play a role in changing or maintaining the spatial distribution of cytoskeletal structures.,similarity:Belongs to the dynein light chain family.,subunit:Homodimer. Interacts with BMF. Component of the myosin V motor complex as well as the microtubular dynein motor complex. Interacts with rabies virus phosphoprotein.,
Subcellular Location :	Cytoplasm, cytoskeleton .
Expression :	Lung,
Sort :	5332
No4 :	1
Host :	Rabbit
Modifications :	Unmodified

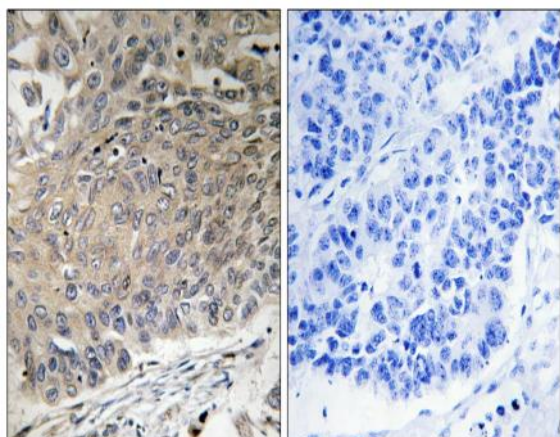
Products Images



Immunohistochemical analysis of paraffin-embedded Human breast cancer. Antibody was diluted at 1:100(4° overnight). High-pressure and temperature Tris-EDTA,pH8.0 was used for antigen retrieval.



Immunohistochemical analysis of paraffin-embedded Human breast cancer. Antibody was diluted at 1:100(4° overnight). High-pressure and temperature Tris-EDTA,pH8.0 was used for antigen retrieval.



Immunohistochemistry analysis of paraffin-embedded human lung carcinoma tissue, using DYNLL2 Antibody. The picture on the right is blocked with the synthesized peptide.