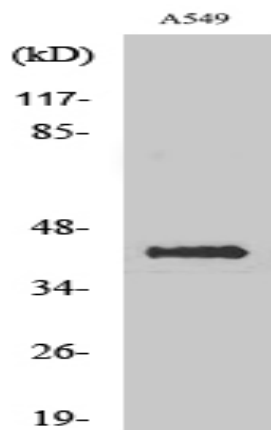


Flotillin-2 Polyclonal Antibody

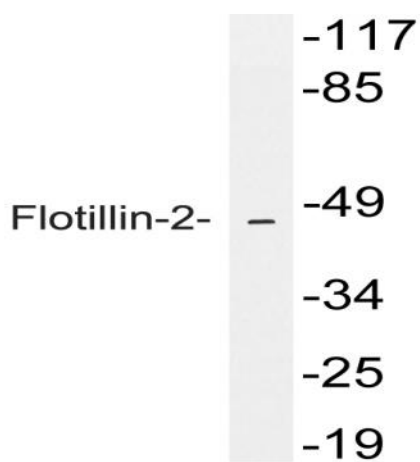
Catalog No :	YT1727
Reactivity :	Human;Mouse;Rat
Applications :	WB;ELISA
Target :	Flotillin-2
Fields :	>>Insulin signaling pathway
Gene Name :	FLOT2
Protein Name :	Flotillin-2
Human Gene Id :	2319
Human Swiss Prot No :	Q14254
Mouse Gene Id :	14252
Mouse Swiss Prot No :	Q60634
Rat Gene Id :	83764
Rat Swiss Prot No :	Q9Z2S9
Immunogen :	The antiserum was produced against synthesized peptide derived from human Flotillin-2. AA range:95-144
Specificity :	Flotillin-2 Polyclonal Antibody detects endogenous levels of Flotillin-2 protein.
Formulation :	Liquid in PBS containing 50% glycerol, 0.5% BSA and 0.02% sodium azide.
Source :	Polyclonal, Rabbit,IgG
Dilution :	WB 1:500 - 1:2000. ELISA: 1:10000. Not yet tested in other applications.

Purification :	The antibody was affinity-purified from rabbit antiserum by affinity-chromatography using epitope-specific immunogen.
Concentration :	1 mg/ml
Storage Stability :	-15°C to -25°C/1 year(Do not lower than -25°C)
Observed Band :	46kD
Cell Pathway :	Insulin_Receptor;
Background :	Caveolae are small domains on the inner cell membrane involved in vesicular trafficking and signal transduction. This gene encodes a caveolae-associated, integral membrane protein, which is thought to function in neuronal signaling. [provided by RefSeq, Jul 2008],
Function :	function:May act as a scaffolding protein within caveolar membranes, functionally participating in formation of caveolae or caveolae-like vesicles. May be involved in epidermal cell adhesion and epidermal structure and function.,similarity:Belongs to the band 7/mec-2 family. Flotillin subfamily.,subcellular location:Membrane-associated protein of caveolae.,subunit:Heterooligomeric complex of flotillin-1 and flotillin-2 and caveolin-1 and caveolin-2.,tissue specificity:In skin, expressed in epidermis and epidermal appendages but not in dermis. Expressed in all layers of the epidermis except the basal layer. In hair follicles, expressed in the suprabasal layer but not the basal layer. Also expressed in melanoma and carcinoma cell lines, fibroblasts and foreskin melanocytes.,
Subcellular Location :	Cell membrane ; Peripheral membrane protein . Membrane, caveola ; Peripheral membrane protein . Endosome . Membrane ; Lipid-anchor . Membrane-associated protein of caveolae.
Expression :	In skin, expressed in epidermis and epidermal appendages but not in dermis. Expressed in all layers of the epidermis except the basal layer. In hair follicles, expressed in the suprabasal layer but not the basal layer. Also expressed in melanoma and carcinoma cell lines, fibroblasts and foreskin melanocytes.
Sort :	6178
No4 :	1
Host :	Rabbit
Modifications :	Unmodified

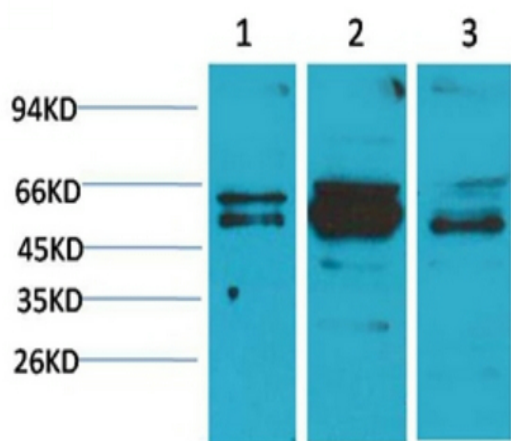
Products Images



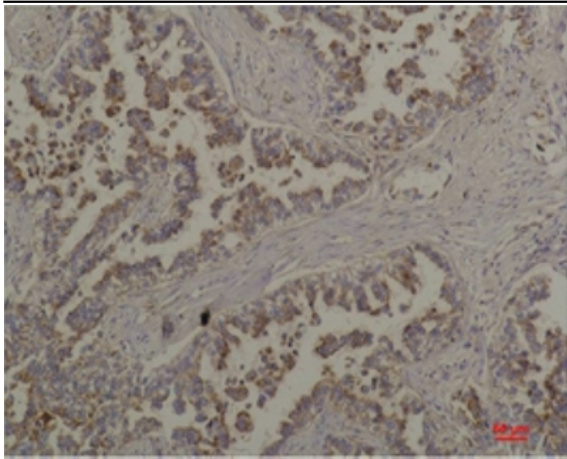
Western Blot analysis of various cells using Flotillin-2 Polyclonal Antibody



Western blot analysis of lysate from A549 cells, using Flotillin-2 antibody.



Western blot analysis of 1) A431, 2) Mouse Brain Tissue, 3) Rat Brain Tissue with Flotillin-2 Rabbit pAb diluted at 1:2,000.



Immunohistochemical analysis of paraffin-embedded Human Lung Carcinoma using Flotillin-2 Rabbit pAb diluted at 1:200