

FAST Polyclonal Antibody

Catalog No :	YT1678
Reactivity :	Human;Mouse;Rat
Applications :	WB;ELISA
Target :	FAST
Gene Name :	FASTK
Protein Name :	Fas-activated serine/threonine kinase
Human Gene Id :	10922
Human Swiss Prot No :	Q14296
Mouse Swiss Prot No :	Q9JIX9
Immunogen :	The antiserum was produced against synthesized peptide derived from human FAST. AA range:361-410
Specificity :	FAST Polyclonal Antibody detects endogenous levels of FAST protein.
Formulation :	Liquid in PBS containing 50% glycerol, 0.5% BSA and 0.02% sodium azide.
Source :	Polyclonal, Rabbit,IgG
Dilution :	WB 1:500 - 1:2000. ELISA: 1:20000. Not yet tested in other applications.
Purification :	The antibody was affinity-purified from rabbit antiserum by affinity-chromatography using epitope-specific immunogen.
Concentration :	1 mg/ml
Storage Stability :	-15°C to -25°C/1 year(Do not lower than -25°C)
Observed Band :	61kD

Background : The protein encoded by this gene is a member of the serine/threonine protein kinase family. This kinase was shown to be activated rapidly during Fas-mediated apoptosis in Jurkat cells. In response to Fas receptor ligation, it phosphorylates TIA1, an apoptosis-promoting nuclear RNA-binding protein. The encoded protein is a strong inducer of lymphocyte apoptosis. Two transcript variants encoding different isoforms have been found for this gene. Other variants exist, but their full-length natures have not yet been determined. [provided by RefSeq, Jul 2008],

Function : catalytic activity:ATP + [Fas-activated serine/threonine protein] = ADP + [Fas-activated serine/threonine phosphoprotein].,function:Fas-mediated apoptosis is characterized by FASTK-dephosphorylation and TIA-1-phosphorylation. Both are activated and FASTK-mediated TIA-1 activation play a key role in apoptosis.,PTM:Phosphorylated on serine/threonine.,similarity:Belongs to the FAST protein kinase family.,similarity:Contains 1 RAP domain.,subunit:Interacts with TIA-1.,tissue specificity:Expressed in heart, brain, placenta, lung, liver, skeletal muscle, kidney and pancreas.,

Subcellular Location : [Isoform 4]: Mitochondrion matrix . Colocalizes with mitochondrial RNA granules.

Expression : Expressed in heart, brain, placenta, lung, liver, skeletal muscle, kidney and pancreas.

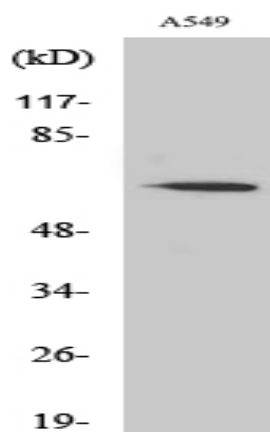
Sort : 5957

No4 : 1

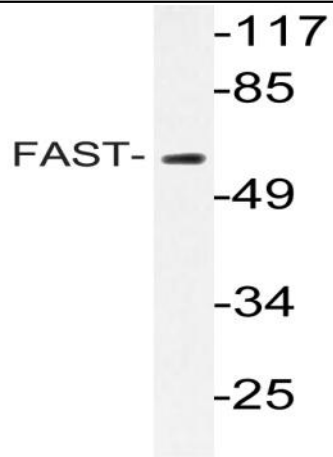
Host : Rabbit

Modifications : Unmodified

Products Images



Western Blot analysis of various cells using FAST Polyclonal Antibody



Western blot analysis of lysate from A549 cells, using FAST antibody.