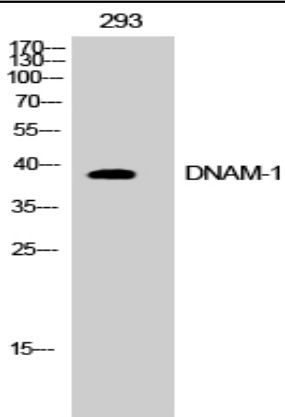


DNAM-1 Polyclonal Antibody

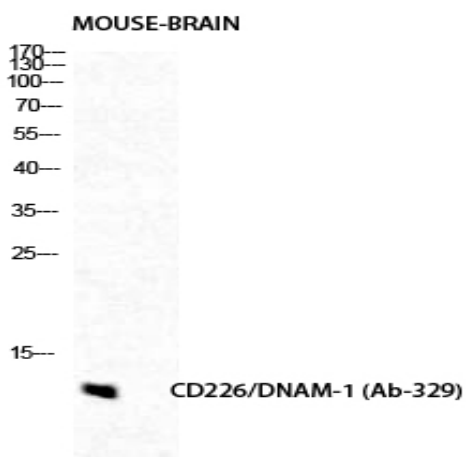
Catalog No :	YT1381
Reactivity :	Human;Mouse;Monkey
Applications :	WB;IHC;IF;ELISA
Target :	DNAM-1
Fields :	>>Cell adhesion molecules
Gene Name :	CD226
Protein Name :	CD226 antigen
Human Gene Id :	10666
Human Swiss Prot No :	Q15762
Mouse Gene Id :	225825
Mouse Swiss Prot No :	Q8K4F0
Immunogen :	The antiserum was produced against synthesized peptide derived from human CD226/DNAM-1. AA range:287-336
Specificity :	DNAM-1 Polyclonal Antibody detects endogenous levels of DNAM-1 protein.
Formulation :	Liquid in PBS containing 50% glycerol, 0.5% BSA and 0.02% sodium azide.
Source :	Polyclonal, Rabbit,IgG
Dilution :	WB 1:500 - 1:2000. IHC 1:100 - 1:300. IF 1:200 - 1:1000. ELISA: 1:20000. Not yet tested in other applications.
Purification :	The antibody was affinity-purified from rabbit antiserum by affinity-chromatography using epitope-specific immunogen.
Concentration :	1 mg/ml

Storage Stability :	-15°C to -25°C/1 year(Do not lower than -25°C)
Observed Band :	38kD
Cell Pathway :	Cell adhesion molecules (CAMs);
Background :	This gene encodes a glycoprotein expressed on the surface of NK cells, platelets, monocytes and a subset of T cells. It is a member of the Ig-superfamily containing 2 Ig-like domains of the V-set. The protein mediates cellular adhesion of platelets and megakaryocytic cells to vascular endothelial cells. The protein also plays a role in megakaryocytic cell maturation. Alternative splicing results in multiple transcript variants. [provided by RefSeq, Jan 2015],
Function :	function:Receptor involved in intercellular adhesion, lymphocyte signaling, cytotoxicity and lymphokine secretion mediated by cytotoxic T-lymphocyte (CTL) and NK cell.,PTM:Phosphorylated.,similarity:Contains 2 Ig-like C2-type (immunoglobulin-like) domains.,subunit:Interacts with PVR and PVRL2.,tissue specificity:Expressed by peripheral blood T-lymphocytes.,
Subcellular Location :	Cell membrane ; Single-pass type I membrane protein .
Expression :	Expressed by peripheral blood T-lymphocytes.
Tag :	orthogonal
Sort :	5191
No4 :	1
Host :	Rabbit
Modifications :	Unmodified

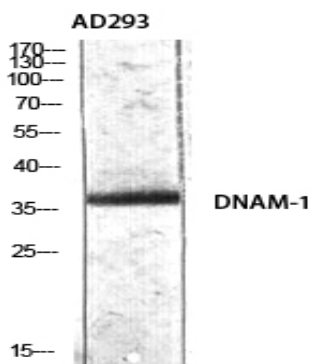
Products Images



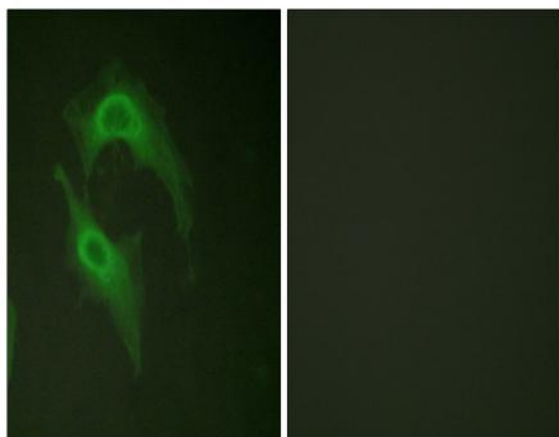
Western Blot analysis of COS7 cells using DNAM-1 Polyclonal Antibody diluted at 1:500



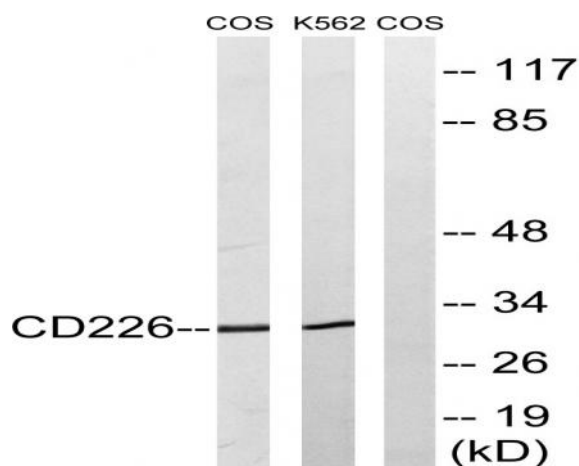
Western Blot analysis of mouse-brain cells using DNAM-1 Polyclonal Antibody diluted at 1:500



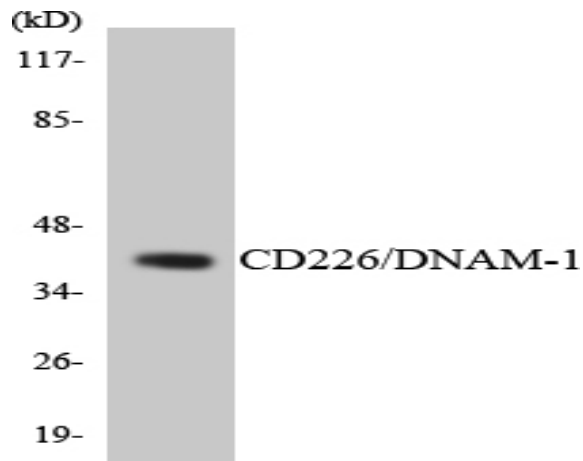
Western Blot analysis of AD293 using DNAM-1 Polyclonal Antibody diluted at 1:500



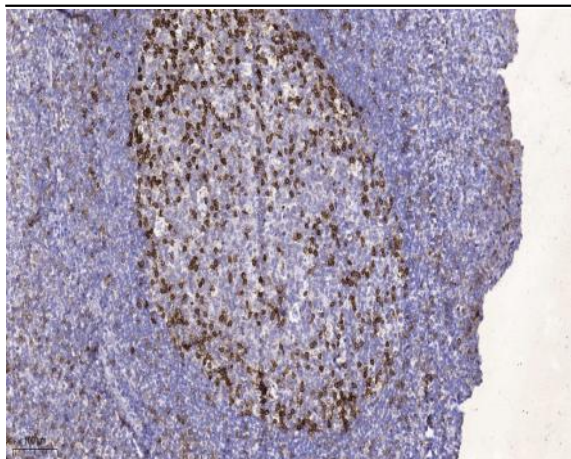
Immunofluorescence analysis of HeLa cells, using CD226/DNAM-1 Antibody. The picture on the right is blocked with the synthesized peptide.



Western blot analysis of lysates from COS7 and K562 cells, treated with PMA 125ng/ml 30', using CD226/DNAM-1 Antibody. The lane on the right is blocked with the synthesized peptide.



Western blot analysis of the lysates from HUVEC cells using CD226/DNAM-1 antibody.



Immunohistochemical analysis of paraffin-embedded human tonsil. 1, Antibody was diluted at 1:200(4° overnight). 2, Tris-EDTA,pH9.0 was used for antigen retrieval. 3,Secondary antibody was diluted at 1:200(room temperature, 45min).