

FAM35A/B Polyclonal Antibody

Catalog No :	YT1670
Reactivity :	Human;Rat;Mouse;
Applications :	WB;ELISA
Target :	FAM35A/B
Gene Name :	FAM35A/FAM35B
Protein Name :	Protein FAM35A/B
Human Gene Id :	54537
Human Swiss Prot No :	Q86V20/A6NDK8
Immunogen :	The antiserum was produced against synthesized peptide derived from human FAM35A/B. AA range:394-443
Specificity :	FAM35A/B Polyclonal Antibody detects endogenous levels of FAM35A/B protein.
Formulation :	Liquid in PBS containing 50% glycerol, 0.5% BSA and 0.02% sodium azide.
Source :	Polyclonal, Rabbit,IgG
Dilution :	WB 1:500 - 1:2000. ELISA: 1:10000. Not yet tested in other applications.
Purification :	The antibody was affinity-purified from rabbit antiserum by affinity-chromatography using epitope-specific immunogen.
Concentration :	1 mg/ml
Storage Stability :	-15°C to -25°C/1 year(Do not lower than -25°C)
Observed Band :	95kD
Background :	PTM:Phosphorylated upon DNA damage, probably by ATM or

ATR.,similarity:Belongs to the FAM35 family.,

Function :

PTM:Phosphorylated upon DNA damage, probably by ATM or ATR.,similarity:Belongs to the FAM35 family.,

Subcellular Location :

Nucleus . Chromosome . Localizes to nuclear foci in response to DNA damage. .

Expression :

Brain,Eye,

Sort :

5932

No4 :

1

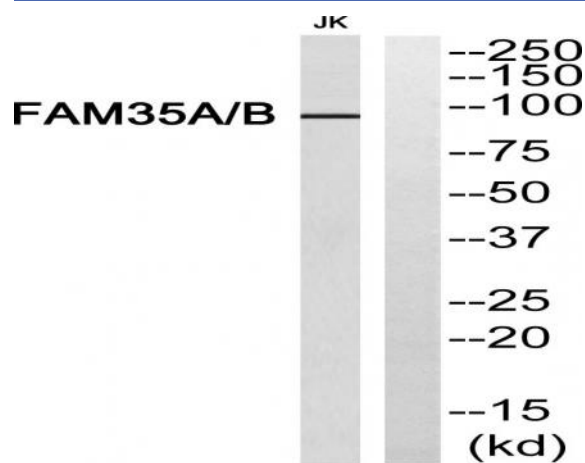
Host :

Rabbit

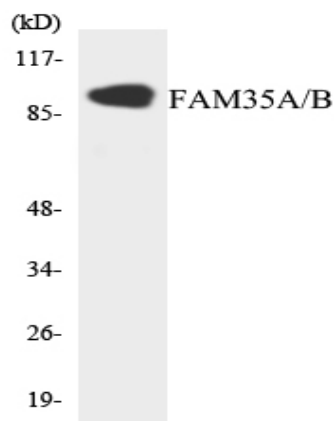
Modifications :

Unmodified

Products Images



Western blot analysis of FAM35A/B Antibody. The lane on the right is blocked with the FAM35A/B peptide.



Western blot analysis of the lysates from 293 cells using FAM35A/B antibody.