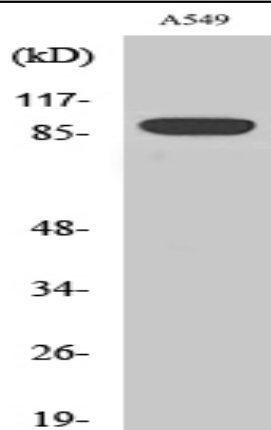


Exo1 Polyclonal Antibody

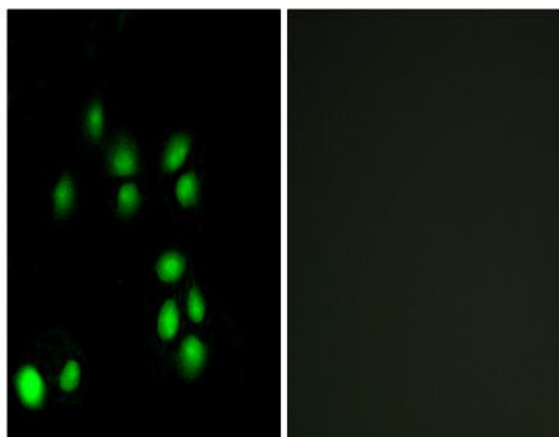
Catalog No :	YT1646
Reactivity :	Human;Mouse
Applications :	WB;IF;ELISA
Target :	Exo1
Fields :	>>Mismatch repair
Gene Name :	EXO1
Protein Name :	Exonuclease 1
Human Gene Id :	9156
Human Swiss Prot No :	Q9UQ84
Mouse Gene Id :	26909
Mouse Swiss Prot No :	Q9QZ11
Immunogen :	The antiserum was produced against synthesized peptide derived from human EXO1. AA range:61-110
Specificity :	Exo1 Polyclonal Antibody detects endogenous levels of Exo1 protein.
Formulation :	Liquid in PBS containing 50% glycerol, 0.5% BSA and 0.02% sodium azide.
Source :	Polyclonal, Rabbit,IgG
Dilution :	WB 1:500 - 1:2000. IF 1:200 - 1:1000. ELISA: 1:10000. Not yet tested in other applications.
Purification :	The antibody was affinity-purified from rabbit antiserum by affinity-chromatography using epitope-specific immunogen.
Concentration :	1 mg/ml

Storage Stability :	-15°C to -25°C/1 year(Do not lower than -25°C)
Observed Band :	94kD
Cell Pathway :	Mismatch repair;
Background :	This gene encodes a protein with 5' to 3' exonuclease activity as well as an RNase H activity. It is similar to the <i>Saccharomyces cerevisiae</i> protein Exo1 which interacts with Msh2 and which is involved in mismatch repair and recombination. Alternative splicing of this gene results in three transcript variants encoding two different isoforms. [provided by RefSeq, Jul 2008],
Function :	cofactor: Binds 2 magnesium ions per subunit. They probably participate in the reaction catalyzed by the enzyme. May bind an additional third magnesium ion after substrate binding., developmental stage: Highly expressed in fetal liver and at lower levels in fetal brain, heart, kidney, spleen and thymus., function: 5'→3' double-stranded DNA exonuclease which may also possess a cryptic 3'→5' double-stranded DNA exonuclease activity. Functions in DNA mismatch repair (MMR) to excise mismatch-containing DNA tracts directed by strand breaks located either 5' or 3' to the mismatch. Also exhibits endonuclease activity against 5'-overhanging flap structures similar to those generated by displacement synthesis when DNA polymerase encounters the 5'-end of a downstream Okazaki fragment. Required for somatic hypermutation (SHM) and class switch recombination (CSR) of immunoglobulin genes. Essential for
Subcellular Location :	Nucleus . Colocalizes with PCNA to discrete nuclear foci in S-phase.
Expression :	Highly expressed in bone marrow, testis and thymus. Expressed at lower levels in colon, lymph nodes, ovary, placenta, prostate, small intestine, spleen and stomach.
Tag :	orthogonal
Sort :	823
No4 :	1
Host :	Rabbit
Modifications :	Unmodified

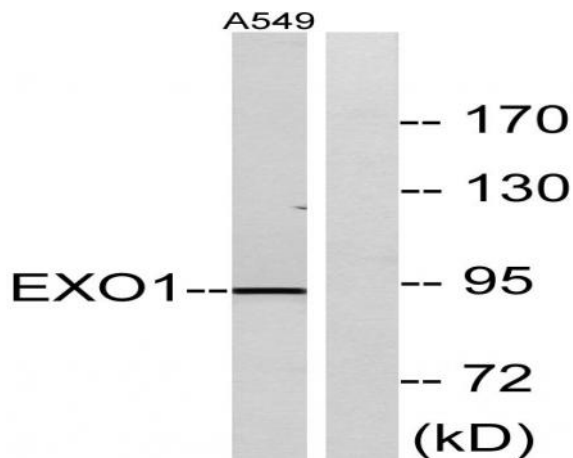
Products Images



Western Blot analysis of various cells using Exo1 Polyclonal Antibody cells nucleus extracted by Minute TM Cytoplasmic and Nuclear Fractionation kit (SC-003, Inventbiotech, MN, USA).



Immunofluorescence analysis of A549 cells, using EXO1 Antibody. The picture on the right is blocked with the synthesized peptide.



Western blot analysis of lysates from A549 cells, using EXO1 Antibody. The lane on the right is blocked with the synthesized peptide.