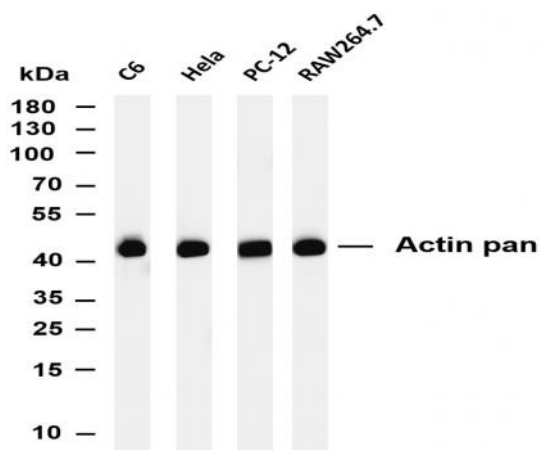


Actin pan (PT0145R) rabbit mAb

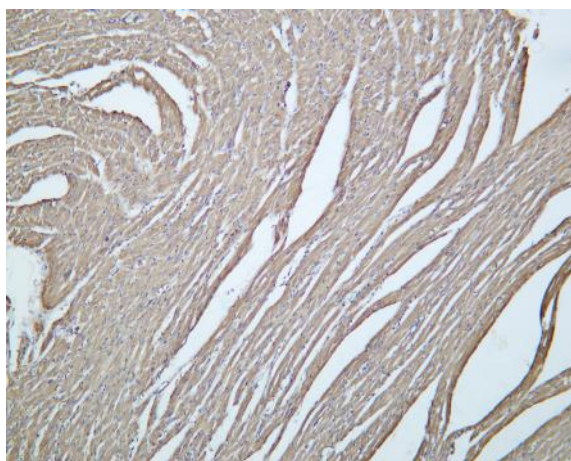
Catalog No :	YM8082
Reactivity :	Human; Mouse; Rat;
Applications :	WB;IHC;IF;IP;ELISA
Target :	Actin skeletal muscle α
Gene Name :	Actin-pan
Protein Name :	Actin pan
Human Gene Id :	58
Human Swiss Prot No :	P62736/P68032/P60709/P63261/P68133/P63267
Mouse Gene Id :	11459
Mouse Swiss Prot No :	P68134
Rat Gene Id :	29437
Rat Swiss Prot No :	P68136
Specificity :	endogenous
Formulation :	PBS, 50% glycerol, 0.05% Proclin 300, 0.05%BSA
Source :	Monoclonal, rabbit, IgG, Kappa
Dilution :	IHC 1:200-1000,WB 1:1000-5000,IF 1:200-1000,ELISA 1:5000-20000,IP 1:50-200
Purification :	Protein A
Storage Stability :	-15°C to -25°C/1 year(Do not lower than -25°C)

Molecularweight :	42kD
Observed Band :	42kD
Background :	This gene encodes one of six different actin proteins. Actins are highly conserved proteins that are involved in cell motility, structure, and integrity. This actin is a major constituent of the contractile apparatus and one of the two nonmuscle cytoskeletal actins. [provided by RefSeq, Jul 2008],
Function :	disease:Defects in ACTB are a cause of dystonia juvenile-onset (DYTJ) [MIM:607371]. DYTJ is a form of dystonia with juvenile onset. Dystonia is defined by the presence of sustained involuntary muscle contraction, often leading to abnormal postures. DYTJ patients manifest progressive, generalized, dopa-unresponsive dystonia, developmental malformations and sensory hearing loss.,function:Actins are highly conserved proteins that are involved in various types of cell motility and are ubiquitously expressed in all eukaryotic cells.,miscellaneous:In vertebrates 3 main groups of actin isoforms, alpha, beta and gamma have been identified. The alpha actins are found in muscle tissues and are a major constituent of the contractile apparatus. The beta and gamma actins coexist in most cell types as components of the cytoskeleton and as mediators of internal cell motility.,similarity:Belongs to the
Subcellular Location :	Cytoplasmic, Membranous
Expression :	B-cell lymphoma,Brain,Cajal-Retzius cell,Eye,Fetal brain cortex,Foreskin,Hepatocellular car
Tag :	hot,recombinant
Sort :	24804
No4 :	1
Host :	Rabbit
Modifications :	Unmodified

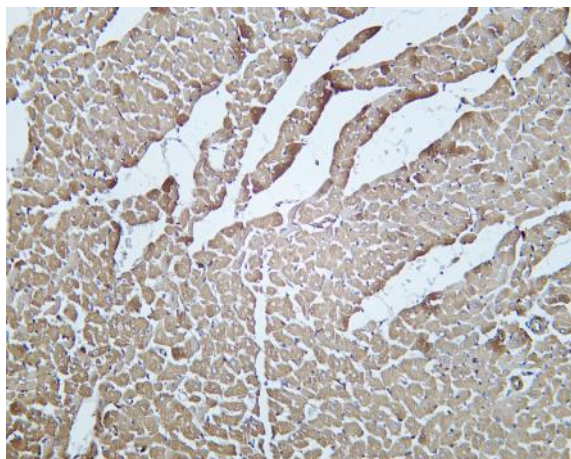
Products Images



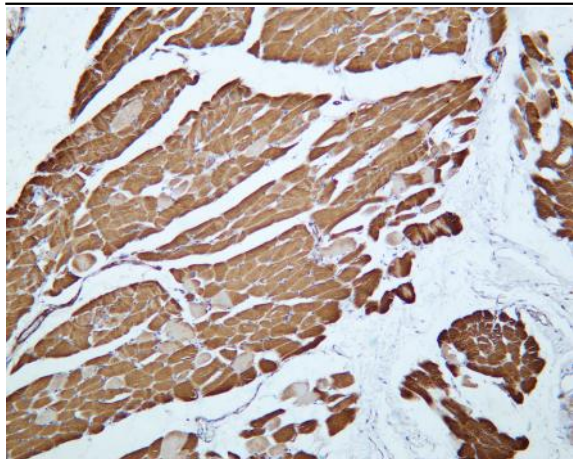
Various whole cell lysates were separated by 4-20% SDS-PAGE, and the membrane was blotted with anti-Actin pan(PT0145R) antibody. The HRP-conjugated Goat anti-Rabbit IgG(H + L) antibody was used to detect the antibody. Lane 1: C6 Lane 2: HeLa Lane 3: PC-12 Lane 4: RAW264.7 Predicted band size: 42kDa Observed band size: 42kDa



Mouse heart was stained with Anti-Actin pan (PT0145R) rabbit antibody



Rat heart was stained with Anti-Actin pan (PT0145R) rabbit antibody



Human skeletal muscle was stained with Anti-Actin pan (PT0145R) rabbit antibody