

DHRS11 Polyclonal Antibody

Catalog No :	YT1347
Reactivity :	Human;Mouse
Applications :	IHC;IF;WB;ELISA
Target :	DHRS11
Fields :	>>Steroid hormone biosynthesis
Gene Name :	DHRS11
Protein Name :	Dehydrogenase/reductase SDR family member 11
Human Gene Id :	79154
Human Swiss Prot No :	Q6UWP2
Mouse Gene Id :	192970
Mouse Swiss Prot No :	Q3U0B3
Immunogen :	The antiserum was produced against synthesized peptide derived from human DHRS11. AA range:111-160
Specificity :	DHRS11 Polyclonal Antibody detects endogenous levels of DHRS11 protein.
Formulation :	Liquid in PBS containing 50% glycerol, 0.5% BSA and 0.02% sodium azide.
Source :	Polyclonal, Rabbit,IgG
Dilution :	WB 1:500-2000 IHC 1:100 - 1:300. ELISA: 1:20000.. IF 1:50-200
Purification :	The antibody was affinity-purified from rabbit antiserum by affinity-chromatography using epitope-specific immunogen.
Concentration :	1 mg/ml

Storage Stability : -15°C to -25°C/1 year(Do not lower than -25°C)

Molecularweight : 28kD

Background : similarity:Belongs to the short-chain dehydrogenases/reductases (SDR) family.,subunit:Homotetramer.,

Function : similarity:Belongs to the short-chain dehydrogenases/reductases (SDR) family.,subunit:Homotetramer.,

Subcellular Location : Secreted .

Expression : Isoform 1: Ubiquitously expressed, with highest levels in testis, small intestine, colon, kidney, brain and heart. Isoform 3: Expressed in brain, heart and skeletal muscle.

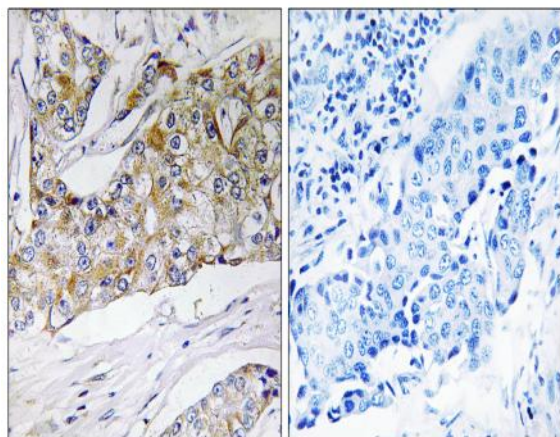
Sort : 5132

No4 : 1

Host : Rabbit

Modifications : Unmodified

Products Images



Immunohistochemistry analysis of paraffin-embedded human breast carcinoma tissue, using DHRS11 Antibody. The picture on the right is blocked with the synthesized peptide.