

DHRS1 Polyclonal Antibody

Catalog No :	YT1346
Reactivity :	Human;Mouse;Rat
Applications :	IHC;IF;ELISA
Target :	DHRS1
Gene Name :	DHRS1
Protein Name :	Dehydrogenase/reductase SDR family member 1
Human Gene Id :	115817
Human Swiss Prot No :	Q96LJ7
Mouse Gene Id :	52585
Mouse Swiss Prot No :	Q99L04
Immunogen :	Synthesized peptide derived from the Internal region of human DHRS1.
Specificity :	DHRS1 Polyclonal Antibody detects endogenous levels of DHRS1 protein.
Formulation :	Liquid in PBS containing 50% glycerol, 0.5% BSA and 0.02% sodium azide.
Source :	Polyclonal, Rabbit,IgG
Dilution :	IHC 1:100 - 1:300. ELISA: 1:20000.. IF 1:50-200
Purification :	The antibody was affinity-purified from rabbit antiserum by affinity-chromatography using epitope-specific immunogen.
Concentration :	1 mg/ml
Storage Stability :	-15°C to -25°C/1 year(Do not lower than -25°C)

Molecularweight : 34kD

Background : This gene encodes a member of the short-chain dehydrogenases/reductases (SDR) family. The encoded enzyme contains a conserved catalytic domain and likely functions as an oxidoreductase. Multiple alternatively spliced variants, encoding the same protein, have been identified. [provided by RefSeq, Nov 2008],

Function : similarity:Belongs to the short-chain dehydrogenases/reductases (SDR) family.,tissue specificity:Detected in heart and liver, and at low levels in skeletal muscle, kidney and pancreas.,

Subcellular Location : Endoplasmic reticulum . May be attached to the ER membrane by its C-terminus segment. .

Expression : Detected in heart, liver, adrenal glands, and at low levels in skeletal muscle, kidney, pancreas and brain.

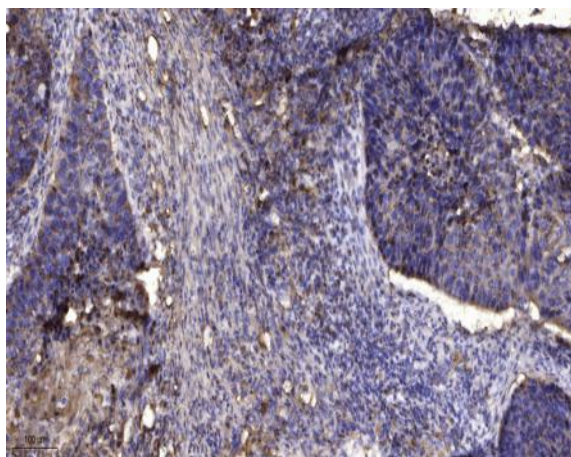
Sort : 5131

No4 : 1

Host : Rabbit

Modifications : Unmodified

Products Images



Immunohistochemical analysis of paraffin-embedded human Squamous cell carcinoma of lung. 1, Antibody was diluted at 1:200(4° overnight). 2, Tris-EDTA,pH9.0 was used for antigen retrieval. 3,Secondary antibody was diluted at 1:200(room temperature, 45min).