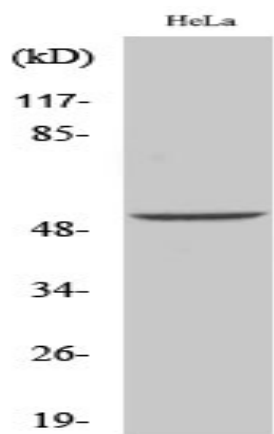


## Desmin Polyclonal Antibody

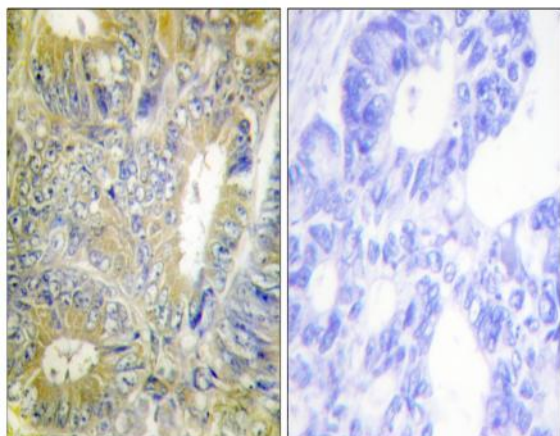
<b>Catalog No :</b>	YT1327
<b>Reactivity :</b>	Human;Mouse;Rat
<b>Applications :</b>	WB;IHC;IF;ELISA
<b>Target :</b>	Desmin
<b>Fields :</b>	>>Hypertrophic cardiomyopathy;>>Arrhythmogenic right ventricular cardiomyopathy;>>Dilated cardiomyopathy
<b>Gene Name :</b>	DES
<b>Protein Name :</b>	Desmin
<b>Human Gene Id :</b>	1674
<b>Human Swiss Prot No :</b>	P17661
<b>Mouse Gene Id :</b>	13346
<b>Mouse Swiss Prot No :</b>	P31001
<b>Rat Gene Id :</b>	64362
<b>Rat Swiss Prot No :</b>	P48675
<b>Immunogen :</b>	The antiserum was produced against synthesized peptide derived from human Desmin. AA range:26-75
<b>Specificity :</b>	Desmin Polyclonal Antibody detects endogenous levels of Desmin protein.
<b>Formulation :</b>	Liquid in PBS containing 50% glycerol, 0.5% BSA and 0.02% sodium azide.
<b>Source :</b>	Polyclonal, Rabbit,IgG
<b>Dilution :</b>	WB 1:500 - 1:2000. IHC 1:100 - 1:300. ELISA: 1:20000.. IF 1:50-200

<b>Purification :</b>	The antibody was affinity-purified from rabbit antiserum by affinity-chromatography using epitope-specific immunogen.
<b>Concentration :</b>	1 mg/ml
<b>Storage Stability :</b>	-15°C to -25°C/1 year(Do not lower than -25°C)
<b>Observed Band :</b>	54kD
<b>Cell Pathway :</b>	Hypertrophic cardiomyopathy (HCM);Arrhythmogenic right ventricular cardiomyopathy (ARVC);Dilated cardiomyopathy;
<b>Background :</b>	This gene encodes a muscle-specific class III intermediate filament. Homopolymers of this protein form a stable intracytoplasmic filamentous network connecting myofibrils to each other and to the plasma membrane. Mutations in this gene are associated with desmin-related myopathy, a familial cardiac and skeletal myopathy (CSM), and with distal myopathies. [provided by RefSeq, Jul 2008],
<b>Function :</b>	disease:Defects in DES are the cause of cardiomyopathy dilated type 11 (CMD11) [MIM:604765]. Dilated cardiomyopathy is a disorder characterized by ventricular dilation and impaired systolic function, resulting in congestive heart failure and arrhythmia. Patients are at risk of premature death.,disease:Defects in DES are the cause of desmin-related cardio-skeletal myopathy (CSM) [MIM:601419]; also known as desmin-related myopathy (DRM). CSM is characterized by skeletal muscle weakness associated with cardiac conduction blocks, arrhythmias, restrictive heart failure, and by intracytoplasmic accumulation of desmin-reactive deposits in cardiac and skeletal muscle cells. A desmin-related myopathy can have a distal onset, it is then known as hereditary distal myopathy (HDM).,disease:Defects in DES are the cause of neurogenic scapuloperoneal syndrome Kaeser type (Kaeser syndrome) [MIM:181400].
<b>Subcellular Location :</b>	Cytoplasmic
<b>Expression :</b>	Muscle,Skeletal muscle,
<b>Sort :</b>	5098
<b>No4 :</b>	1
<b>Host :</b>	Rabbit
<b>Modifications :</b>	Unmodified

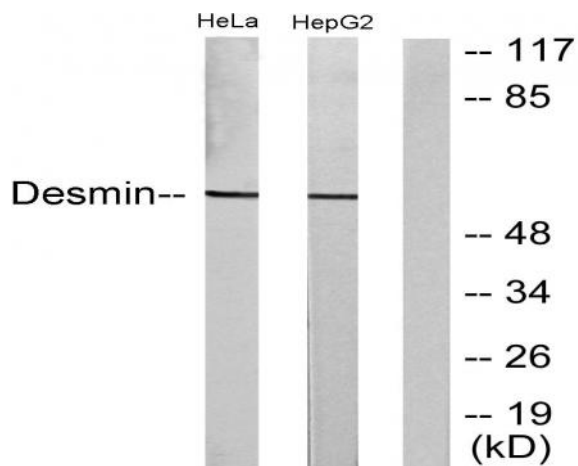
## Products Images



Western Blot analysis of various cells using Desmin Polyclonal Antibody



Immunohistochemistry analysis of paraffin-embedded human colon carcinoma tissue, using Desmin Antibody. The picture on the right is blocked with the synthesized peptide.



Western blot analysis of lysates from HeLa and HepG2 cells, using Desmin Antibody. The lane on the right is blocked with the synthesized peptide.