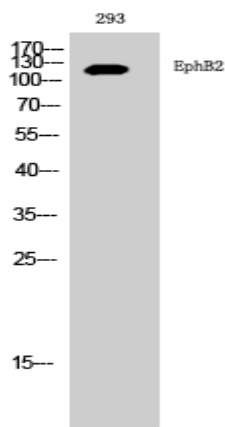


EphB2 Polyclonal Antibody

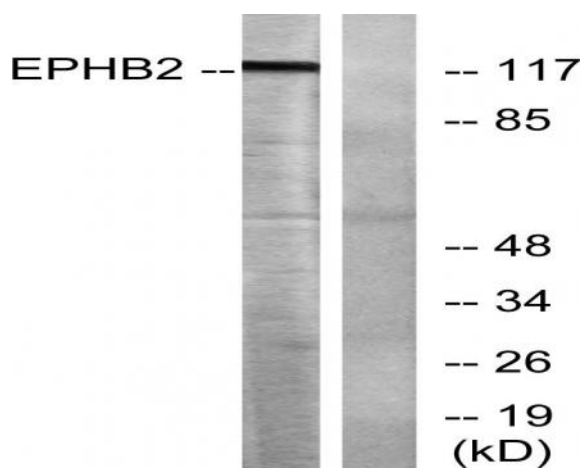
Catalog No :	YT1586
Reactivity :	Human;Rat;Mouse;
Applications :	WB;IHC;IF;ELISA
Target :	EphB2
Fields :	>>Axon guidance
Gene Name :	EPHB2
Protein Name :	Ephrin type-B receptor 2
Human Gene Id :	2048
Human Swiss Prot No :	P29323
Mouse Swiss Prot No :	P54763
Immunogen :	The antiserum was produced against synthesized peptide derived from human EPHB2. AA range:991-1040
Specificity :	EphB2 Polyclonal Antibody detects endogenous levels of EphB2 protein.
Formulation :	Liquid in PBS containing 50% glycerol, 0.5% BSA and 0.02% sodium azide.
Source :	Polyclonal, Rabbit,IgG
Dilution :	WB 1:500 - 1:2000. IHC 1:100 - 1:300. ELISA: 1:5000.. IF 1:50-200
Purification :	The antibody was affinity-purified from rabbit antiserum by affinity-chromatography using epitope-specific immunogen.
Concentration :	1 mg/ml
Storage Stability :	-15°C to -25°C/1 year(Do not lower than -25°C)

Observed Band :	117kD
Cell Pathway :	Axon guidance;
Background :	<p>This gene encodes a member of the Eph receptor family of receptor tyrosine kinase transmembrane glycoproteins. These receptors are composed of an N-terminal glycosylated ligand-binding domain, a transmembrane region and an intracellular kinase domain. They bind ligands called ephrins and are involved in diverse cellular processes including motility, division, and differentiation. A distinguishing characteristic of Eph-ephrin signaling is that both receptors and ligands are competent to transduce a signaling cascade, resulting in bidirectional signaling. This protein belongs to a subgroup of the Eph receptors called EphB. Proteins of this subgroup are distinguished from other members of the family by sequence homology and preferential binding affinity for membrane-bound ephrin-B ligands. Allelic variants are associated with prostate and brain cancer susceptibility. Alternative splicing results in multiple tr</p>
Function :	<p>catalytic activity:ATP + a [protein]-L-tyrosine = ADP + a [protein]-L-tyrosine phosphate.,disease:Defects in EPHB2 are involved in the development of prostate cancer metastasis to the brain [MIM:603688].,disease:Defects in EPHB2 are involved in the progression of prostate cancer [MIM:176807].,function:Receptor for members of the ephrin-B family. Acts as a tumor suppressor.,similarity:Belongs to the protein kinase superfamily. Tyr protein kinase family.,similarity:Belongs to the protein kinase superfamily. Tyr protein kinase family. Ephrin receptor subfamily.,similarity:Contains 1 protein kinase domain.,similarity:Contains 1 SAM (sterile alpha motif) domain.,similarity:Contains 2 fibronectin type-III domains.,subunit:The ligand-activated form interacts with multiple proteins, including GTPase-activating protein (RASGAP) through its SH2 domain. Binds RASGAP through the juxtamembrane tyrosi</p>
Subcellular Location :	Cell membrane; Single-pass type I membrane protein. Cell projection, axon . Cell projection, dendrite .
Expression :	Brain, heart, lung, kidney, placenta, pancreas, liver and skeletal muscle. Preferentially expressed in fetal brain.
Sort :	5647
No4 :	1
Host :	Rabbit
Modifications :	Unmodified

Products Images



Western Blot analysis of 293 cells using EphB2 Polyclonal Antibody diluted at 1:1000



Western blot analysis of lysates from Jurkat cells, using EPHB2 Antibody. The lane on the right is blocked with the synthesized peptide.